

(KER4.KER) 24081
KERMIT FOUR DEPARTURE

AL-6081 (FAA)

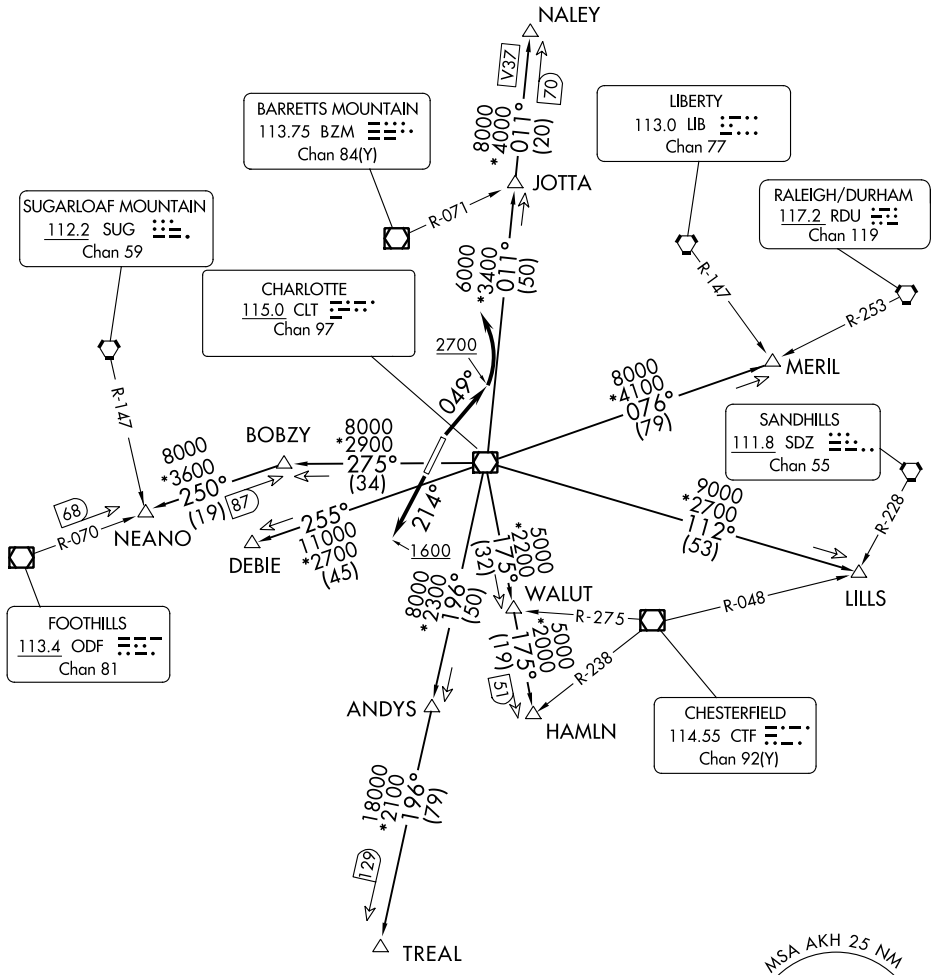
GASTONIA MUNI (AKH)
 GASTONIA, NORTH CAROLINA

CHARLOTTE DEP CON
 120.05 257.2
 ASOS
 135.725
 CLNC DEL
 127.2
 UNICOM
 123.0

RADAR and DME required.

**TOP ALTITUDE:
 3000**

TAKEOFF MINIMUMS
 Rwy 3, 21: Standard.



SE-2, 11 JUL 2024 to 08 AUG 2024

SE-2, 11 JUL 2024 to 08 AUG 2024

NOTE: For turbo jet aircraft only.
 NOTE: Upon reaching 10000 MSL, accelerate to and maintain 280K, if unable advise ATC.
 NOTE: Transponder code will be issued via Charlotte clearance delivery.

(CONTINUED ON FOLLOWING PAGE)

KERMIT FOUR DEPARTURE
 (KER4.KER) 21MAR24

GASTONIA, NORTH CAROLINA
 GASTONIA MUNI (AKH)

KERMIT FOUR DEPARTURE



DEPARTURE ROUTE DESCRIPTION

TAKEOFF RUNWAY 3: Climb on heading 049° to 2700, before turning left, thence

TAKEOFF RUNWAY 21: Climb on heading 214° to 1600 before proceeding north, thence

. . . . on RADAR vectors to intercept filed/assigned transition or enroute fix/navaid. Maintain 3000, expect filed altitude/flight level 10 minutes after departure.

ANDYS TRANSITION (KER4.ANDYS): From over CLT VOR/DME on CLT R-196 to ANDYS.

DEBIE TRANSITION (KER4.DEBIE): From over CLT VOR/DME on CLT R-255 to DEBIE.

HAMLN TRANSITION (KER4.HAMLN): From over CLT VOR/DME on CLT R-175 to HAMLN.

JOTTA TRANSITION (KER4.JOTTA): From over CLT VOR/DME on CLT R-011 to JOTTA.

LILLS TRANSITION (KER4.LILLS): From over CLT VOR/DME on CLT R-112 to LILLS.

MERIL TRANSITION (KER4.MERIL): From over CLT VOR/DME on CLT R-076 to MERIL.

NALEY TRANSITION (KER4.NALEY): From over CLT VOR/DME on CLT R-011 to NALEY.

NEANO TRANSITION (KER4.NEANO): From over CLT VOR/DME on CLT R-275 to BOBZY, then on ODF R-070 to NEANO.

TREAL TRANSITION (KER4.TREAL): From over CLT VOR/DME on CLT R-196 to TREAL.

SE-2, 11 JUL 2024 to 08 AUG 2024

SE-2, 11 JUL 2024 to 08 AUG 2024