

(KRITR6.KRITR) 24081

KRITR SIX DEPARTURE (RNAV) AL-6081 (FAA)

GASTONIA MUNI (AKH)
GASTONIA, NORTH CAROLINA

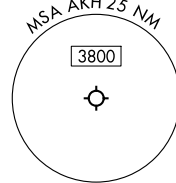
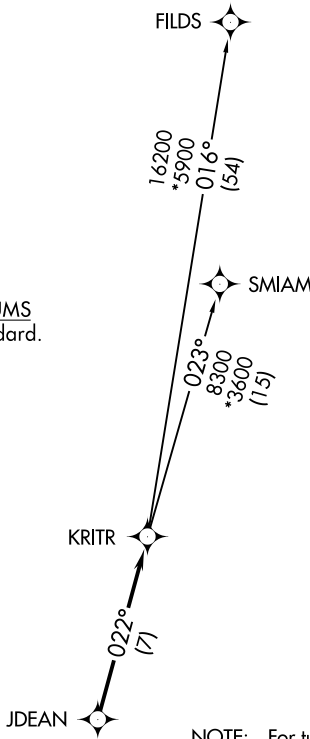
CHARLOTTE DEP CON
120.05 257.2
ASOS
135.725
CLNC DEL
127.2
UNICOM
123.0 (CTAF)

**TOP ALTITUDE:
3000**

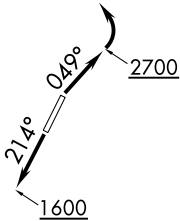
RNAV 1 - DME/DME/IRU or GPS.

RADAR required.

TAKEOFF MINIMUMS
Rwys 3, 21: Standard.



- NOTE: For turbo jets only.
- NOTE: Transponder code will be issued via PDC or Charlotte CLNC DEL.
- NOTE: If unable to accept climb rates, advise ATC on initial contact.
- NOTE: Upon reaching 10000 MSL, accelerate to and maintain 280K, if unable advise ATC.



NOTE: Chart not to scale.



DEPARTURE ROUTE DESCRIPTION

TAKEOFF RUNWAY 3: Climb on heading 049° to 2700 before turning left, then on heading assigned by ATC, thence. . . .

TAKEOFF RUNWAY 21: Climb on heading 214° to 1600 before proceeding north, then on heading by ATC, thence. . . .

. . . .on RADAR vectors to JDEAN, then on track 022° to KRITR, then on assigned transition. Maintain 3000. Expect clearance to filed altitude within 10 minutes after departure.

FILDS TRANSITION (KRITR6.FILDS)
SMIAM TRANSITION (KRITR6.SMIAM)

KRITR SIX DEPARTURE (RNAV)

(KRITR6.KRITR) 21MAR24

GASTONIA, NORTH CAROLINA
GASTONIA MUNI (AKH)

SE-2, 11 JUL 2024 to 08 AUG 2024

SE-2, 11 JUL 2024 to 08 AUG 2024