

VOR/DME MCW <b>114.9</b> Chan <b>96</b>	APP CRS <b>297°</b>	Rwy Idg TDZE Apt Elev <b>N/A</b> <b>N/A</b> <b>1229</b>
---	------------------------	--

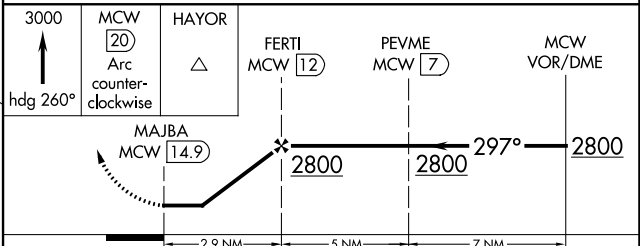
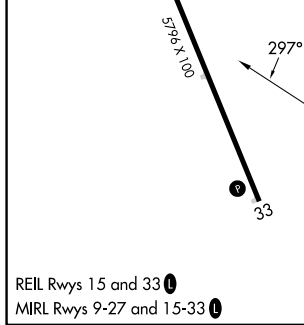
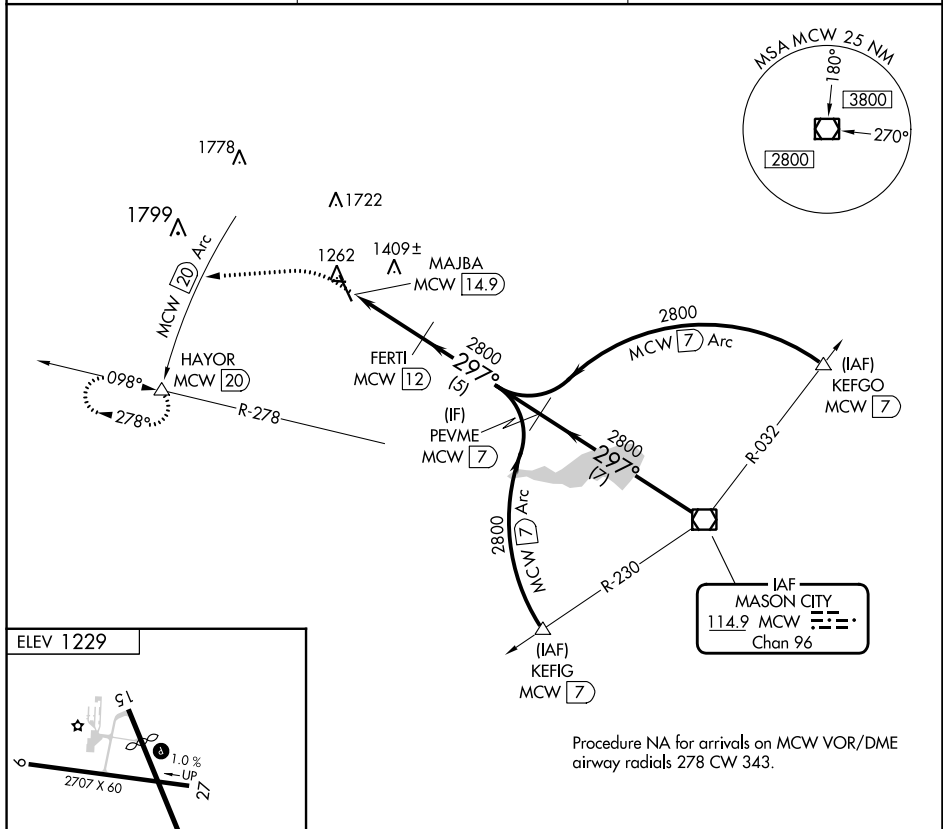
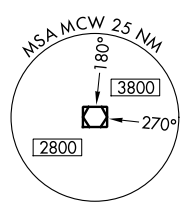
**VOR-A**  
FOREST CITY MUNI (FXY)

**DME required.**

**▼** When local altimeter setting not received use Mason City altimeter setting and increase all MDA 40 feet.  
**▲** Circling to Rwy 9, 27 33 NA at night.

**MISSED APPROACH:** Climb to 3000 on heading 260° to MCW 20 DME Arc and on MCW 20 DME Arc counterclockwise to HAYOR/20 DME and hold.

AWOS-3 <b>123.925</b>	MINNEAPOLIS CENTER <b>127.3 257.675</b>	UNICOM <b>122.8 (CTAF) 1</b>
--------------------------	--	---------------------------------



CATEGORY	A	B	C	D
<b>C</b> CIRCLING	1680-1 451 (500-1)	1760-1 531 (600-1)	NA	

NC-3, 11 JUL 2024 to 08 AUG 2024

NC-3, 11 JUL 2024 to 08 AUG 2024