

WAAS CH 65718 W29A	APP CRS 290°	Rwy Idg TDZE Apt Elev	4402 2920 2925
--	------------------------	-----------------------------	---

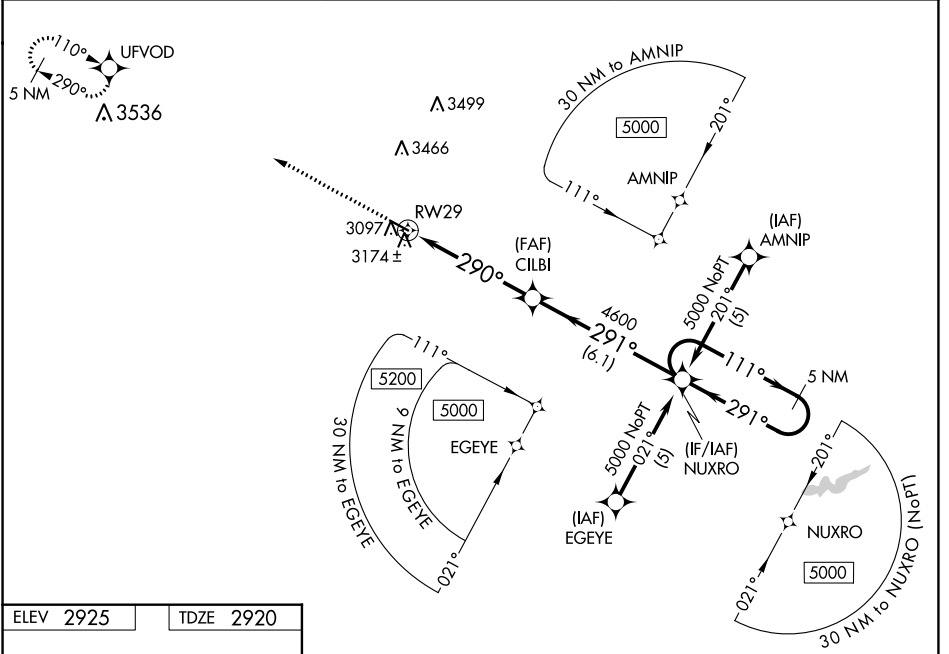
RNAV (GPS) RWY 29

THOMAS COUNTY (TIF')

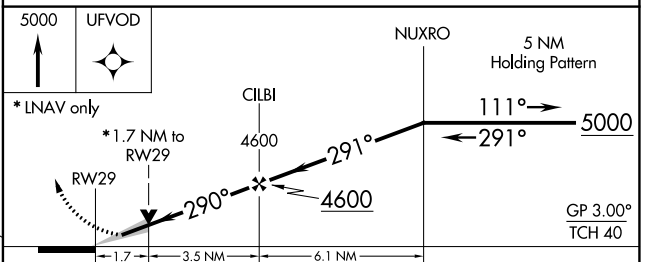
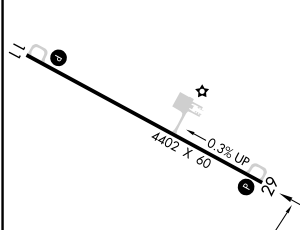
⚠ Baro-VNAV NA when using North Platte altimeter setting. For uncompensated Baro-VNAV systems, LNAV/VNAV NA below -20°C (-4°F) or above 54°C (130°F). DME/DME RNP-0.3 NA. When local altimeter setting not received use North Platte altimeter setting and increase all DA 137 feet and all MDA 140 feet; increase LPV and LNAV/VNAV Cats A and B visibility ½ mile. VDP NA with North Platte altimeter setting.

⚠ MISSED APPROACH: Climb to 5000 direct UFVOD and hold.

AWOS-3 120,825	DENVER CENTER 127.95 338.2	CTAF 122.9
--------------------------	--------------------------------------	----------------------



ELEV 2925	TDZE 2920
------------------	------------------



CATEGORY	A	B	C	D
LPV DA	3170-1	250 (300-1)		NA
LNAV/VNAV DA	3444-2	524 (600-2)		NA
LNAV MDA	3480-1	560 (600-1)		NA
CIRCLING	3480-1	555 (600-1)		NA

MIRL Rwy 11-29
REIL Rws 11 and 29

NC-2, 11 JUL 2024 to 08 AUG 2024

NC-2, 11 JUL 2024 to 08 AUG 2024