

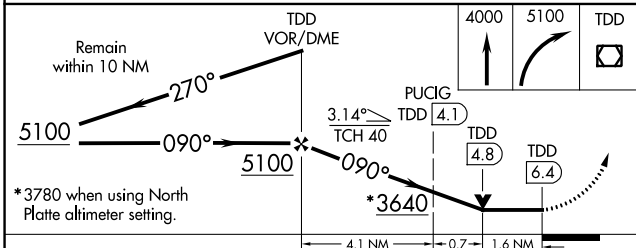
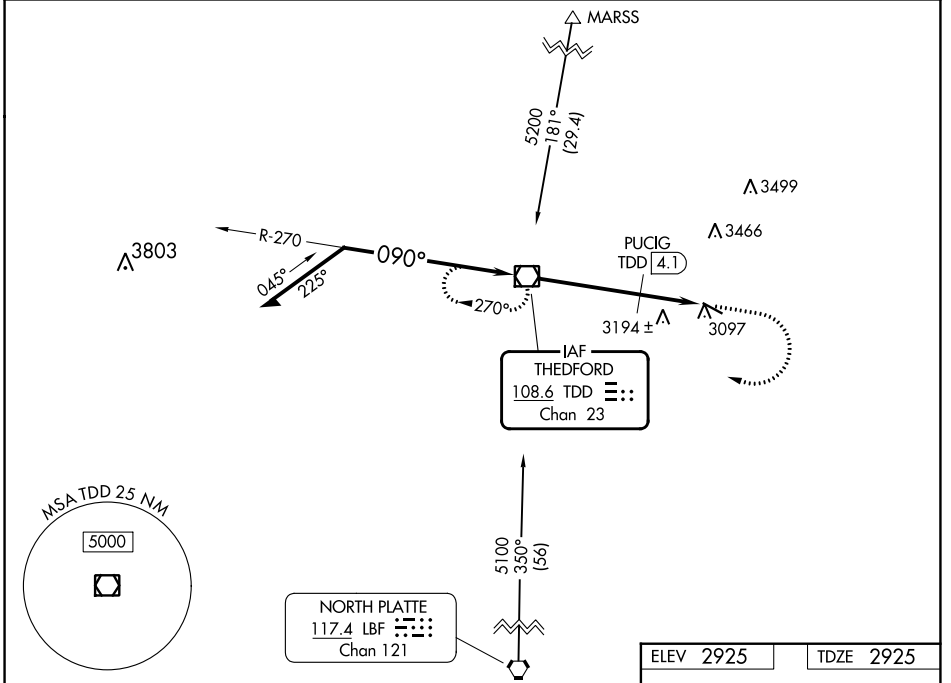
VOR/DME TDD <b>108.6</b> Chan <b>23</b>	APP CRS <b>090°</b>	Rwy Idg TDZE Apt Elev	<b>4402</b> <b>2925</b> <b>2925</b>
---	------------------------	-----------------------------	---

**VOR RWY 11**  
THOMAS COUNTY (TIF')

**NA** Visibility reduction by helicopters NA. When local altimeter setting not received, use North Platte altimeter setting and increase all MDA 140 feet, increase S-11 Cat B and Circling Cat B visibility 1/4 mile. VDP NA when using North Platte altimeter setting.

MISSED APPROACH: Climb to 4000 then climbing right turn to 5100 direct TDD VOR/DME and hold.

AWOS-3 <b>120.825</b>	DENVER CENTER <b>127.95 338.2</b>	CTAF <b>122.9</b>
--------------------------	--------------------------------------	----------------------



ELEV 2925	TDZE 2925
-----------	-----------

The final approach segment diagram shows a 090° turn and a climb to 4402 feet at 60 knots, with a 0.3% climb gradient. It also indicates the presence of MIRL Rwy 11-29 and REIL Rwy 11 and 29.

PUCIG FIX MINIMUMS	
S-11	3500-1 575 (600-1)
CIRCLING	3500-1 575 (600-1)

MIRL Rwy 11-29		REIL Rwy 11 and 29			
FAF to MAP 6.4 NM					
Knots	60	90	120	150	180
Min:Sec	6:30	4:20	3:15	2:36	2:10

CATEGORY	A	B	C	D
S-11	3640-1	715 (800-1)		NA
CIRCLING	3640-1	715 (800-1)		NA
PUCIG FIX MINIMUMS				
S-11	3500-1	575 (600-1)		NA
CIRCLING	3500-1	575 (600-1)		NA

NC-2, 11 JUL 2024 to 08 AUG 2024

NC-2, 11 JUL 2024 to 08 AUG 2024