

| | | |
|---|------------------------|---|
| VOR/DME TDD 108.6 Chan 23 | APP CRS 272° | Rwy Idg 4402 TDZE 2920 Apt Elev 2925 |
|---|------------------------|---|

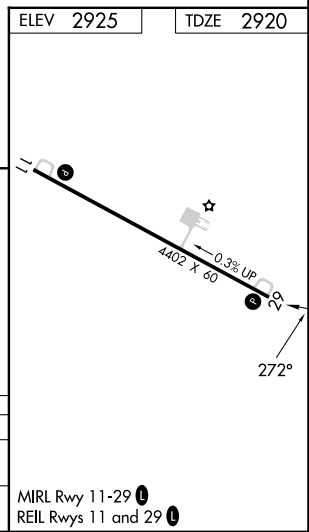
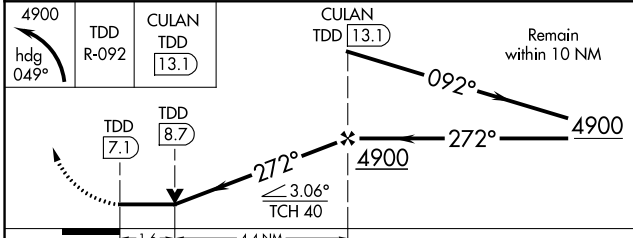
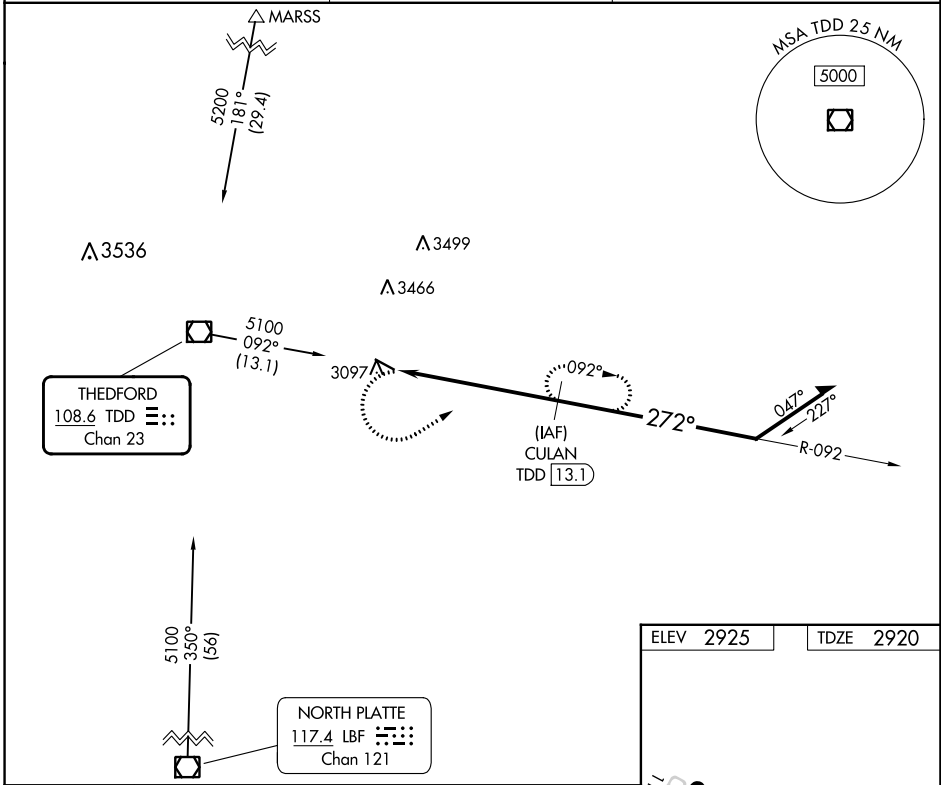
VOR RWY 29
THOMAS COUNTY (TIF')

DME required.

NA Rwy 29 helicopter visibility reduction below 3/4 SM NA. When local altimeter setting not received, use North Platte altimeter setting and increase all MDA 140 feet. VDP NA when using North Platte altimeter setting.

MISSED APPROACH: Climbing left turn to 4900 on heading 049° and TDD R-092 to CULAN/TDD 13.1 DME and hold.

| | | |
|--------------------------|--------------------------------------|----------------------|
| AWOS-3 120.825 | DENVER CENTER 127.95 338.2 | CTAF 122.9 |
|--------------------------|--------------------------------------|----------------------|



| CATEGORY | A | B | C | D |
|----------|--------|-------------|---|----|
| S-29 | 3480-1 | 560 (600-1) | | NA |
| CIRCLING | 3480-1 | 555 (600-1) | | NA |

NC-2, 11 JUL 2024 to 08 AUG 2024

NC-2, 11 JUL 2024 to 08 AUG 2024