

WAAS CH <b>58005</b> <b>W19A</b>	APP CRS <b>187°</b>	Rwy Idg <b>5760</b> TDZE <b>749</b> Apt Elev <b>759</b>
--	------------------------	---

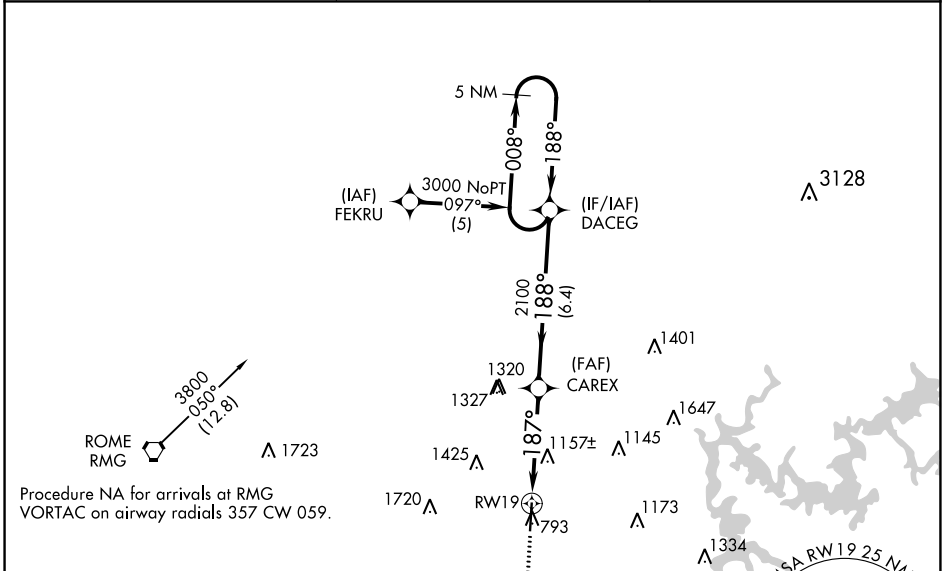
# RNAV (GPS) RWY 19

CARTERSVILLE (VPC)

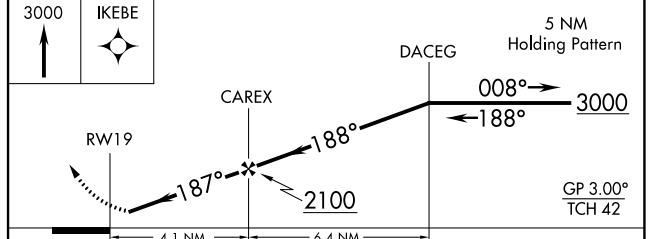
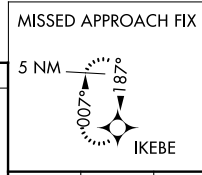
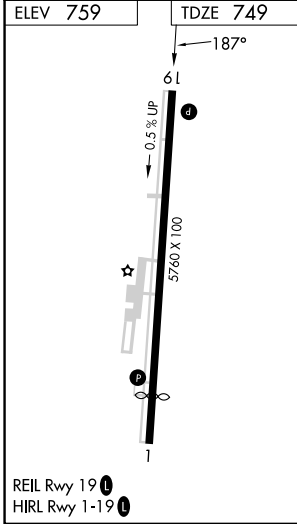
**⚠** When local alimeter setting not received, use Rome alimeter setting and increase LPV DA to 1072 and all MDA 80 feet; increase LNAV MDA Cat B visibility ¼ SM and Cat C/D visibility ½ SM. DME/DME RNP-0.3 NA. Rwy 19 helicopter visibility reduction below ¾ SM NA.

MISSED APPROACH: Climb to 3000 direct IKEBE and hold.

AWOS-3PT <b>120.525</b>	ATLANTA APP CON <b>121.0 268.7</b>	UNICOM <b>122.7 (CTAF)</b>
----------------------------	---------------------------------------	-------------------------------



Procedure NA for arrivals at RMG VORTAC on airway radials 357 CW 059.



CATEGORY	A	B	C	D
LPV DA	1008-1		259 (300-1)	
LNAV MDA	1420-1	671 (700-1)	1420-1½	671 (700-1½)
CIRCLING	1420-1 661 (700-1)	1600-1¼ 841 (900-1¼)	1740-3 981 (1000-3)	2020-3 1261 (1300-3)

SE-4, 11 JUL 2024 to 08 AUG 2024

SE-4, 11 JUL 2024 to 08 AUG 2024