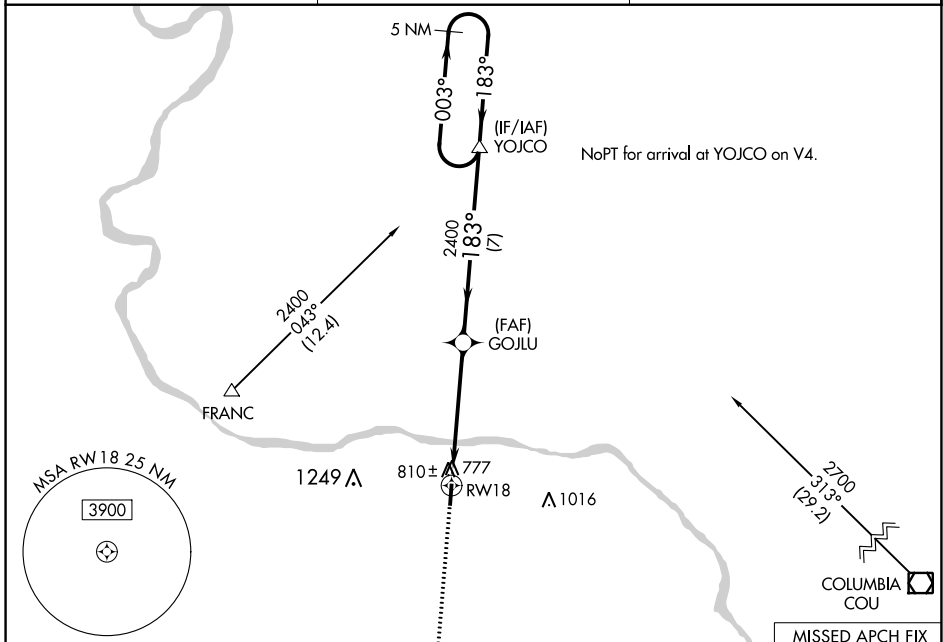


WAAS CH **72703**
W18A
 APP CRS **183°**
 Rwy Idg **4000**
 TDZE **715**
 Apt Elev **715**

RNAV (GPS) RWY 18

JESSE VIERTEL MEML (V.E.R.)

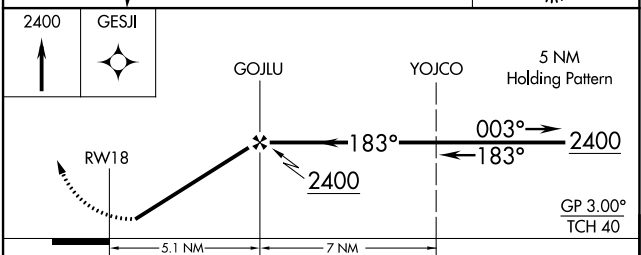
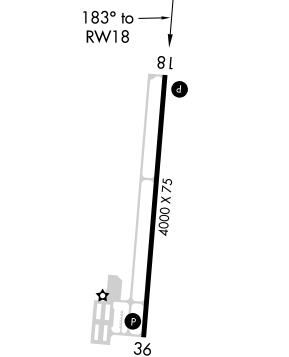
RNP APCH.		MISSED APPROACH: Climb to 2400 direct GESJ and hold.
<p>▼ NA Circling Rwy 36 NA at night. Rwy 18 helicopter visibility reduction below ¼ SM NA. Use Columbia Rgnl altimeter setting.</p>		
AWOS-3PT 119.625	MIZZU APP CON 124.375	UNICOM 122.7 (CTAF) ①



NC-3, 11 JUL 2024 to 08 AUG 2024

NC-3, 11 JUL 2024 to 08 AUG 2024

ELEV 715 TDZE 715



CATEGORY	A	B	C	D
LPV DA	1103-1½		388 (400-1½)	NA
LNAV MDA	1140-1	425 (500-1)	1140-1¼ 425 (500-1¼)	NA
CIRCLING	1260-1 545 (600-1)	1340-1 625 (700-1)	1420-2 705 (800-2)	NA

REIL Rws 18 and 36 **①**
 MIRL Rwy 18-36 **①**