

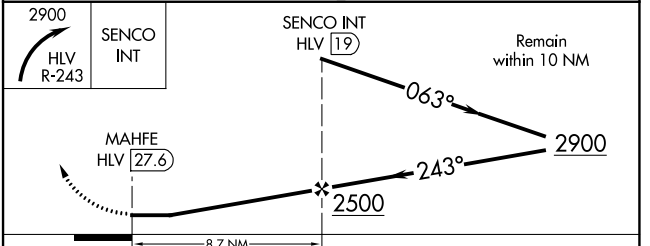
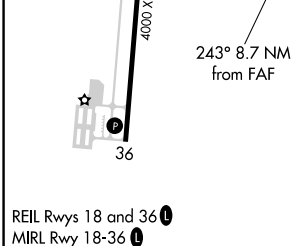
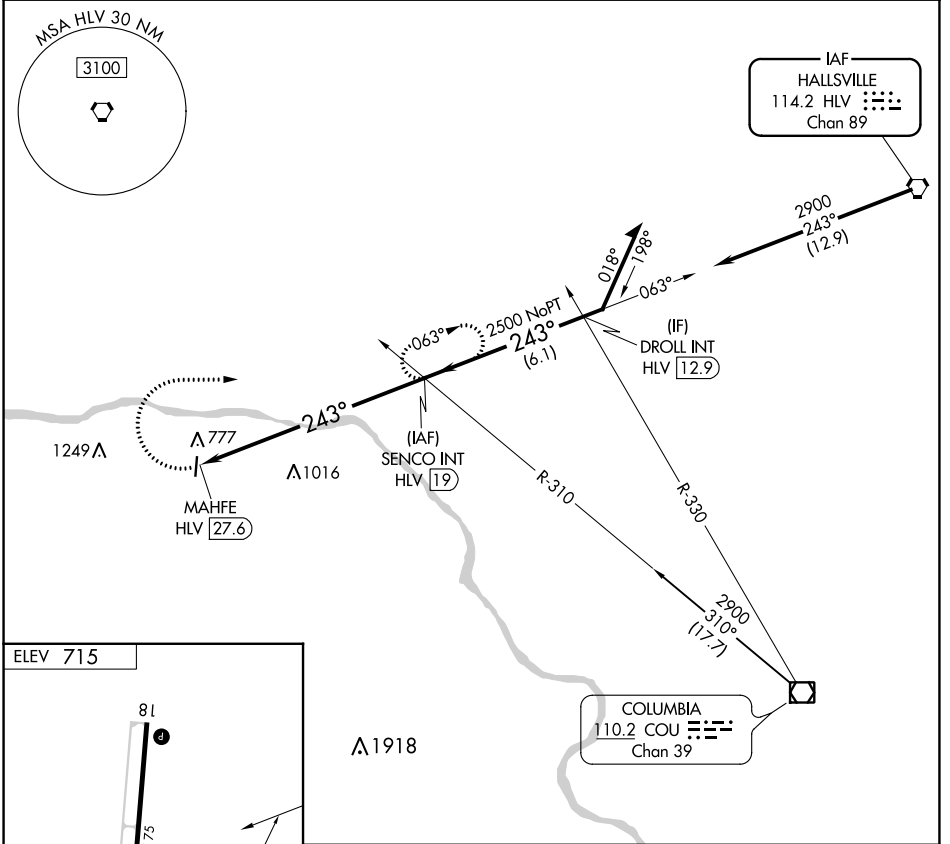
VORTAC HLV <b>114.2</b> Chan <b>89</b>	APP CRS <b>243°</b>	Rwy Idg TDZE Apt Elev	<b>N/A</b> <b>N/A</b> <b>715</b>
--	------------------------	-----------------------------	--

**VOR-A**  
JESSE VIERTEL MEML (V.E.R.)

**▼** Rwy 36 helicopter visibility reduction below 1 SM NA.  
**▲ NA** Circling Rwy 36 NA at night.

**MISSED APPROACH:** Climbing right turn to 2900 via HLV 2900 R-243 to SENCO INT/HLV 19 DME and hold.

AWOS-3PT <b>119.625</b>	MIZZU APP CON <b>124.375</b>	UNICOM <b>122.7 (CTAF)</b>
----------------------------	---------------------------------	-------------------------------



FAF to MAP 8.7 NM					
Knots	60	90	120	150	180
Min:Sec	8:42	5:48	4:21	3:29	2:54
CATEGORY	A	B	C	D	
CIRCLING	1900-1¼ 1185 (1200-1¼)	1900-1½ 1185 (1200-1½)	1900-3 1185 (1200-3)	NA	

NC-3, 11 JUL 2024 to 08 AUG 2024

NC-3, 11 JUL 2024 to 08 AUG 2024