

APP CRS	Rwy Idg	<b>4000</b>
<b>174°</b>	TDZE	<b>247</b>
	Apt Elev	<b>248</b>

# RNAV (GPS) RWY 17

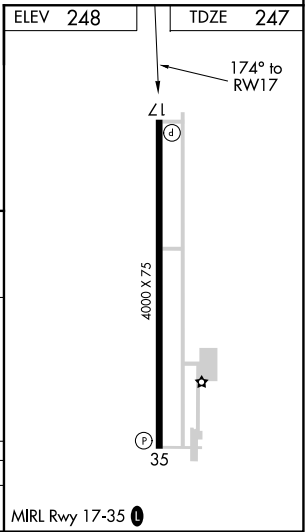
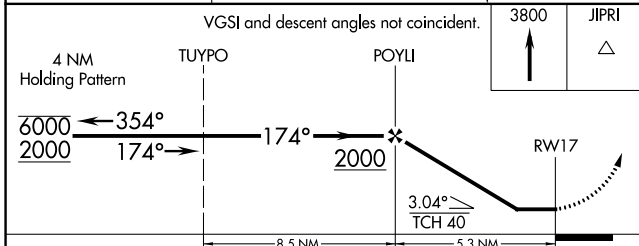
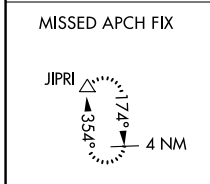
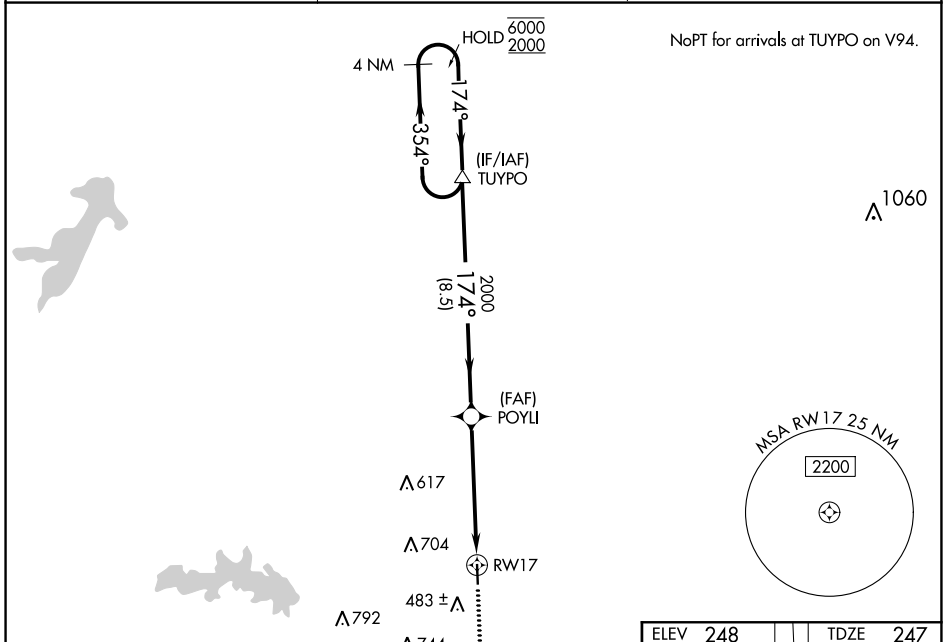
PANOLA COUNTY-SHARPE FLD (4F2)

RNP APCH-GPS.

**▲** Procedure NA at night. Rwy 17 helicopter visibility reduction below 1 SM NA. When local altimeter setting not received, use Longview altimeter setting.

MISSED APPROACH: Climb to 3800 direct JIPRI and hold, continue climb-in-hold to 3800.

AWOS-3PT <b>121.125</b>	SHREVEPORT APP CON ★ <b>119.9 335.55</b>	UNICOM <b>122.8 (CTAF) ①</b>
----------------------------	---------------------------------------------	---------------------------------



CATEGORY	A	B	C	D
LNAV MDA	760-1	513 (600-1)	760-1 2/3 513 (600-1 2/3)	NA