

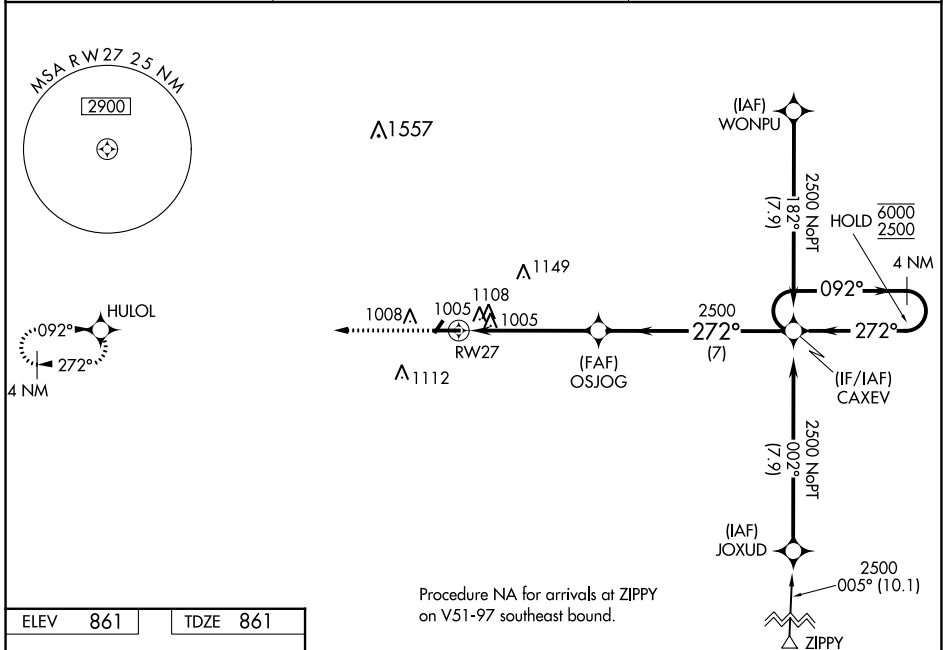
WAAS CH <b>65734</b> <b>W27A</b>	APP CRS <b>272°</b>	Rwy Idg TDZE Apt Elev	<b>5000</b> <b>861</b> <b>861</b>
--	------------------------	-----------------------------	---

# RNAV (GPS) RWY 27

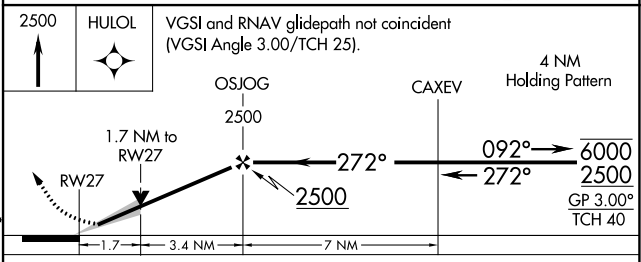
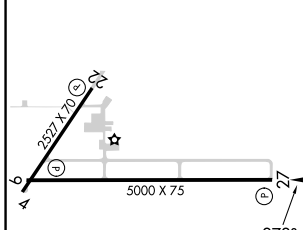
FRANKFORT CLINTON COUNTY RGNL (F'KR)

RNP APCH - GPS.	<p><b>MISSED APPROACH:</b> Climb to 2500 direct HULOL and hold.</p>
<p><b>▽</b> Circling Rwy 4, 22 NA at night. For uncompensated Baro-VNAV systems, LNAV/VNAV NA below -16°C or above 54°C.</p>	

AWOS-3 <b>124.325</b>	GRISSOM APP CON * <b>123.85 291.675</b>	UNICOM <b>123.0 (CTAF) 0</b>
--------------------------	--	---------------------------------



ELEV <b>861</b>	TDZE <b>861</b>
-----------------	-----------------



	A	B	C	D
LPV DA	1111-3/4 250 (300-3/4)			
LNAV/VNAV DA	1476-1 3/4 615 (700-1 3/4)			
LNAV MDA	1420-1	559 (600-1)	1420-1 1/2	559 (600-1 1/2)
<b>☑</b> CIRCLING	1460-1	599 (600-1)	1520-1 3/4 659 (700-1 3/4)	1520-2 659 (700-2)

MIRL Rwy 9-27 and 4-22 **0**  
REIL Rwy 9 and 27 **0**

EC-2, 11 JUL 2024 to 08 AUG 2024

EC-2, 11 JUL 2024 to 08 AUG 2024