

|  |                        |                             |   |
|--|------------------------|-----------------------------|---|
| WAAS<br>CH <b>62834</b><br><b>W09A</b> | APP CRS<br><b>092°</b> | Rwy Idg<br>TDZE<br>Apt Elev | <b>5000</b><br><b>856</b><br><b>861</b> |
|--|------------------------|-----------------------------|---|

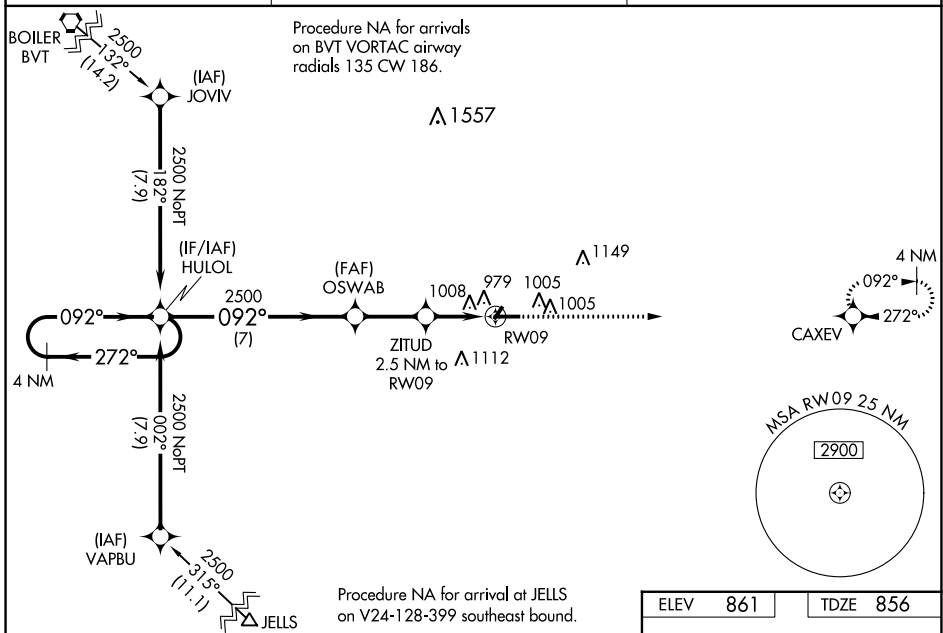
# RNAV (GPS) RWY 9

FRANKFORT CLINTON COUNTY RGNL (F'K'R)

Baro-VNAV NA when using Indianapolis Exec altimeter setting. For uncompensated Baro-VNAV systems, LNAV/VNAV NA below -16°C (4°F) or above 54°C (130°F). DME/DME RNP-0.3 NA. VDP NA with Indianapolis Exec altimeter setting. When local altimeter setting not received, use Indianapolis Exec altimeter setting; increase LPV DA to 1162 feet and visibility 1/8 SM all Cats; increase LNAV/VNAV DA to 1245 feet and visibility 1/8 SM all Cats; increase all MDAs 60 feet and LNAV and Circling Cats C/D visibilities 1/4 SM.

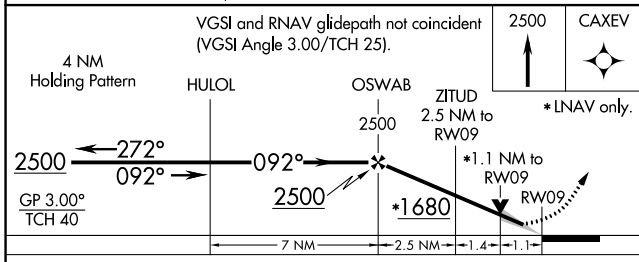
**MISSED APPROACH:**  
Climb to 2500 direct CAXEV and hold.

|                          |   |                                 |
|--------------------------|---|---------------------------------|
| AWOS-3<br><b>124.325</b> | GRISSOM APP CON*<br><b>123.85 291.675</b> | UNICOM<br><b>123.0 (CTAF) 0</b> |
|--------------------------|---|---------------------------------|

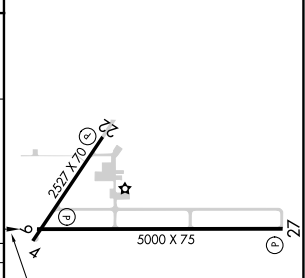


EC-2, 11 JUL 2024 to 08 AUG 2024

EC-2, 11 JUL 2024 to 08 AUG 2024



|          |          |
|----------|----------|
| ELEV 861 | TDZE 856 |
|----------|----------|



| CATEGORY          | A      | B           | C                             | D                     |
|-------------------|--------|-------------|-------------------------------|-----------------------|
| LPV DA            |        | 1106-7/8    | 250 (300-7/8)                 |                       |
| LNAV/VNAV DA      |        | 1189-1      | 333 (400-1)                   |                       |
| LNAV MDA          | 1260-1 | 404 (400-1) | 1260-1 1/8                    | 404 (400-1 1/8)       |
| <b>C</b> CIRCLING | 1460-1 | 599 (600-1) | 1520-1 3/4<br>659 (700-1 3/4) | 1520-2<br>659 (700-2) |

MIRL Rwy 4-22 and 9-27 0

REIL Rwy 9 and 27 0