

APP CRS	Rwy Idg	3196
182°	TDZE	313
	Apt Elev	313

RNAV (GPS) RWY 18

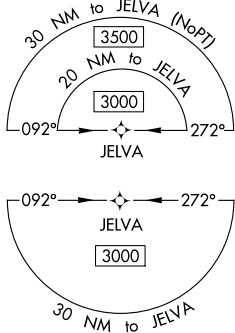
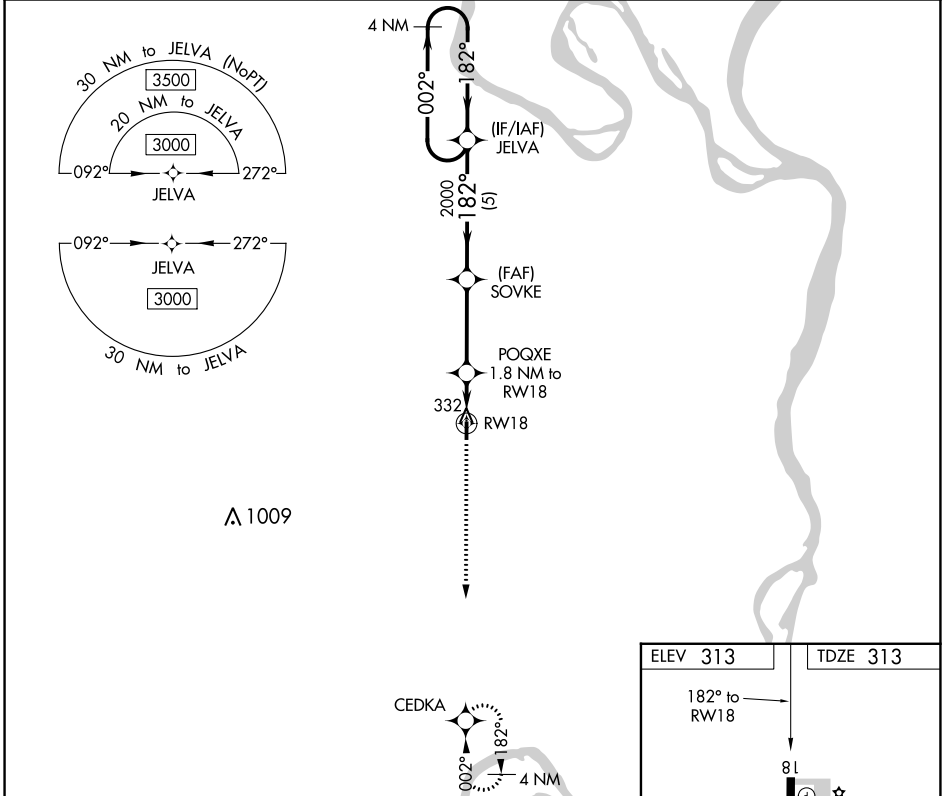
MISSISSIPPI COUNTY (CHQ)

RNP APCH-GPS

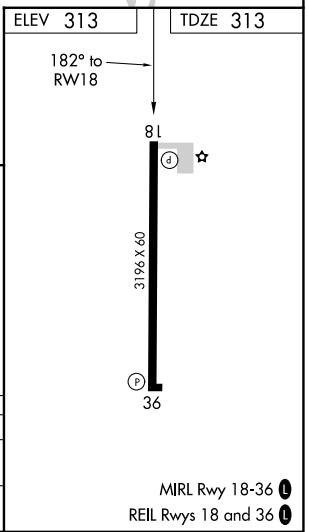
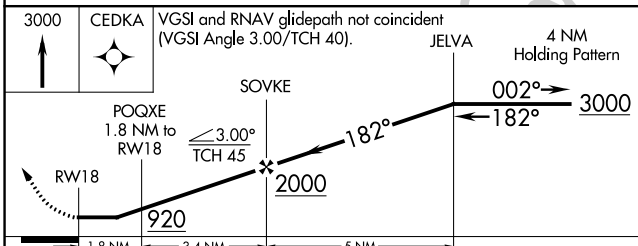
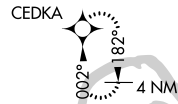
Procedure NA at night. Use Sikeston altimeter setting, if not received use Cairo altimeter setting and increase all MDA 20 feet. Helicopter visibility reduction below 1 SM NA.

MISSED APPROACH: Climb to 3000 direct CEDKA and hold.

SIK AWOS-3 119.175	MEMPHIS CENTER 133.65 292.15	CTAF 122.9
------------------------------	--	----------------------



△ 1009



CATEGORY	A	B	C	D
LNVA MDA	800-1	487 (500-1)		NA
CIRCLING	800-1 487 (500-1)	860-1 547 (600-1)		NA

NC-3, 11 JUL 2024 to 08 AUG 2024

NC-3, 11 JUL 2024 to 08 AUG 2024