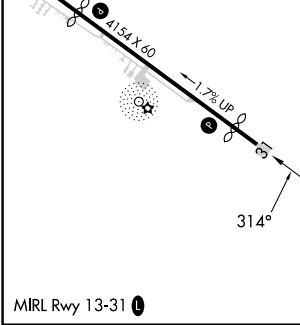
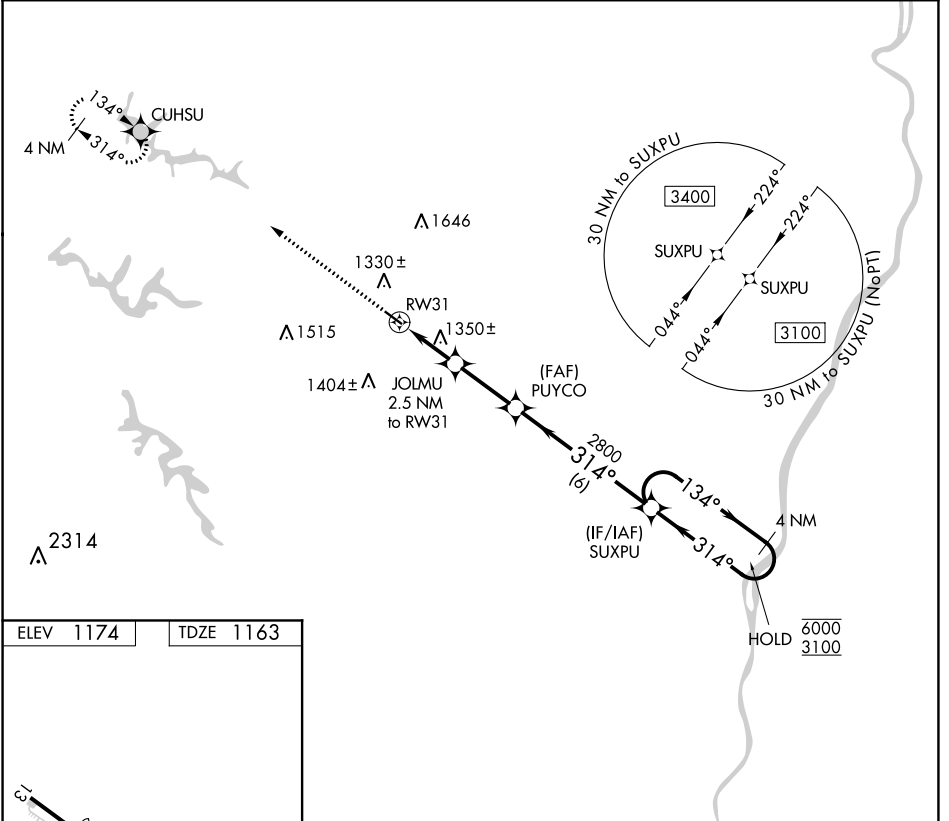


APP CRS	Rwy Idg	3744
314°	TDZE	1163
	Apt Elev	1174

RNAV (GPS) RWY 31

HARRISON COUNTY (8G6)

RNP APCH.		MISSED APPROACH: Climb to 3000 direct CUHSU and hold.
<p>▼ Rwy 31 helicopter visibility reduction below 1 SM NA. Use Wheeling altimeter setting; when not received, use Washington altimeter setting and increase all MDA 40 feet. Procedure NA at night.</p> <p>▲ NA</p>		
HLG ASOS 127.375	CLEVELAND CENTER 126.95 239.30	UNICOM 122.8 (CTAF) 0



3000	CUHSU	Visual Segment - Obstacles.		4 NM Holding Pattern
		JOLMU 2.5 NM to RW31	PUYCO	SUXPU
		1940	2800	134° → 6000 ← 314° 3100
CATEGORY	A	B	C	D
LNNAV MDA	1660-1	497 (500-1)	NA	

EC-2, 11 JUL 2024 to 08 AUG 2024

EC-2, 11 JUL 2024 to 08 AUG 2024