

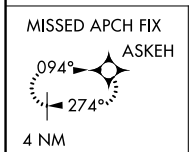
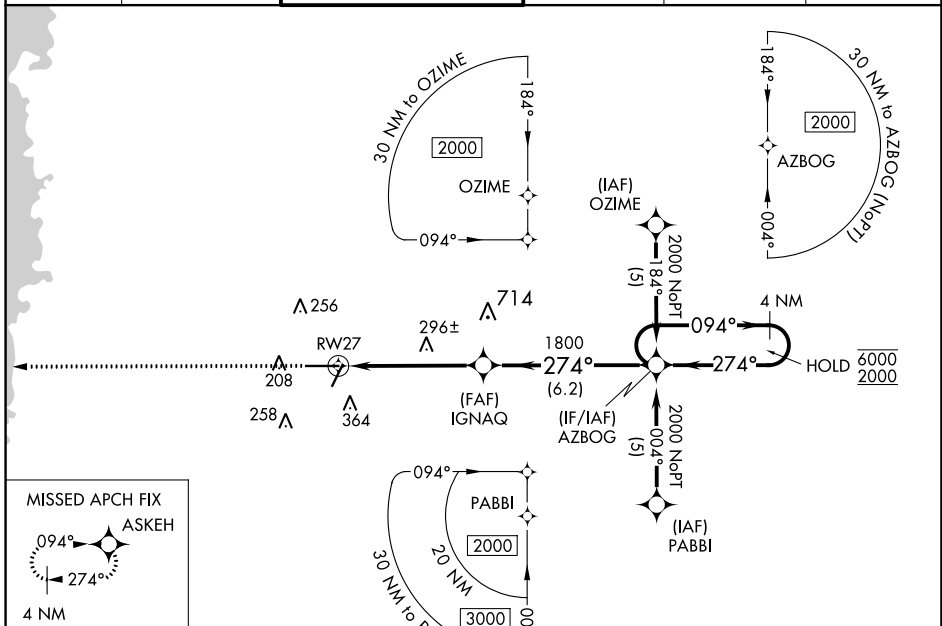
WAAS CH 86408 W27A	APP CRS 274°	Rwy Idg TDZE Apt Elev	7001 69 76
--	------------------------	-----------------------------	---------------------------------------

RNAV (GPS) RWY 27

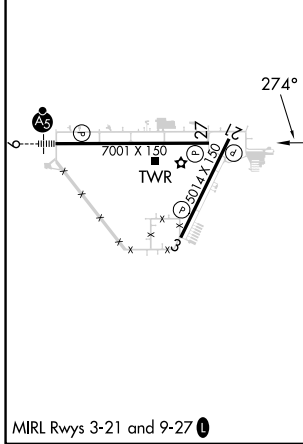
BROOKSVILLE-TAMPA BAY RGNL (BKV)

RNP APCH.		MISSED APPROACH: Climb to 2000 direct ASKEH and hold.	
Rwy 27 helicopter visibility reduction below 3/4 SM NA. For uncompensated Baro-VNAV systems, LNAV/VNAV NA below -15°C or above 48°C.			

ASOS 134.725	TAMPA APP CON 125.3 316.05	BROOKSVILLE TOWER ★ 118.55 (CTAF)	GND CON 121.4	CLNC DEL 119.125	UNICOM 123.0
------------------------	--------------------------------------	---	-------------------------	----------------------------	------------------------



ELEV 76	TDZE 69
---------	---------



2000	ASKEH	VGSI and RNAV glidepath not coincident (VGSI Angle 3.00/TCH 57).
*RNAV only.		4 NM Holding Pattern
*1.4 NM to RWY 27		IGNAQ 1800
RWY 27		094° → 6000
		← 274° 2000
		GP 3.00° TCH 55

CATEGORY	A	B	C	D
LPV DA		442-1 1/4	373 (400-1 1/4)	
LNAV/VNAV DA		595-1 3/4	526 (600-1 3/4)	
LNAV MDA	620-1	551 (600-1)	620-1 5/8 551 (600-1 5/8)	620-1 3/4 551 (600-1 3/4)

SE-3, 11 JUL 2024 to 08 AUG 2024

SE-3, 11 JUL 2024 to 08 AUG 2024