


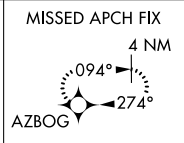
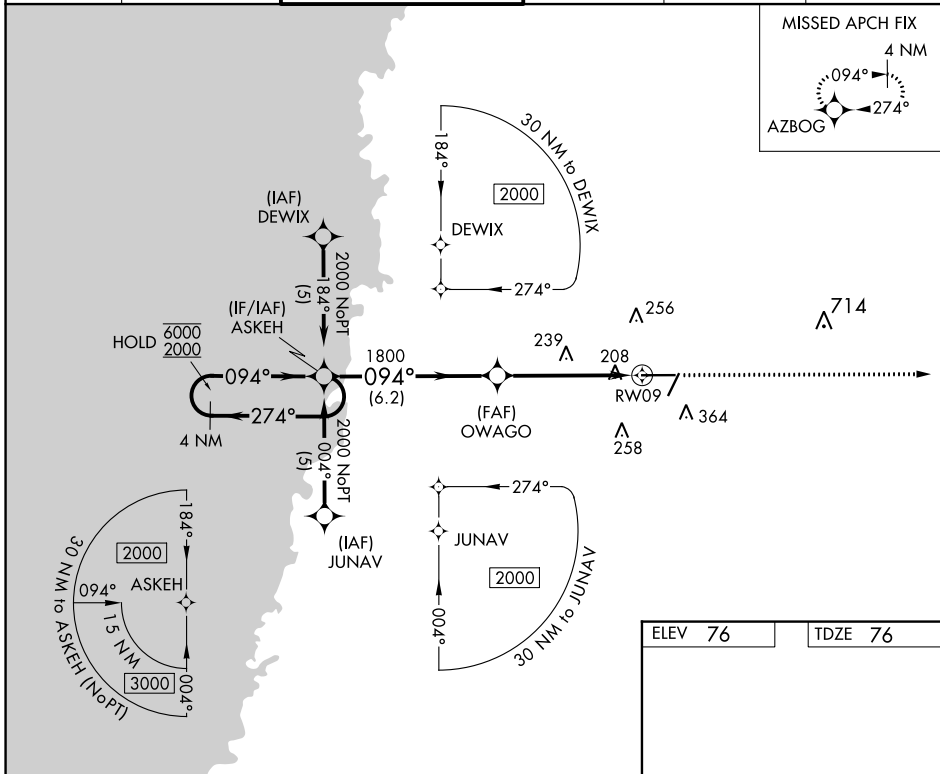
APP CRS	Rwy Idg	<b>7001</b>
<b>094°</b>	TDZE	<b>76</b>
	Apt Elev	<b>76</b>

# RNAV (GPS) RWY 9

BROOKSVILLE-TAMPA BAY RGNL (BKV)

<p>RNP APCH.</p> <p>▼ For uncompensated Baro-VNAV systems, LNAV/VNAV NA below -15°C or above 48°C. ▲ For inop ALS increase LNAV Cat D visibility to 1/4 SM.</p>	<p>MALS R</p>  <p>MISSED APPROACH: Climb to 2000 direct AZBOG and hold.</p>
---	--

ASOS <b>134.725</b>	TAMPA APP CON <b>125.3 316.05</b>	BROOKSVILLE TOWER ★ <b>118.55 (CTAF) 0</b>	GND CON <b>121.4</b>	CLNC DEL <b>119.125</b>	UNICOM <b>123.0</b>
------------------------	--------------------------------------	---	-------------------------	----------------------------	------------------------

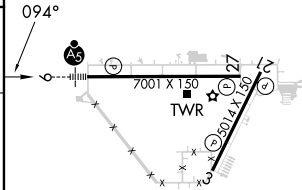


SE-3, 11 JUL 2024 to 08 AUG 2024

SE-3, 11 JUL 2024 to 08 AUG 2024

4 NM Holding Pattern		VGSi and RNAV glidepath not coincident (VGSi Angle 3.00/TCH 58).		2000	AZBOG
ASKEH		OWAGO		*LNAV only.	
6000	2000	1800	1800	*1.2 NM to RWY09	
GP 3.00°	TCH 57	6.2 NM	4 NM	1.2	
CATEGORY	A	B	C	D	
LNAV/VNAV	DA	507-1 431 (500-1)			
LNAV MDA	500-3/4 424 (500-3/4)			500-1	424 (500-1)

ELEV 76      TDZE 76



MIRL Rwy's 3-21 and 9-27