

| | | |
|--|------------------------|---|
| WAAS CH 49131 W17A | APP CRS 166° | Rwy Idg 4010 TDZE 1522 Apt Elev 1523 |
|--|------------------------|---|

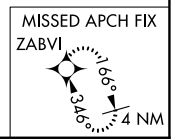
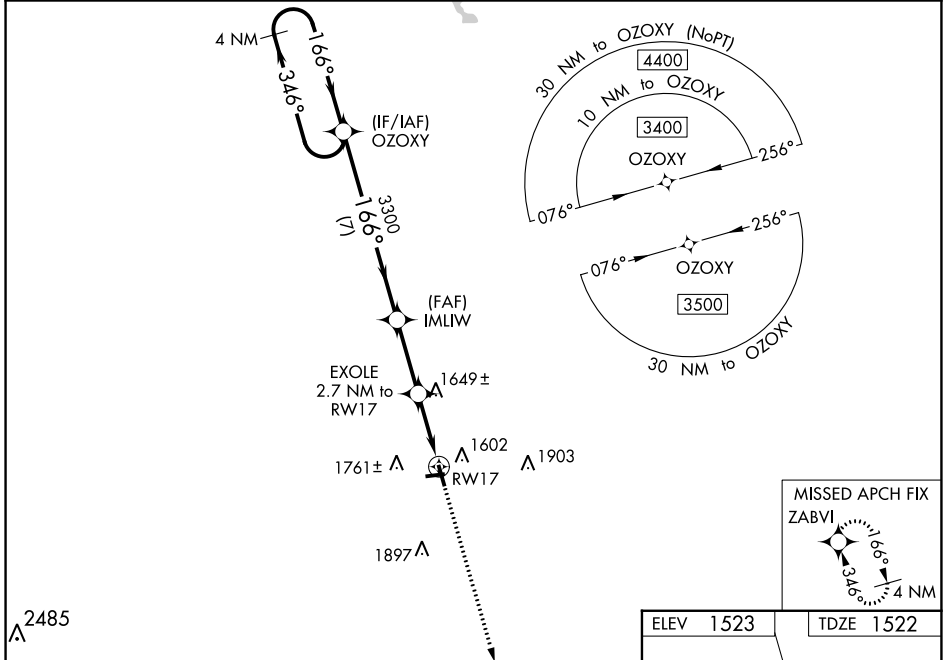
RNAV (GPS) RWY 17

LANGLADE COUNTY (AIG)

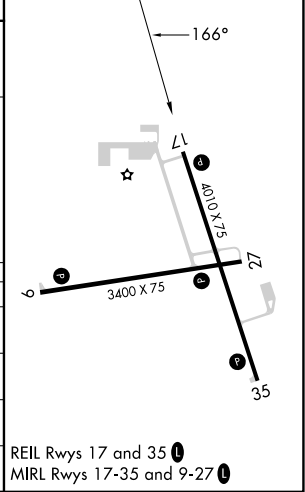
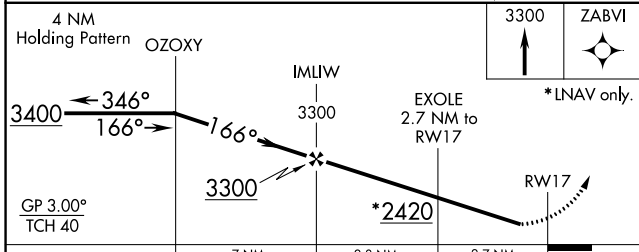
▼ Baro-VNAV NA when using Wausau Downtown altimeter setting. For uncompensated Baro-VNAV systems, LNAV/VNAV NA below -18°C (0°F) or above 54°C (130°F). Procedure NA at night.
 ▲ DME/DME RNP-0.3 NA. Helicopter visibility reduction below 1 SM NA. When local altimeter setting not received, use Wausau Downtown altimeter setting; increase all DA 105 feet all LPV visibilities ¼ mile, and all LNAV/VNAV visibilities ⅓ mile; increase all MDA 120 feet, LNAV Cat C and D visibilities ¼ mile, Circling Cat C visibility ½ mile, and Cat D visibility ¼ mile.

MISSED APPROACH:
Climb to 3300 direct ZABVI and hold.

| | | |
|--------------------------|--|---------------------------------|
| AWOS-3 119.075 | MINNEAPOLIS CENTER 124.4 317.7 | UNICOM 122.8 (CTAF) ① |
|--------------------------|--|---------------------------------|



| | |
|-----------|-----------|
| ELEV 1523 | TDZE 1522 |
|-----------|-----------|



| CATEGORY | A | B | C | D |
|--------------|--------|-------------|--------------|--------------|
| LPV DA | | 1772-1 | 250 (300-1) | |
| LNAV/VNAV DA | | 1924-1⅓ | 402 (400-1⅓) | |
| LNAV MDA | 1920-1 | 398 (400-1) | 1920-1⅓ | 398 (400-1⅓) |
| CIRCLING | 2120-1 | 597 (600-1) | 2120-1½ | 2120-2 |
| | | | 597 (600-1½) | 597 (600-2) |

EC-3, 11 JUL 2024 to 08 AUG 2024

EC-3, 11 JUL 2024 to 08 AUG 2024