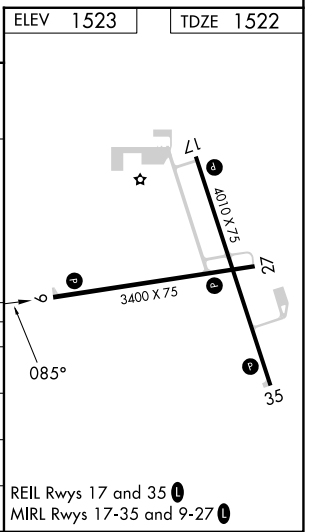
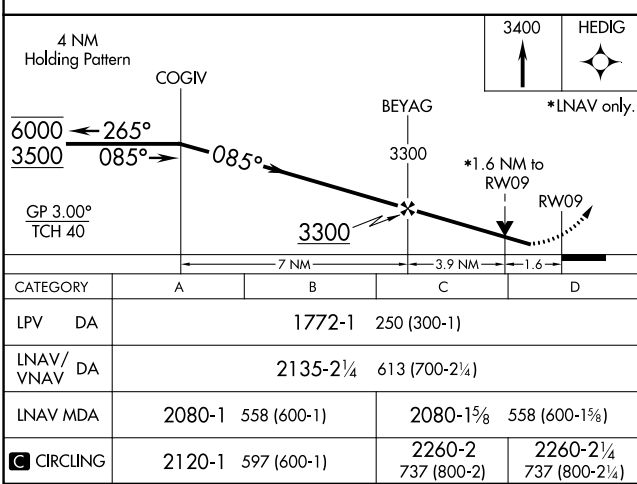
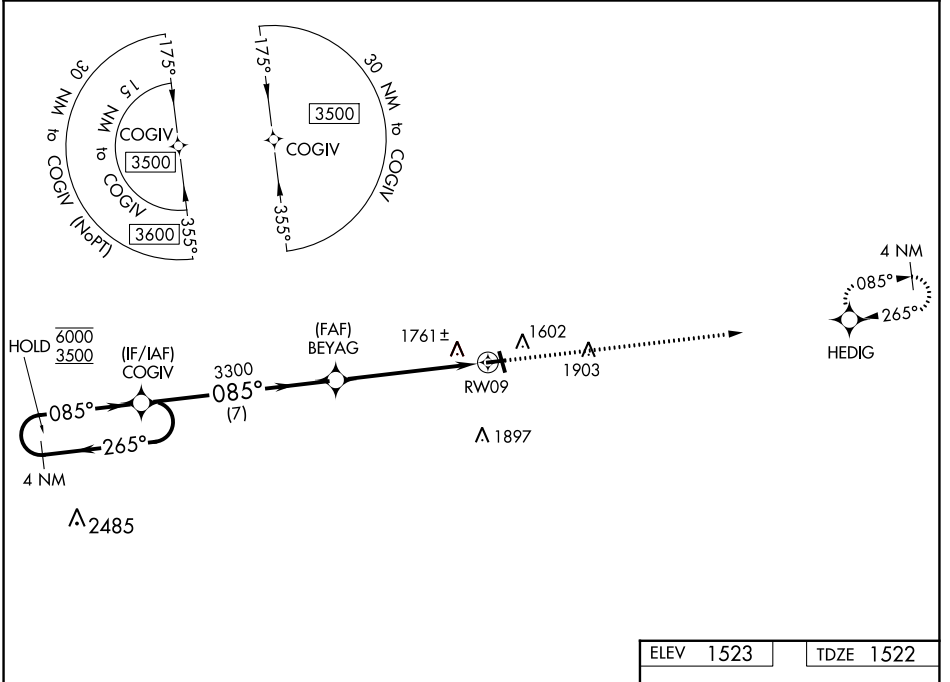


WAAS CH 82130 W09A	APP CRS 085°	Rwy Idg 3400 TDZE 1522 Apt Elev 1523
--	------------------------	---

RNAV (GPS) RWY 9

LANGLADE COUNTY (AIG)

RNP APCH.		MISSED APPROACH: Climb to 3400 direct HEDIG and hold.
AWOS-3 119.075	MINNEAPOLIS CENTER 124.4 317.7	UNICOM 122.8 (CTAF) 0



EC-3, 11 JUL 2024 to 08 AUG 2024

EC-3, 11 JUL 2024 to 08 AUG 2024