

WAAS CH <b>42830</b> <b>W21A</b>	APP CRS <b>213°</b>	Rwy Idg TDZE <b>1007</b> Apt Elev <b>1019</b>	<b>5000</b>
--	------------------------	---	-------------

# RNAV (GPS) RWY 21

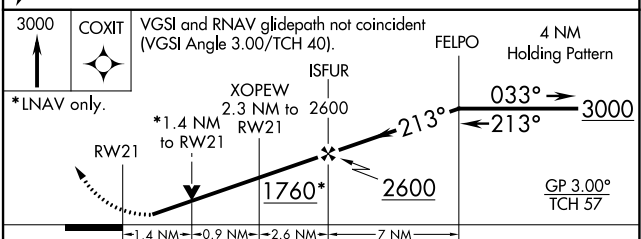
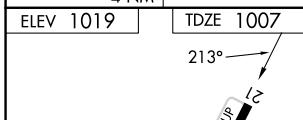
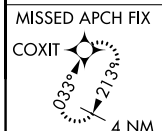
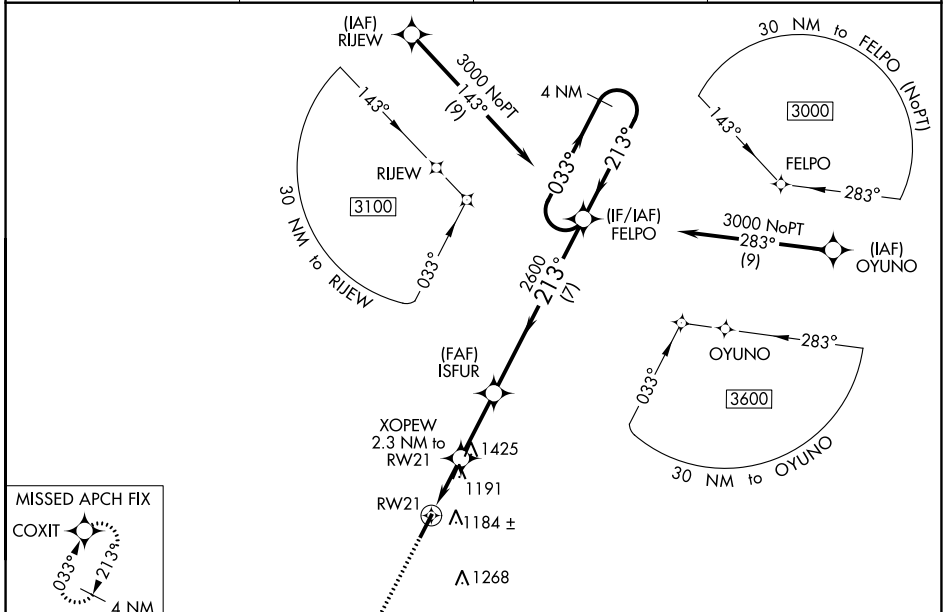
MOUNT STERLING/MONTGOMERY COUNTY (IOB)

RNP APCH - GPS

**▼** For uncompensated Baro-VNAV systems, LNAV/VNAV NA below -17°C or above 54°C. When local altimeter setting not received, use Lexington altimeter setting and increase LPV DA to 1332 feet and all visibilities ¼ SM. Increase LNAV/VNAV DA to 1555 feet and all visibilities ¼ SM. Increase all MDAs 80 feet and LNAV visibility Cat C/D ½ SM, and Circling visibility Cat C/D ¼ SM. Baro-VNAV and VDP NA when using Lexington altimeter setting. Rwy 21 helicopter visibility reduction below ¼ SM NA.

**▲ NA** MISSED APPROACH: Climb to 3000 direct COXIT and hold.

AWOS-3 <b>120.675</b>	LEXINGTON APP CON <b>120.15 259.3</b>	GCO <b>121.72</b>	UNICOM <b>122.8 (CTAF) 0</b>
--------------------------	--	----------------------	---------------------------------



CATEGORY	A	B	C	D
LPV DA		1257-¾	250 (300-¾)	
LNAV/VNAV DA		1480-1½	473 (500-1½)	
LNAV MDA	1460-1	453 (500-1)	1460-1½	453 (500-1½)
<b>C</b> CIRCLING	1540-1 521 (600-1)	1560-1 541 (600-1)	1740-2 721 (800-2)	1740-2¼ 721 (800-2¼)

MRL Rwy 3-21 0  
REIL Rws 3 and 21 0

SE-1, 11 JUL 2024 to 08 AUG 2024

SE-1, 11 JUL 2024 to 08 AUG 2024