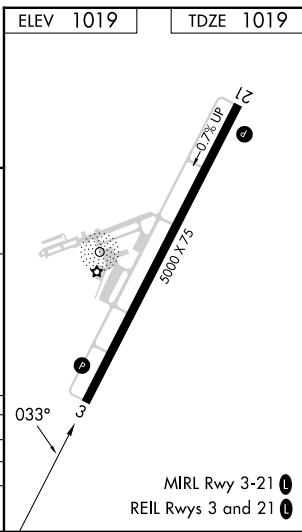
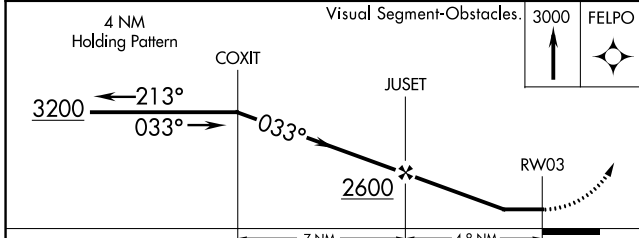
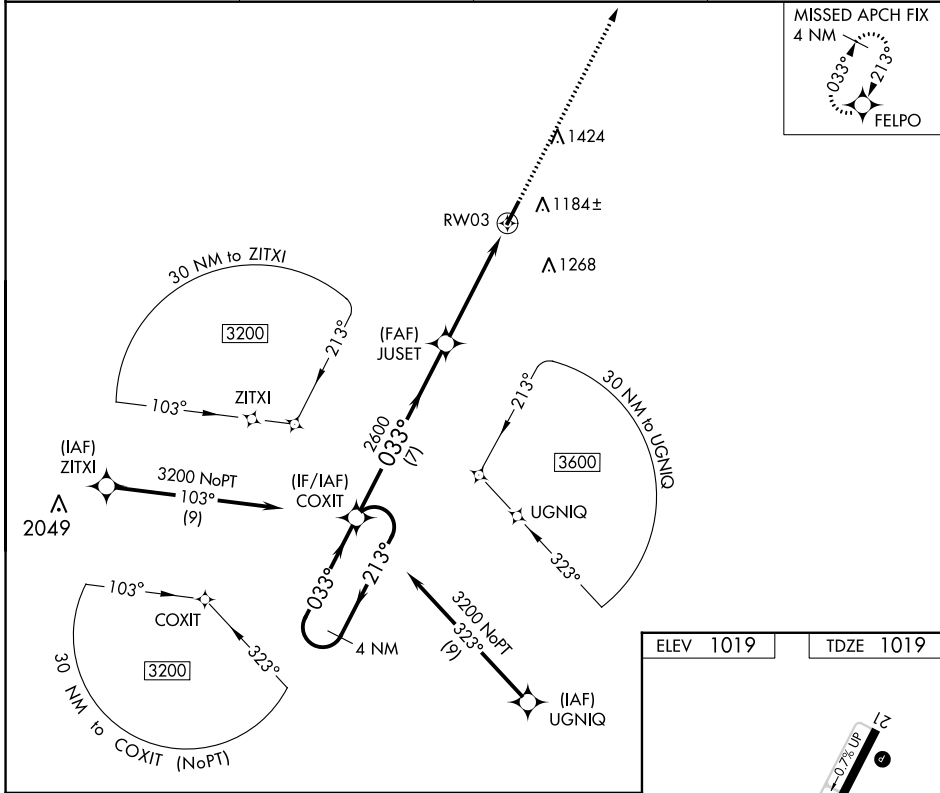


WAAS CH <b>81933</b> <b>W03A</b>	APP CRS <b>033°</b>	Rwy Idg TDZE Apt Elev	<b>5000</b> <b>1019</b> <b>1019</b>
--	------------------------	-----------------------------	---

# RNAV (GPS) RWY 3

MOUNT STERLING/MONTGOMERY COUNTY (IOB)

<p><b>NA</b> DME/DME RNP-0.3 NA. When local altimeter setting not received, use Lexington altimeter setting and increase all MDA 80 feet and all visibilities ¼ mile. Helicopter visibility reduction below ¾ SM NA.</p>		<p>MISSED APPROACH: Climb to 3000 direct FELPO and hold.</p>	
AWOS-3 <b>120.675</b>	LEXINGTON APP CON <b>120.15 259.3</b>	GCO <b>121.72</b>	UNICOM <b>122.8</b> (CTAF) <b>0</b>



CATEGORY	A	B	C	D
LP MDA	1540-1 521 (600-1)	1540-1½ 521 (600-1½)		
LNAV MDA	1560-1 541 (600-1)	1560-1¾ 541 (600-1¾)		
<b>CIRCLING</b>	1560-1 541 (600-1)		1740-2 721 (800-2)	1740-2¼ 721 (800-2¼)

SE-1, 11 JUL 2024 to 08 AUG 2024

SE-1, 11 JUL 2024 to 08 AUG 2024