

ULYSSES, KANSAS

AL-6226 (FAA)

23334

WAAS CH 99539 W12A	APP CRS 124°	Rwy ldg TDZE Apt Elev	4600 3071 3071
--	------------------------	-----------------------------	---

RNAV (GPS) RWY 12

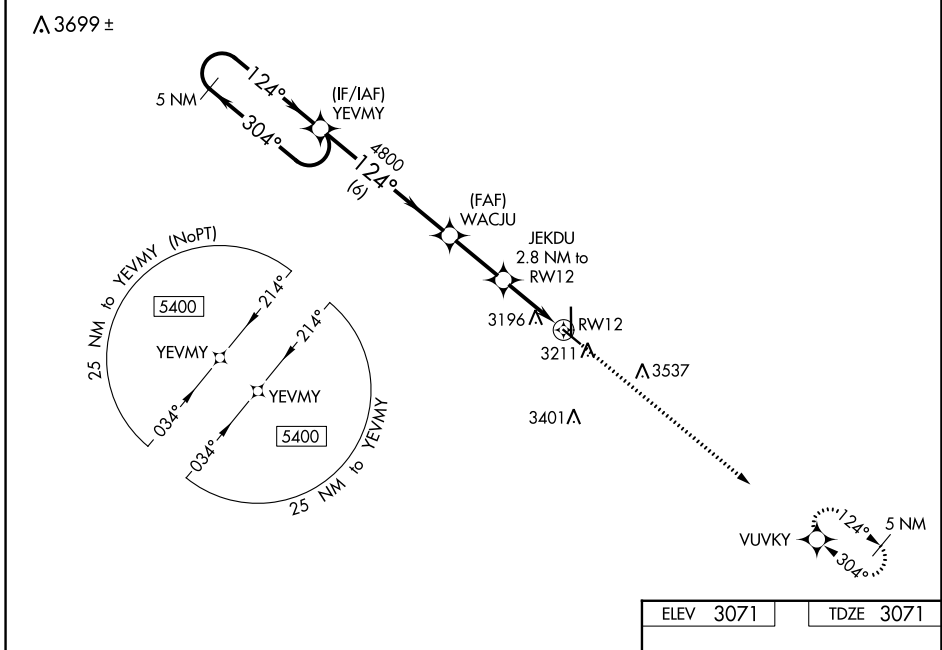
ULYSSES (ULS)

RNP APCH - GPS.

⚠ For uncompensated Baro-VNAV systems, LNAV/VNAV NA below -21°C or above 54°C.
⚠ When local altimeter setting not received, use Garden City altimeter setting: increase LPV DA to 3431 feet, LNAV/VNAV DA to 3563 feet and visibility 1/8 SM; increase all MDAs 120 Feet and visibility Cat C 1/4 SM. Baro-VNAV and VDP NA when using Garden City altimeter setting.

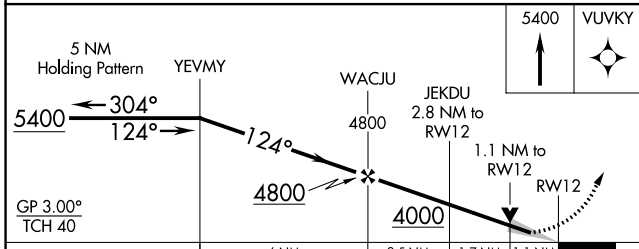
MISSED APPROACH:
 Climb to 5400 direct VUVKY and hold.

AWOS-3PT 118.95	KANSAS CITY CENTER 125.2 285.425	UNICOM 122.8 (CTAF) 0
---------------------------	--	---------------------------------



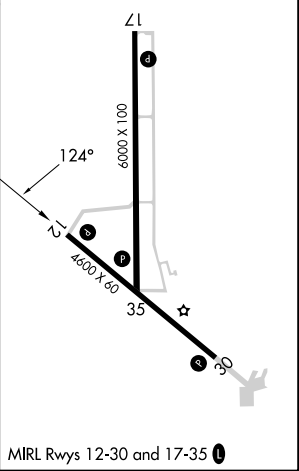
NC-2, 11 JUL 2024 to 08 AUG 2024

NC-2, 11 JUL 2024 to 08 AUG 2024



ELEV 3071	TDZE 3071
-----------	-----------

CATEGORY	A	B	C	D
LPV DA	3321-1 250 (300-1)			NA
LNAV/VNAV DA	3453-1 1/4 382 (400-1 1/4)			NA
LNAV MDA	3460-1	389 (400-1)	3460-1 1/8 389 (400-1 1/8)	NA
C CIRCLING	3740-1	669 (700-1)	3900-2 1/2 829 (900-2 1/2)	NA



ULYSSES, KANSAS
 Amdt 2A 06OCT22

37°36'N-101°22'W

ULYSSES (ULS) RNAV (GPS) RWY 12