

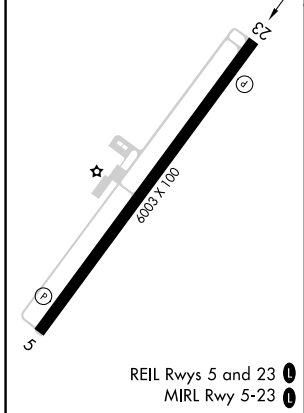
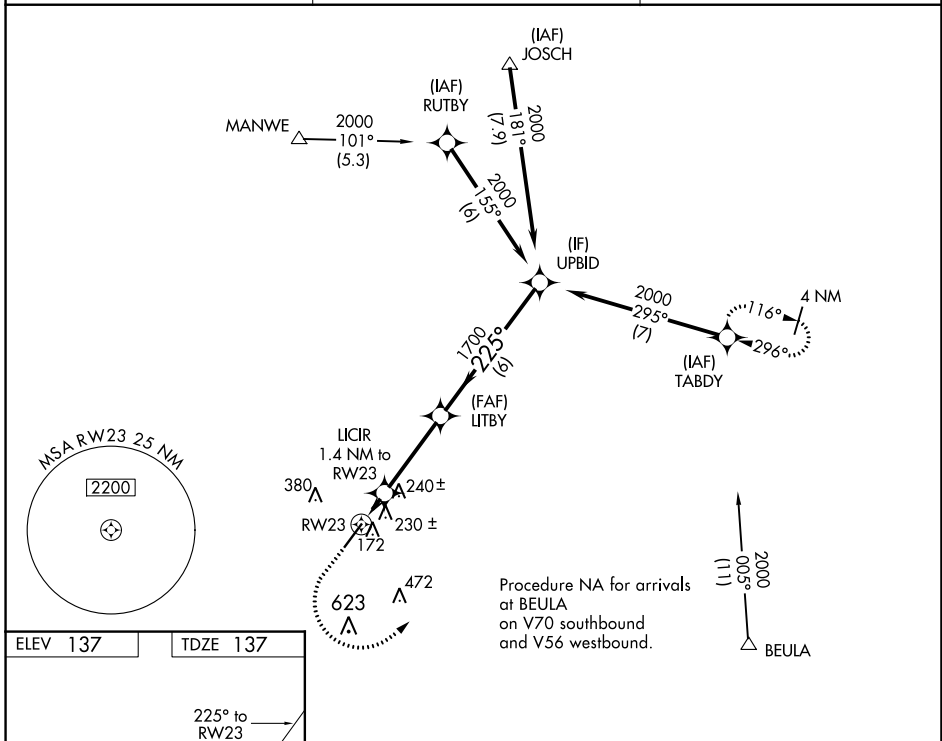
WAAS CH 69521 W23A	APP CRS 225°	Rwy Idg TDZE Apt Elev	6003 137 137
--	------------------------	-----------------------------	---

RNAV (GPS) RWY 23

DUPLIN COUNTY (DPL)

RNP APCH. ⚠ For uncompensated Baro-VNAV systems, LNAV/VNAV NA below -15°C or above 54°C.	MISSED APPROACH: Climb to 1000 then climbing left turn to 2000 direct TABDY and hold.
---	---

AWOS-3 120.675	SEYMOUR JOHNSON APP CON★ 119.7 273.6	UNICOM 123.0 (CTAF) ①
--------------------------	--	---------------------------------



1000	2000	TABDY				
*LNAV only.		LITBY	UPBID			
RWY 23		LICIR	225°			
1.4 NM to RWY 23		1700	2000			
*620		1700		GP 3.00°		
				TCH 43		
		-1.4 NM		3.4 NM		
				6 NM		
CATEGORY	A	B	C	D		
LPV DA	DA	337- ³ / ₄		200 (200- ³ / ₄)		
LNAV/VNAV DA	DA	407- ⁷ / ₈		270 (300- ⁷ / ₈)		
LNAV MDA	MDA	480-1		343 (400-1)		

SE-2, 11 JUL 2024 to 08 AUG 2024

SE-2, 11 JUL 2024 to 08 AUG 2024