

APP CRS	Rwy Idg	2812
218°	TDZE	538
	Apt Elev	538

RNAV (GPS) RWY 22

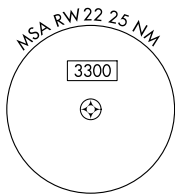
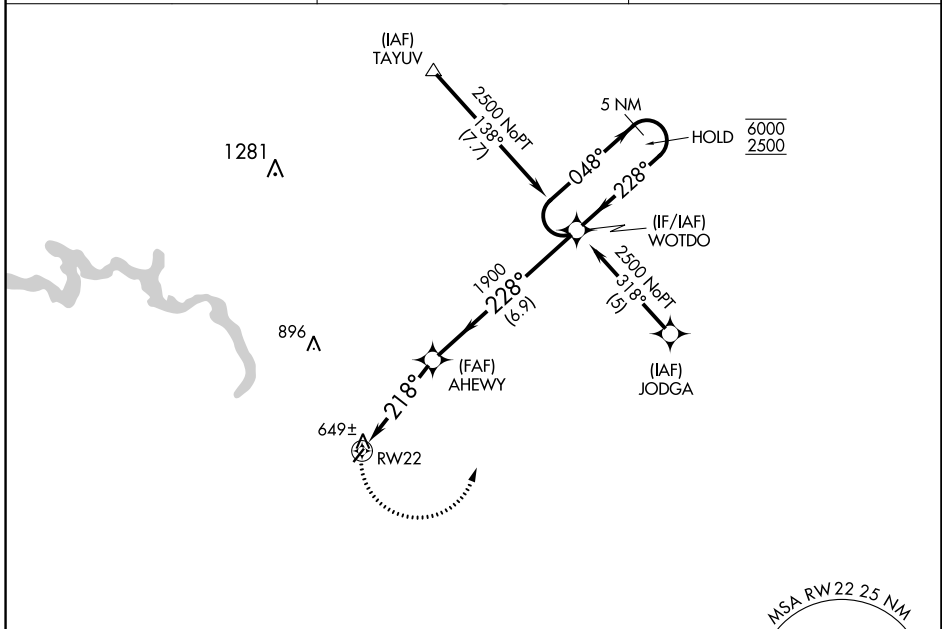
MALVERN MUNI (M78)

RNP APCH - GPS.

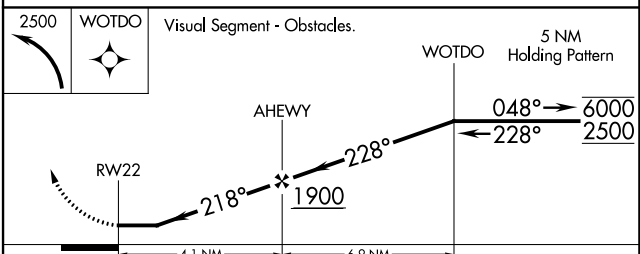
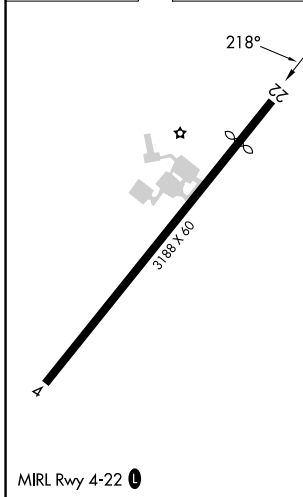
▼ Rwy 22 helicopter visibility reduction below 1 SM NA. Use Hot Springs altimeter setting; when not received use Bill and Hillary Clinton Nil/Adams Fld altimeter setting and increase all MDAs 80 feet. Procedure NA at night.
▲ NA

MISSED APPROACH: Climbing left turn to 2500 direct WOTDO and hold.

HOT ASOS 119.925	MEMPHIS CENTER 128.475 377.15	UNICOM 122.8(CTAF) 0
----------------------------	---	--------------------------------



ELEV 538	TDZE 538
----------	----------



CATEGORY	A	B	C	D
LNAV MDA	960-1	422 (500-1)	NA	
CIRCLING	1000-1 462 (500-1)	1080-1 542 (600-1)	NA	

SC-1, 11 JUL 2024 to 08 AUG 2024

SC-1, 11 JUL 2024 to 08 AUG 2024