

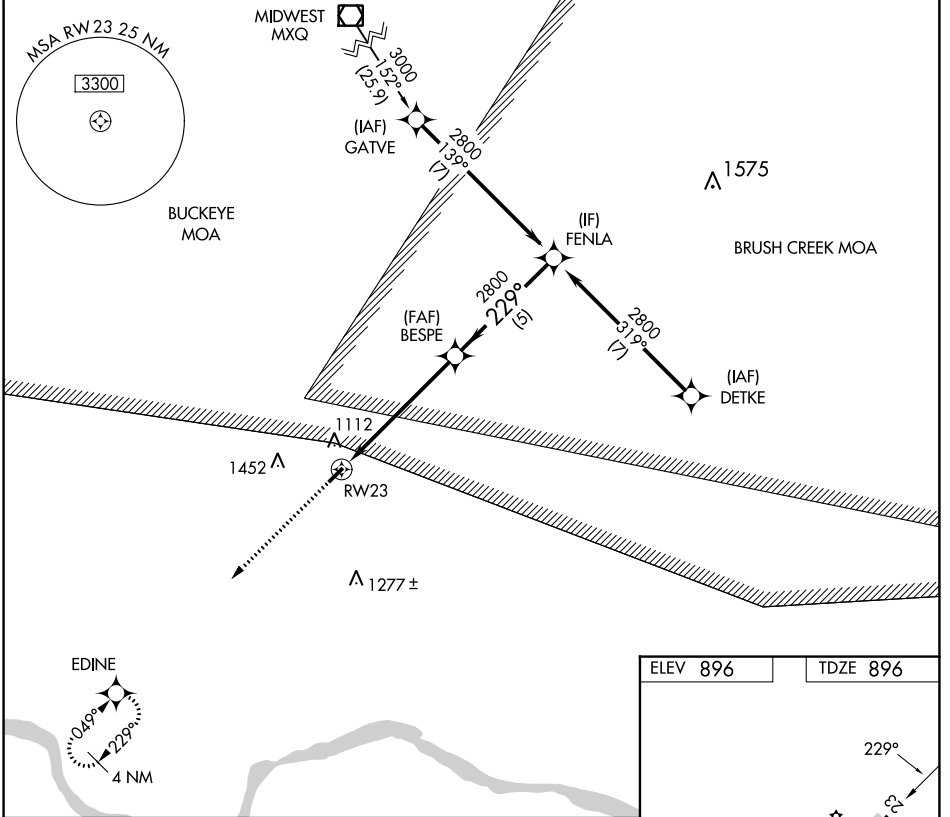
APP CRS	Rwy Idg	3558
229°	TDZE	896
	Apt Elev	896

RNAV (GPS) RWY 23

ALEXANDER SALAMON (A.M.T.)

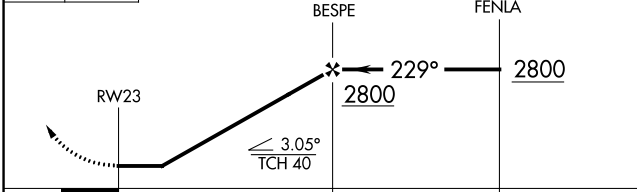
RNP APCH - GPS.	Procedure NA at night. Rwy 23 helicopter visibility reduction below 1 SM NA. Use Flemingsburg, Kentucky altimeter setting.	MISSED APPROACH: Climb to 2800 direct EDINE and hold.
-----------------	---	---

FGX AWOS-3 118.125	INDIANAPOLIS CENTER 135.575 290.5	UNICOM 122.8 (CTAF) 0
------------------------------	---	---------------------------------



2800 EDINE

VGSI and descent angles not coincident (VGSI Angle 3.30/TCH 25).



ELEV 896	TDZE 896
----------	----------

229°

3558 X 65

0.3% UP

REIL Rwy 5 and 23 0

MIRL Rwy 5-23 0

CATEGORY	A	B	C	D
LNAV MDA	1460-1	564 (600-1)	1460-1½ 564 (600-1½)	NA

EC-2, 11 JUL 2024 to 08 AUG 2024

EC-2, 11 JUL 2024 to 08 AUG 2024