

VORTAC BDF 114.7 Chan 94	APP CRS 133°	Rwy Idg 4003 TDZE 564 Apt Elev 585
--	------------------------	---

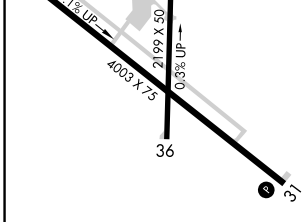
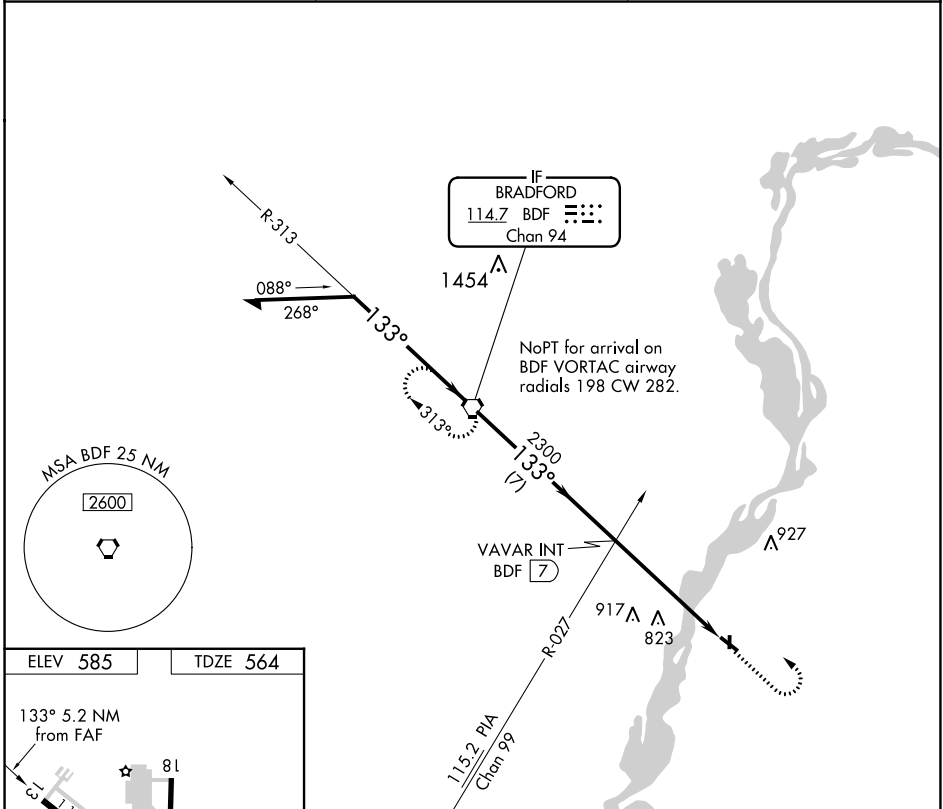
VOR RWY 13

MARSHALL COUNTY (C75)

⚠ Circling to Rwy 31, 36 NA at night.
⚠ Rwy 13 helicopter visibility reduction below ¾ SM NA.

MISSED APPROACH: Climb to 1500, then climbing left turn to 2500 direct BDF VORTAC and hold.

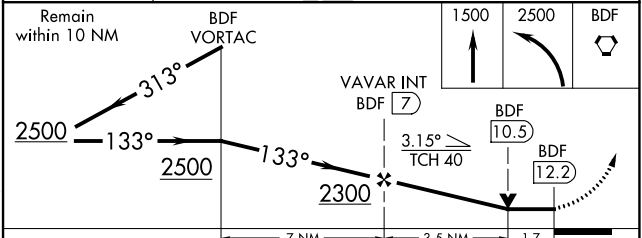
AWOS-3 119.425	CHICAGO CENTER 124.55 307.125	UNICOM 122.8 (CTAF) 0
--------------------------	---	---------------------------------



REIL Rwy 13 **0**
 MIRL Rwy 13-31 **0**
 LIRL Rwy 18-36

FAF to MAP 5.2 NM

Knots	60	90	120	150	180
Min:Sec	5:12	3:28	2:36	2:05	1:44



CATEGORY	A	B	C	D
S-13	1140-1	576 (600-1)	1140-1½ 576 (600-1½)	NA
CIRCLING	1140-1	555 (600-1)	1200-1¾ 615 (700-1¾)	NA

EC-3, 11 JUL 2024 to 08 AUG 2024

EC-3, 11 JUL 2024 to 08 AUG 2024