

WAAS CH <b>87034</b> <b>W20A</b>	APP CRS <b>203°</b>	Rwy Idg TDZE Apt Elev	<b>5000</b> <b>812</b> <b>812</b>
--	------------------------	-----------------------------	---

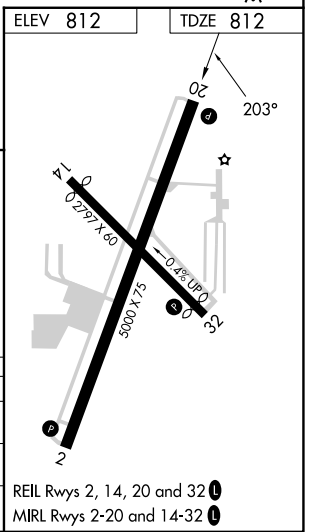
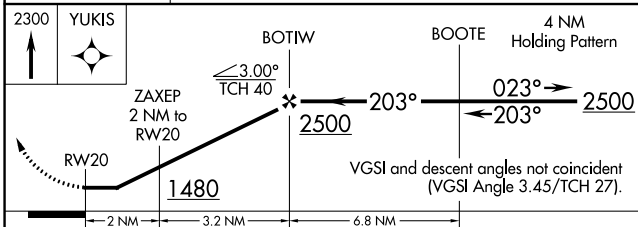
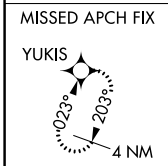
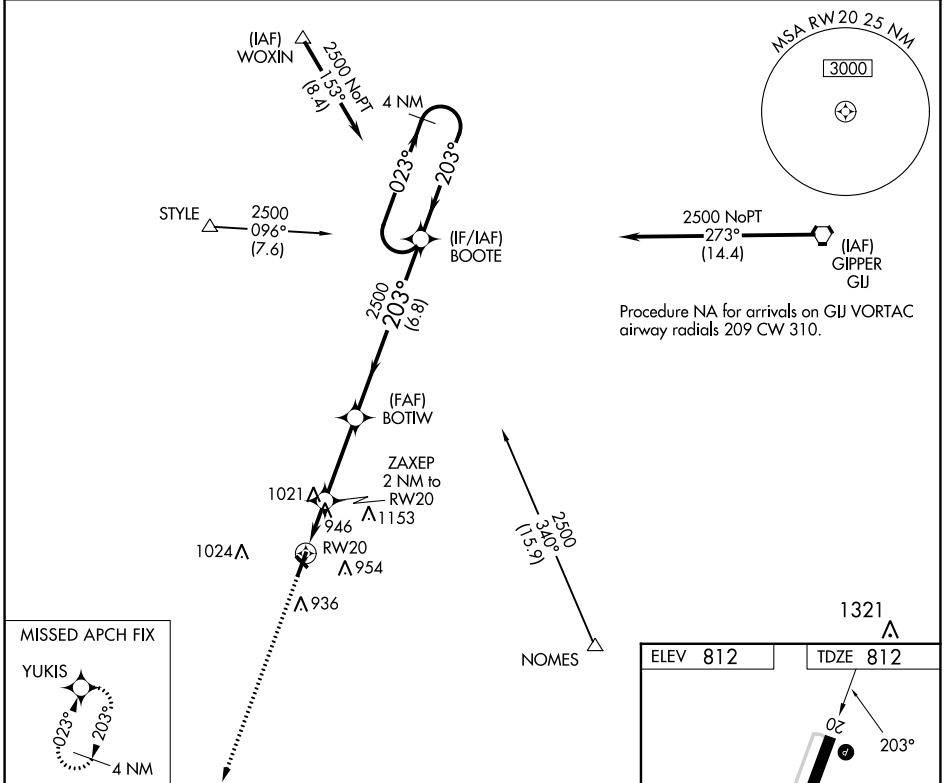
# RNAV (GPS) RWY 20

LA PORTE MUNI (PPO)

**⚠** DME/DME RNP-0.3 NA. When local altimeter setting not received, use South Bend altimeter setting and increase all MDA 60 feet; increase LP Cat C/D and LNAV Cat C/D visibility 1/8 mile. Helicopter visibility reduction below 3/4 SM NA. Circling Rwy 14, 32 NA at night.

**⚠** MISSED APPROACH: Climb to 2300 direct YUKIS and hold.

AWOS-3PT <b>119.825</b>	SOUTH BEND APP CON ★ <b>132.05 257.8</b>	UNICOM <b>123.0</b> (CTAF) <b>📻</b>
----------------------------	---	--



CATEGORY	A	B	C	D
LP MDA	1200-1	388 (400-1)	1200-1 1/8	388 (400-1 1/8)
LNAV MDA	1280-1	468 (500-1)	1280-1 3/8	468 (500-1 3/8)
<b>📻</b> CIRCLING	1320-1	508 (600-1)	1560-2 1/4 748 (800-2 1/4)	1560-2 1/2 748 (800-2 1/2)

EC-2, 11 JUL 2024 to 08 AUG 2024

EC-2, 11 JUL 2024 to 08 AUG 2024