

VORTAC OKW 111.0 Chan 47	APP CRS 076°	Rwy Idg TDZE Apt Elev	6007 700 700
---------------------------------------	------------------------	-----------------------------	---

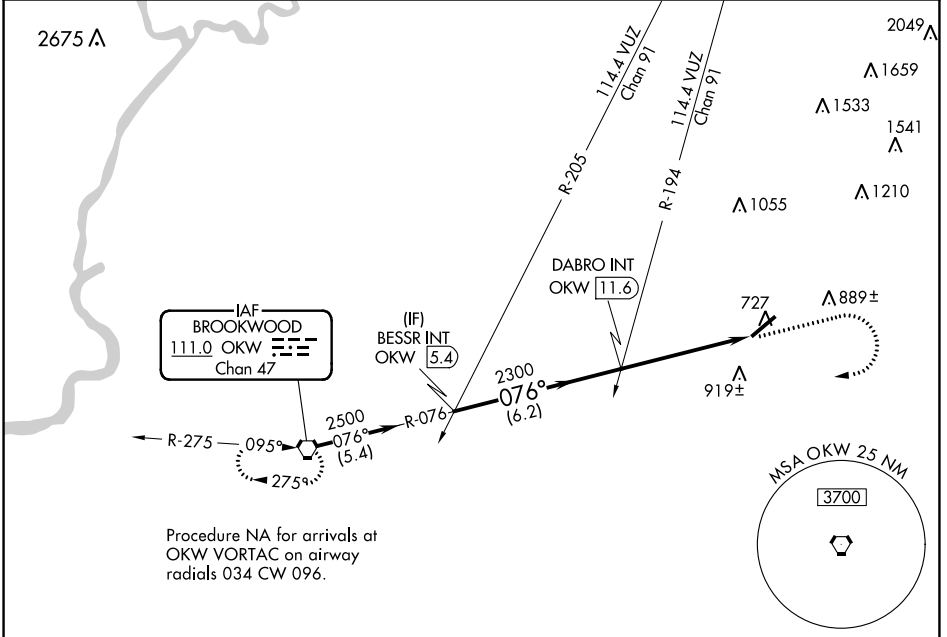
VOR RWY 5

BESSEMER (EKY)

NA Inoperative table does not apply. When local altimeter setting not received, use Alabaster altimeter setting and increase all MDAs 60 feet; increase S-5 Cat C visibility 1/8 SM and Circling Cat D visibility 1/4 SM.

MISSED APPROACH: Climb to 1500 then climbing right turn to 3000 direct OKW VORTAC and hold.

AWOS-3PT 118.825	BIRMINGHAM APP CON 124.9 351.85	CLNC DEL 123.75	UNICOM 123.0 (CTAF)
----------------------------	---	---------------------------	-------------------------------

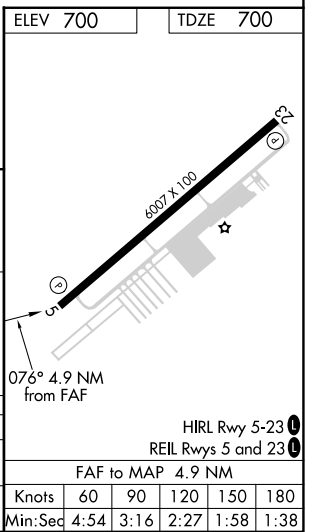
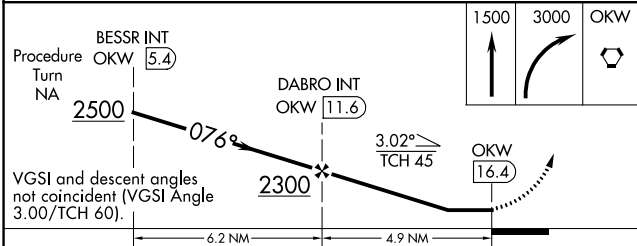


SE-4, 11 JUL 2024 to 08 AUG 2024

SE-4, 11 JUL 2024 to 08 AUG 2024

Procedure NA for arrivals at OKW VORTAC on airway radials 034 CW 096.

ELEV 700	TDZE 700
----------	----------



CATEGORY	A	B	C	D
S-5	1180-1 480 (500-1)		1180-1 3/8 480 (500-1 3/8)	1180-1 1/2 480 (500-1 1/2)
CIRCLING	1200-1 500 (500-1)		1220-1 1/2 520 (600-1 1/2)	1320-2 620 (700-2)

FAF to MAP 4.9 NM					
Knots	60	90	120	150	180
Min:Sed	4:54	3:16	2:27	1:58	1:38