

| | | |
|---------|----------|-----|
| APP CRS | Rwy Idg | N/A |
| 012° | TDZE | N/A |
| | Apt Elev | 841 |

RNAV (GPS)-A

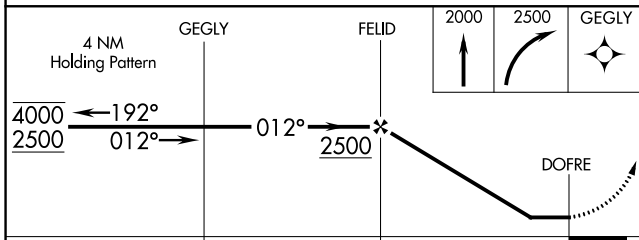
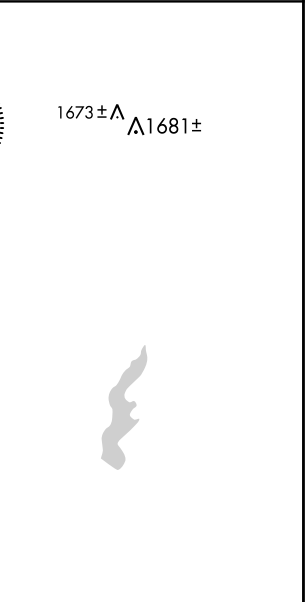
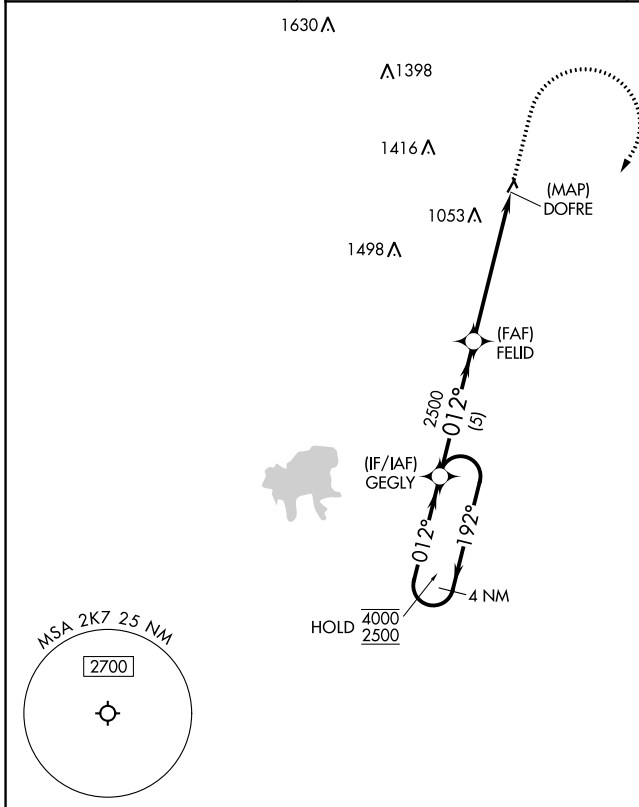
NEODESHA MUNI (2K7)

RNP APCH - GPS.

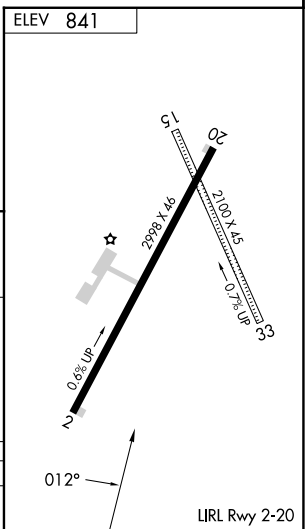
V
ΔNA Circling NA to Rwy 15 and 33. Circling Rwy 20 NA at night. Rwy 20 helicopter visibility reduction below 1 SM NA. Use Chanute altimeter setting; when not received, use Joplin altimeter setting and increase MDAs 100 feet.

MISSED APPROACH: Climb to 2000 then climbing right turn to 2500 direct GEGLY and hold.

| | | |
|----------------------------|--|-------------------------------|
| CNU ASOS 127.075 | KANSAS CITY CENTER 132.9 279.5 | UNICOM 122.8 (CTAF) |
|----------------------------|--|-------------------------------|



| | | | | |
|----------|--------|-------------|----|---|
| CATEGORY | A | B | C | D |
| CIRCLING | 1500-1 | 659 (700-1) | NA | |



NC-2, 11 JUL 2024 to 08 AUG 2024

NC-2, 11 JUL 2024 to 08 AUG 2024