

WAAS CH <b>50333</b> <b>W01A</b>	APP CRS <b>013°</b>	Rwy Idg TDZE Apt Elev	<b>3200</b> <b>857</b> <b>858</b>
--	------------------------	-----------------------------	---

# RNAV (GPS) RWY 1

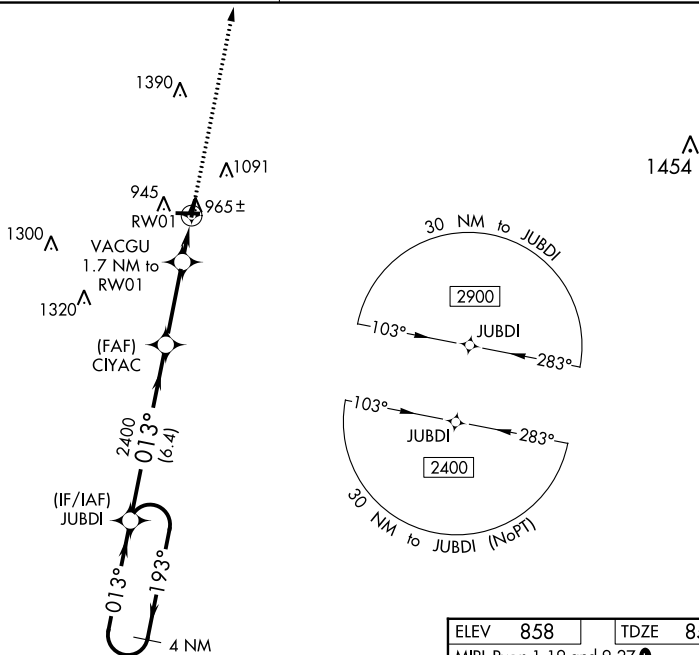
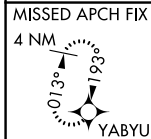
KEWANEE MUNI (EZI)

**NA** Baro-VNAV NA. DME/DME RNP-0.3 NA. Helicopter visibility reduction below  $\frac{3}{4}$  SM NA. Use Galesburg altimeter setting; when not received, use Moline altimeter setting and increase all DA 29 feet and all MDA 40 feet, increase LPV all Cats visibility  $\frac{1}{8}$  mile, and Circling Cat C visibility  $\frac{1}{4}$  mile.

**MISSED APPROACH:**  
Climb to 2400 direct YABYU and hold.

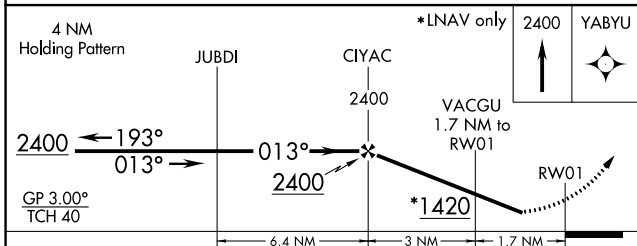
QUAD CITY APP CON ★  
**133.275 257.8**

UNICOM  
**122.8 (CTAF) 0**

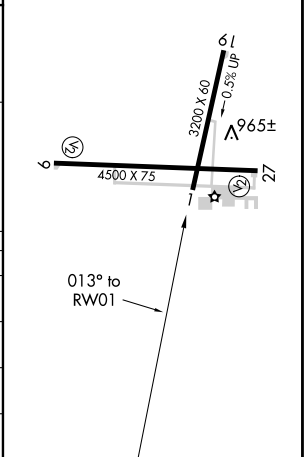


EC-3, 11 JUL 2024 to 08 AUG 2024

EC-3, 11 JUL 2024 to 08 AUG 2024



ELEV 858	TDZE 857
MIRL Rwys 1-19 and 9-27 0	



CATEGORY	A	B	C	D
LPV DA	1182-1 $\frac{1}{8}$	325 (400-1 $\frac{1}{8}$ )		NA
LNNAV/VNAV DA	1212-1 $\frac{1}{4}$	355 (400-1 $\frac{1}{4}$ )		NA
LNNAV MDA	1300-1	443 (500-1)	1300-1 $\frac{3}{8}$ 443 (500-1 $\frac{3}{8}$ )	NA
<b>C</b> CIRCLING	1340-1 482 (500-1)	1520-1 662 (700-1)	1520-1 $\frac{3}{4}$ 662 (700-1 $\frac{3}{4}$ )	NA