

WAAS CH <b>97533</b> <b>W19A</b>	APP CRS <b>193°</b>	Rwy Idg TDZE Apt Elev	<b>3200</b> <b>857</b> <b>858</b>
--	------------------------	-----------------------------	---

# RNAV (GPS) RWY 19

KEWANEE MUNI (EZI)

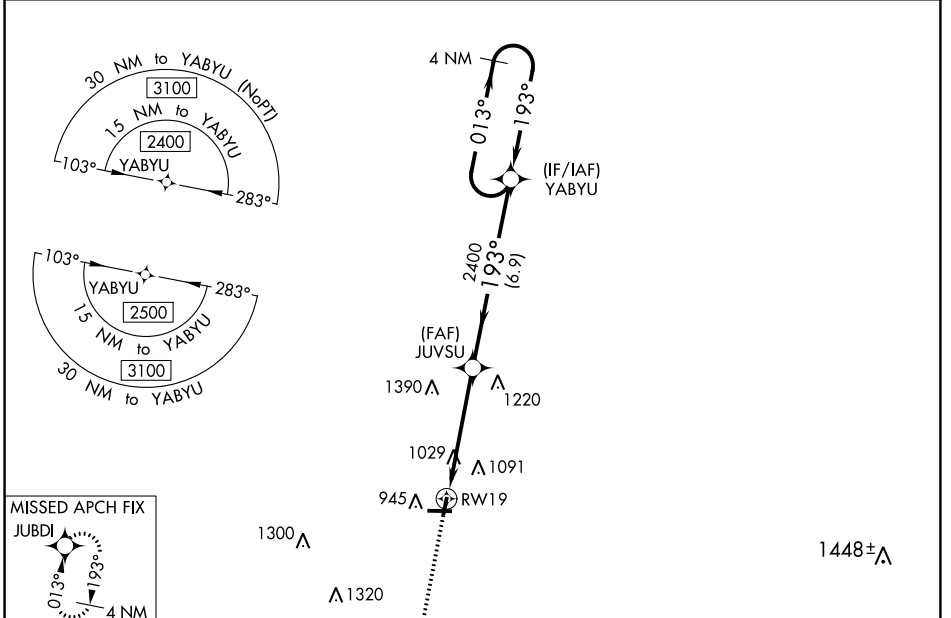
RNP APCH - GPS.

**NA** Baro-VNAV NA. Use Galesburg altimeter setting. When local altimeter setting not received, use Moline altimeter setting and increase LPV DA to 1212 feet; increase LNAV/VNAV DA to 1446 feet and all visibilities  $\frac{1}{8}$  SM. Increase all MDAs 40 feet and LNAV visibility Cat C  $\frac{1}{8}$  SM, and Circling visibility Cat C  $\frac{1}{4}$ .

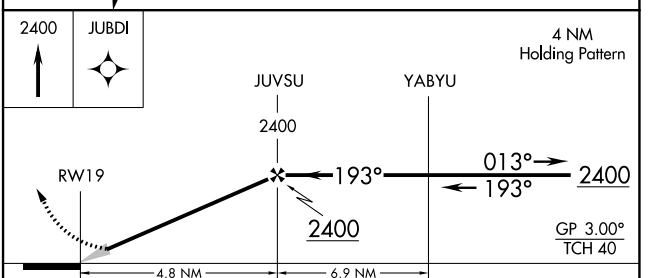
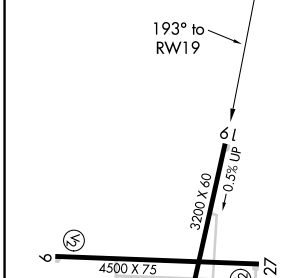
MISSED APPROACH:  
Climb to 2400 direct JUBDI and hold.

QUAD CITY APP CON ★ **133.275 257.8**

UNICOM **122.8 (CTAF) 1**



ELEV 858 TDZE 857



CATEGORY	A	B	C	D
LPV DA	1182-1 325 (400-1)			NA
LNAV/VNAV DA	1416-1 $\frac{5}{8}$ 559 (600-1 $\frac{5}{8}$ )			NA
LNAV MDA	1400-1	543 (600-1)	1400-1 $\frac{5}{8}$ 543 (600-1 $\frac{5}{8}$ )	NA
<b>CIRCLING</b>	1400-1 542 (600-1)	1520-1 662 (700-1)	1520-1 $\frac{3}{4}$ 662 (700-1 $\frac{3}{4}$ )	NA

EC-3, 11 JUL 2024 to 08 AUG 2024

EC-3, 11 JUL 2024 to 08 AUG 2024