

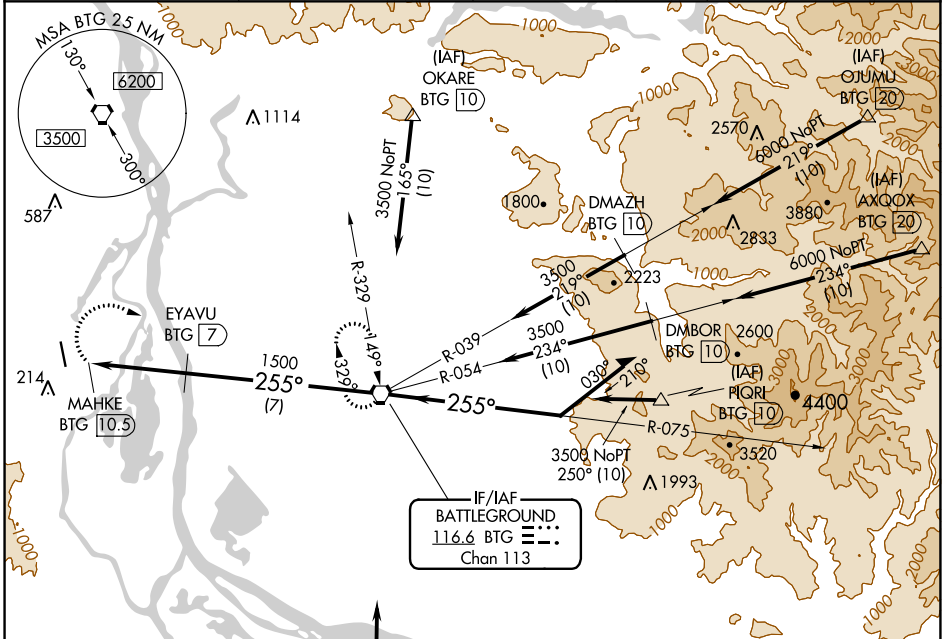
VORTAC BTG 116.6 Chan 113	APP CRS 255°	Rwy Idg TDZE Apt Elev 58	N/A N/A 58
---	------------------------	---------------------------------------	-------------------------

VOR/DME-A SCAPOOSE (SPB)

⚠ Circling to Rwy 15 NA at night. Circling NA west of Rwy 15-33. When local altimeter setting not received, use Portland Intl altimeter setting; increase all MDAs 40 feet. Increase Circling Cat D visibility ¼ SM.

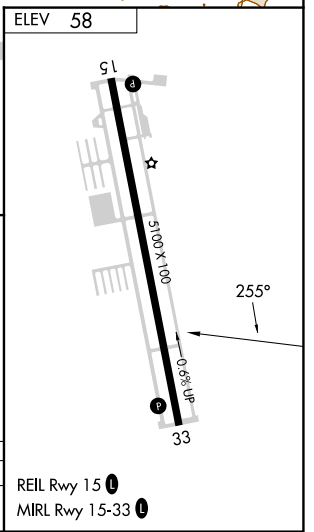
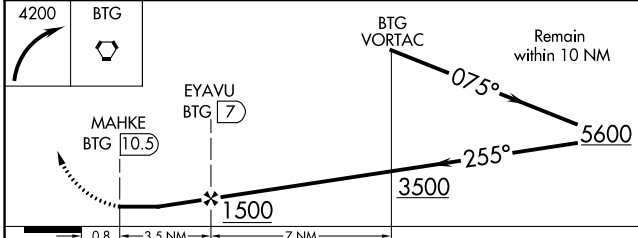
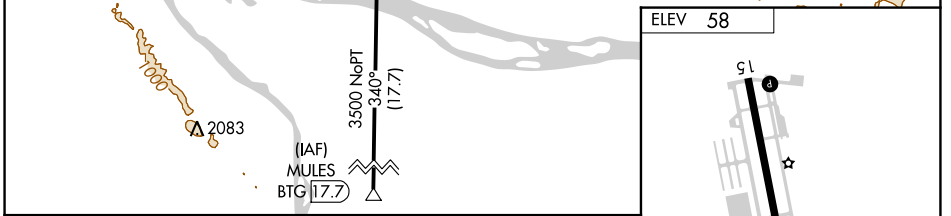
⚠ MISSED APPROACH: Climbing right turn to 4200 direct BTG VORTAC and hold, continue climb-in-hold to 4200.

ASOS 135.875	PORTLAND APP CON 124.35 299.2	CLNC DEL 121.65	UNICOM 122.8 (CTAF) 📻
------------------------	---	---------------------------	--



NW-1, 11 JUL 2024 to 08 AUG 2024

NW-1, 11 JUL 2024 to 08 AUG 2024



CATEGORY	A	B	C	D
CIRCLING	660-1 602 (700-1)		660-1¾ 602 (700-1¾)	860-2½ 802 (900-2½)

REIL Rwy 15 **📻**
MIRL Rwy 15-33 **📻**