

APP CRS	Rwy Idg	<b>3900</b>
<b>269°</b>	TDZE	<b>691</b>
	Apt Elev	<b>691</b>

# RNAV (GPS) RWY 27

LITCHFIELD MUNI (3L1F)

RNP APCH - GPS.

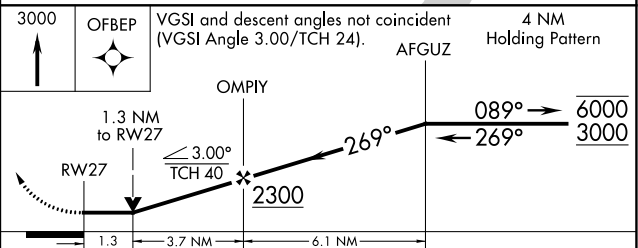
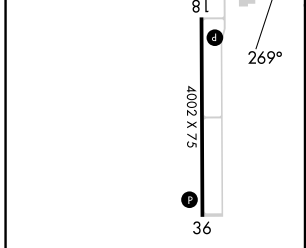
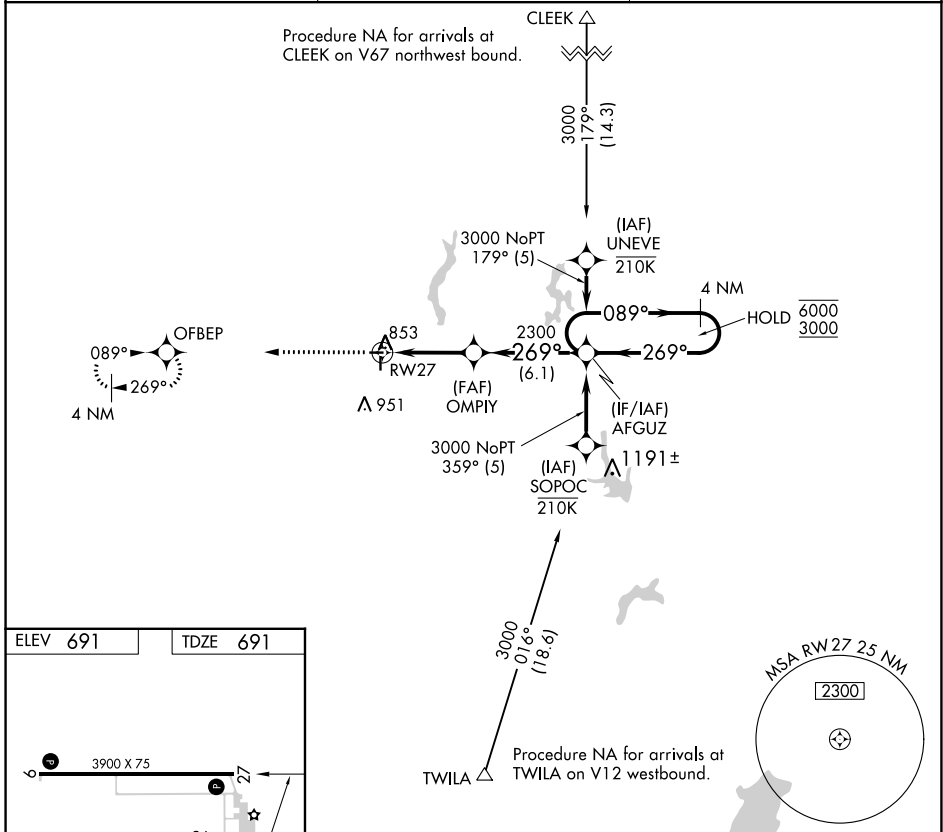
**⚠** Rwy 27 helicopter visibility reduction below 3/4 SM NA. When local altimeter setting not received, use Taylorville altimeter setting and increase all MDA 80 feet and LNAV Cat C visibility 1/8 SM. VDP NA when using Taylorville altimeter setting.

MISSED APPROACH: Climb to 3000 direct OFBEP and hold.

AWOS-3PT  
**118.175**

ST. LOUIS APP CON  
**124.2 353.9**

UNICOM  
**122.8 (CTAF) 0**



MIRL Rwy 9-27 and 18-36 **0**

REIL Rwy 9, 18, 27 and 36 **0**

CATEGORY	A	B	C	D
LNAV MDA	1120-1	429 (500-1)	1120-1 1/4 429 (500-1 1/4)	NA

EC-3, 11 JUL 2024 to 08 AUG 2024

EC-3, 11 JUL 2024 to 08 AUG 2024