

GARLAND FIVE DEPARTURE  
(GARLS.TT) 251ANZA

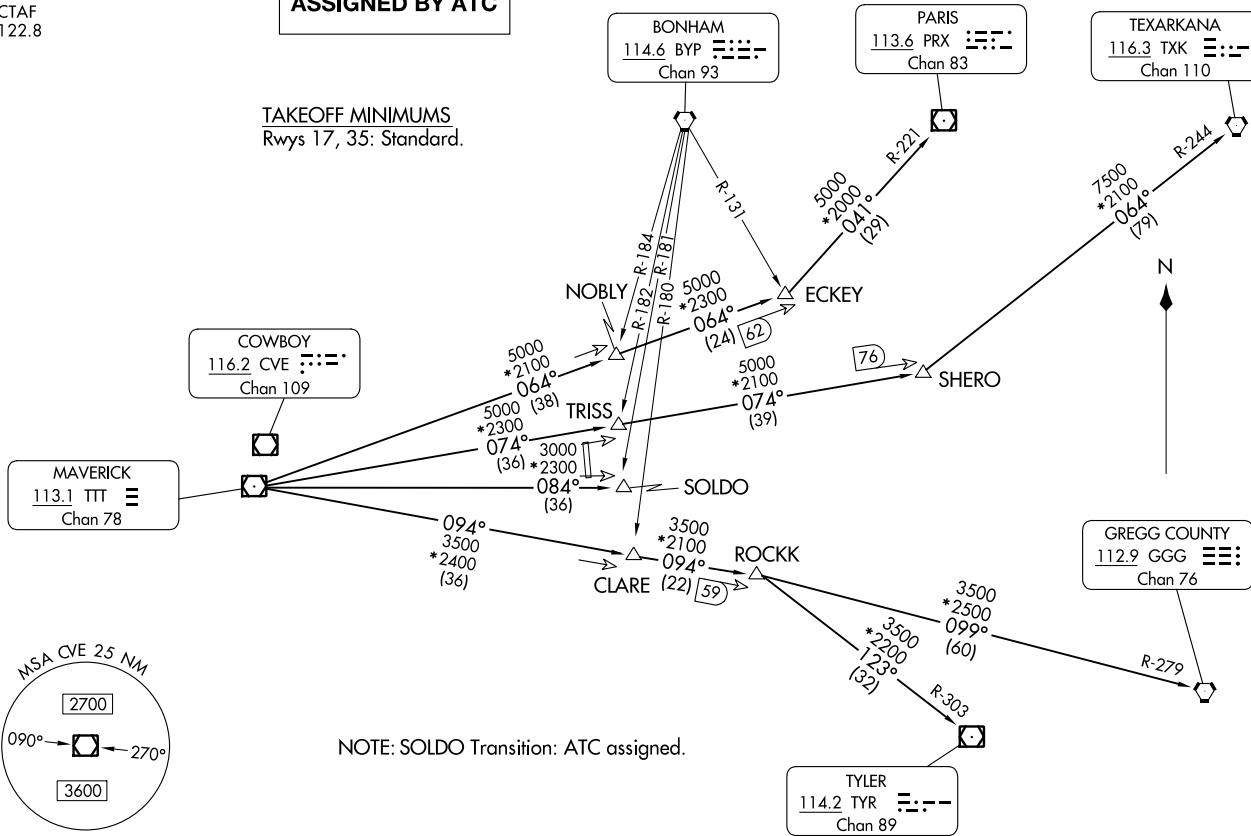
ROCKWALL, TEXAS  
RALPH M HALL/ROCKWALL MUNI (F46)

REGIONAL DEP CON  
125.2 343.65  
CTAF  
122.8

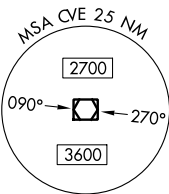
**TOP ALTITUDE:  
ASSIGNED BY ATC**

RADAR and DME required.

TAKEOFF MINIMUMS  
Rwys 17, 35: Standard.



NOTE: SOLDO Transition: ATC assigned.



NOTE: Chart not to scale.

(CONTINUED ON FOLLOWING PAGE)

(GARLS.TT) 24025  
GARLAND FIVE DEPARTURE

AL-6323 (FAA)

ROCKWALL, TEXAS  
RALPH M HALL/ROCKWALL MUNI (F46)

# GARLAND FIVE DEPARTURE



## DEPARTURE ROUTE DESCRIPTION

When entering controlled airspace, fly assigned heading for RADAR vectors to appropriate route. Maintain ATC assigned altitude.

GREGG COUNTY TRANSITION (GARL5.GGG): From over TTT VOR/DME on TTT R-094 to ROCKK, then on GGG R-279 to GGG VORTAC.

PARIS TRANSITION (GARL5.PRX): From over TTT VOR/DME on TTT R-064 to ECKEY, then on PRX R-221 to PRX VOR/DME.

SOLDO TRANSITION (GARL5.SOLDO): From over TTT VOR/DME on TTT R-084 to SOLDO.

TEXARKANA TRANSITION (GARL5.TXK): From over TTT VOR/DME on TTT R-074 to SHERO, then on TXK R-244 to TXK VORTAC.

TYLER TRANSITION (GARL5.TYR): From over TTT VOR/DME on TTT R-094 to ROCKK, then on TYR R-303 to TYR VOR/DME.

SC-2, 11 JUL 2024 to 08 AUG 2024

SC-2, 11 JUL 2024 to 08 AUG 2024