

VOR OZB 109.0	APP CRS 287°	Rwy Idg TDZE Apt Elev N/A N/A 2559
-------------------------	------------------------	--

VOR-A

GOTHENBURG MUNI (GTE)

NA Circling NA to Rwys 14 and 32. Procedure NA at night. Use Lexington altimeter setting; when not received, use North Platte altimeter setting and increase all MDA 40 feet.

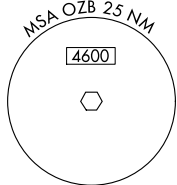
MISSED APPROACH: Climbing right turn to 4300 direct OZB VOR and hold.

LXN AWOS-3
121.025

DENVER CENTER
132.7 226.675

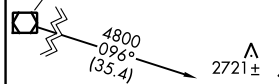
UNICOM
122.8 (CTAF)

Procedure NA for arrival on LBF VOR/DME airway radials 062 CW 080.



NORTH PLATTE
117.4 LBF Chan 121

A 2919



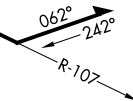
A 2721±



Procedure NA for arrivals at EAR VOR on V220 northeast bound.

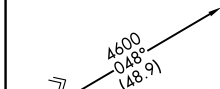
KEARNEY
111.2 EAR

IAF
COZAD
109.0 OZB



NC-2, 11 JUL 2024 to 08 AUG 2024

NC-2, 11 JUL 2024 to 08 AUG 2024

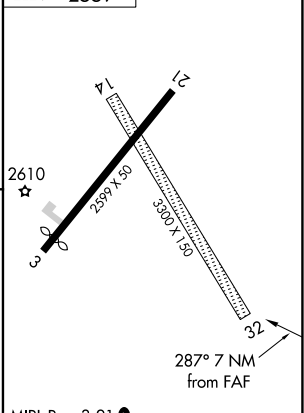


Procedure NA for arrival on HCT VORTAC airway radials 048 CW 063.

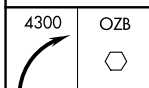
HAYES CENTER
117.7 HCT Chan 124

A 3221

ELEV 2559

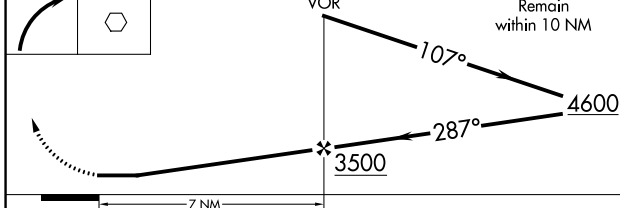


MIRL Rwy 3-21



OZB

OZB VOR Remain within 10 NM



CATEGORY	A	B	C	D
CIRCLING	3120-1 561 (600-1)	3180-1 621 (700-1)	NA	

FAF to MAP 7 NM					
Knots	60	90	120	150	180
Min:Sec	7:00	4:40	3:30	2:48	2:20

VOR-A