

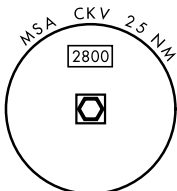
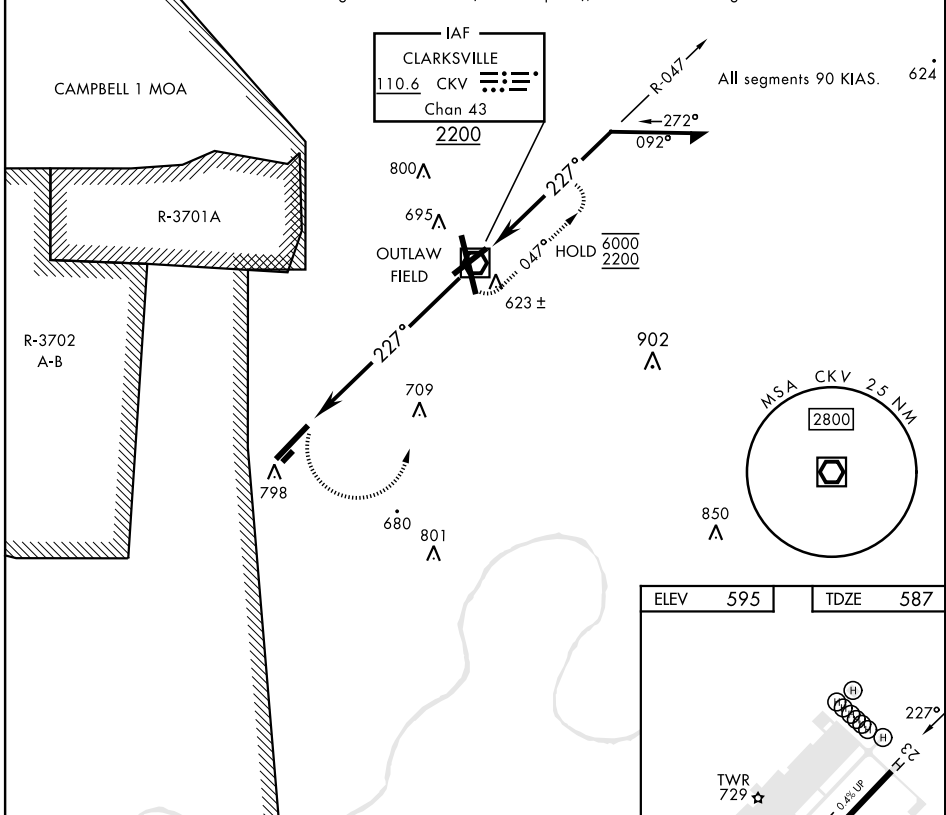
# COPTER VOR RWY 23

VOR/DME CKV <b>110.6</b> Chan <b>43</b>	APCH CRS <b>227°</b>	Rwy Idg TDZE Arprt Elev <b>5000</b> <b>587</b> <b>595</b>	AL-6373 [USA]	SABRE AAF (FORT CAMPBELL) (KEOD)
---	-------------------------	--	---------------	----------------------------------

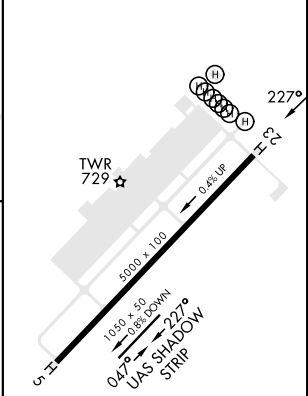
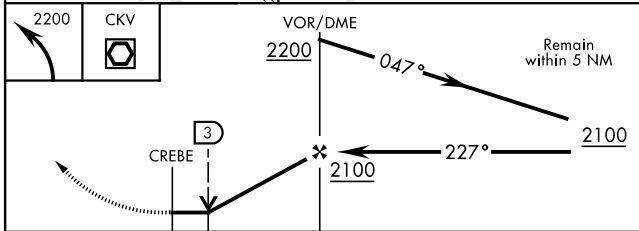
RADAR required		MISSED APPROACH: Climbing left turn to 2200 direct CKV VOR/DME and hold.		
----------------	--	--	--	--

ATIS <b>306.5</b>	CAMPBELL APP CON <b>134.35 307.025</b>	TOWER ★ <b>124.675 (CTAF) 290.45</b>	GND CON <b>142.975 267.3</b>	CLNC DEL <b>237.6</b>	EAGLE RADIO <b>285.7</b>	ASR
----------------------	---	---	---------------------------------	--------------------------	-----------------------------	-----

When local altimeter setting not received, use Campbell AAF (Fort Campbell), KY altimeter setting.  
VDP NA when using CAMPBELL AAF (Fort Campbell), KY altimeter setting.



ELEV	595	TDZE	587
------	-----	------	-----



HIRL Rwy 5-23	FAF to MAP 4.2 NM					
	Knots	45	60	75	90	105
	Min:Sec	5:36	4:12	3:22	2:48	2:24

CATEGORY	COPTER				
H-23	1060-1	473	(500-1)		

# COPTER VOR RWY 23

SE-1, 11 JUL 2024 to 08 AUG 2024

SE-1, 11 JUL 2024 to 08 AUG 2024