

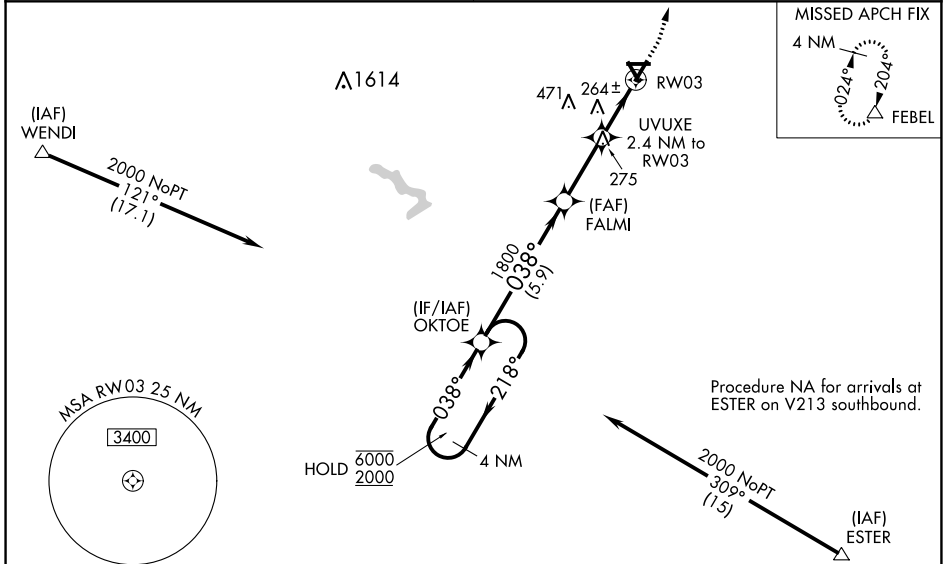
WAAS CH <b>69339</b> <b>W03A</b>	APP CRS <b>038°</b>	Rwy Idg TDZE <b>156</b> Apt Elev <b>160</b>	<b>4500</b>
--	------------------------	---	-------------

# RNAV (GPS) RWY 3

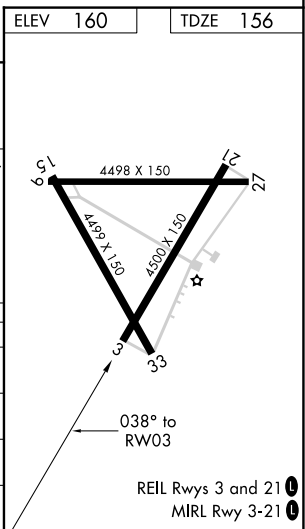
WILSON INDUSTRIAL AIR CENTER (W03)

RNP APCH.	<p>Baro-VNAV NA when using Rocky Mount altimeter setting. For uncompensated Baro-VNAV systems, LNAV/VNAV NA below -15°C or above 54°C. Obtain local altimeter setting on CTAF; when not received, use Rocky Mount altimeter setting: increase LPV DA to 421 and visibility all Cats ½ SM; increase LNAV/VNAV DA to 439; increase all MDA 20 feet and LNAV visibility Cats C and D ½ SM. Circling Rwy 9, 15, 27, 33 NA at night.</p>	<p>MISSED APPROACH: Climb to 700, then climbing left turn to 2500 direct FEBEL and hold.</p>
-----------	---	--

WASHINGTON CENTER <b>123.85 279.65</b>	UNICOM <b>123.0 (CTAF) 0</b>
---	---------------------------------



4 NM Holding Pattern		700	2500	FEBEL
OKTOE		*LNAV only.		
6000	← 218°	FALMI	1800	UVUXE 2.4 NM to RW03
2000	→ 038°	1800	→ 038°	RW03
GP 3.00°	TCH 40	5.9 NM	2.6 NM	2.4 NM
CATEGORY	A	B	C	D
LPV DA	406-¾		250 (300-¾)	
LNAV/VNAV DA	424-⅞		268 (300-⅞)	
LNAV MDA	520-1	364 (400-1)	520-1¾ 364 (400-1¾)	520-2 364 (400-2)
CIRCLING	660-1	500 (500-1)	780-1¾ 620 (700-1¾)	780-2 620 (700-2)



SE-2, 11 JUL 2024 to 08 AUG 2024

SE-2, 11 JUL 2024 to 08 AUG 2024