

VORTAC RBV 113.8 Chan 85	APP CRS 232°	Rwy Idg TDZE Apt Elev	3194 87 87
--	------------------------	-----------------------------	---------------------------------------

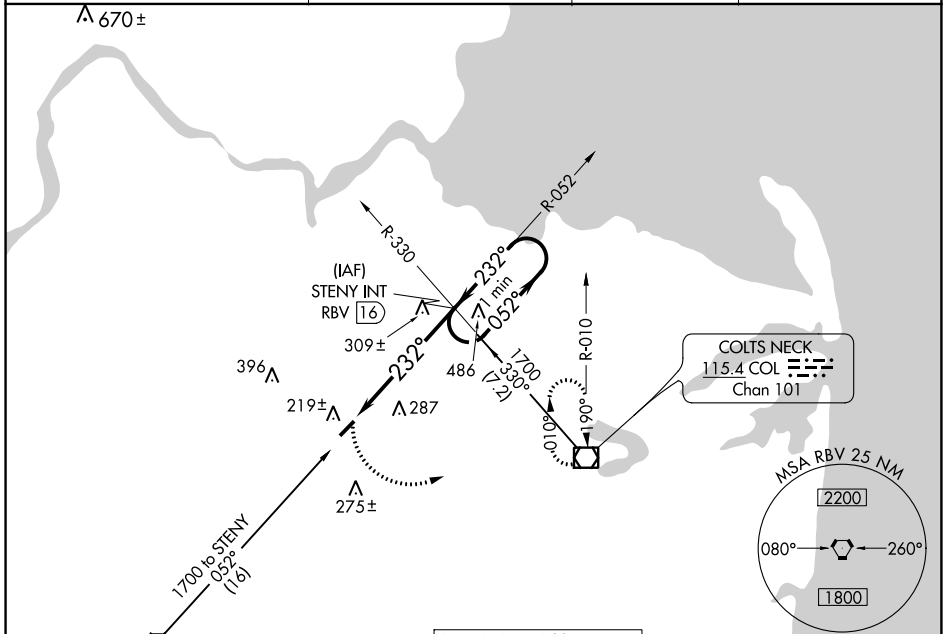
VOR RWY 24

OLD BRIDGE (3N6)

Procedure NA at night. Helicopter visibility reduction below 1 SM NA. Use Belmar/Farmingdale altimeter setting; when not received, use Wrightstown altimeter setting and increase all MDA 20 feet.

MISSED APPROACH: Climbing left turn to 2000 direct COL VOR/DME and hold.

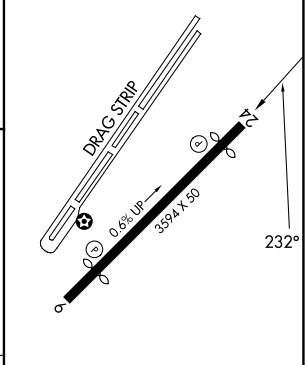
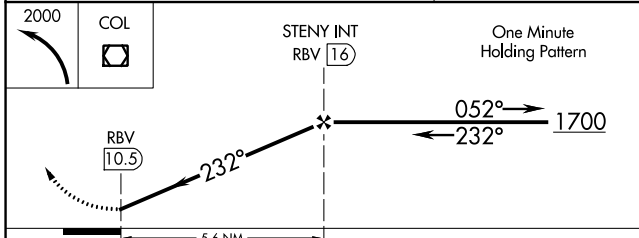
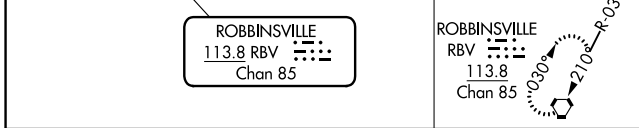
BLM AWOS-3PT 121.625	MC GUIRE APP CON 126.475 363.8	GCO 121.725	UNICOM 123.075 (CTAF)
--------------------------------	--	-----------------------	---------------------------------



NE-2, 11 JUL 2024 to 08 AUG 2024

NE-2, 11 JUL 2024 to 08 AUG 2024

ELEV 87	TDZE 87
---------	---------



CATEGORY	A	B	C	D
S-24	600-1	513 (600-1)	NA	
CIRCLING	620-1 533 (600-1)	640-1 553 (600-1)	NA	

REIL Rwy 6 and 24
MIRL Rwy 6-24

FAF to MAP 5.6 NM

Knots	60	90	120	150	180
Min:Sec	5:36	3:44	2:48	2:14	1:52