

APP CRS 124°	Rwy Idg 3005 TDZE 21 Apt Elev 21
------------------------	---

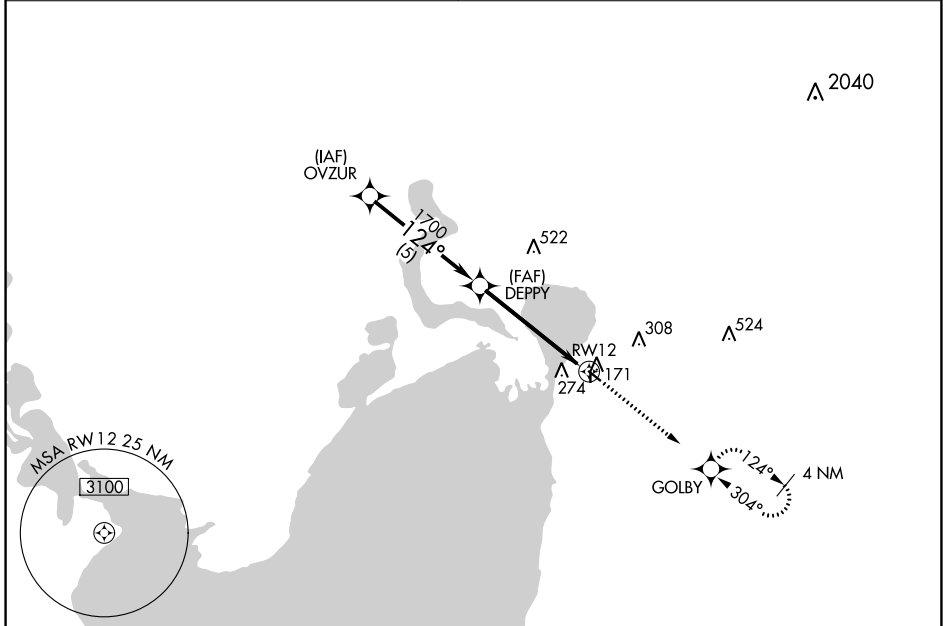
RNAV (GPS) RWY 12

CHAMBERS COUNTY (T00)

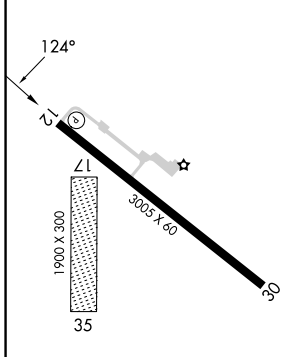
▼ RADAR required. Use William P Hobby altimeter setting. GPS or RNP-0.3 required.
▲ NA DME/DME RNP-0.3 NA. Procedure NA at night. Rwy 12 helicopter visibility reduction below 1 SM NA. Circling NA to Rwy 17 and 35.

MISSED APPROACH: Climb to 3000 direct GOLBY WP and hold.

HOUSTON APP CON 134.45 284.0	CTAF 122.9 0
--	------------------------



ELEV 21	TDZE 21
---------	---------



	OVZUR	DEPPY	RWY 12
Procedure Turn	NA		
	5 NM		5 NM

CATEGORY	A	B	C	D
LNAV MDA	560-1	539 (600-1)	560-1½ 539 (600-1½)	NA
CIRCLING	660-1	639 (700-1)	700-2 679 (700-2)	NA

MIRL Rwy 12-30
LIRL Rwy 12-30

SC-5, 11 JUL 2024 to 08 AUG 2024

SC-5, 11 JUL 2024 to 08 AUG 2024