

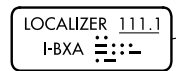
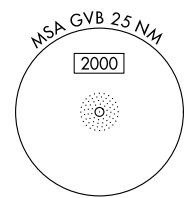
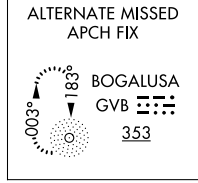
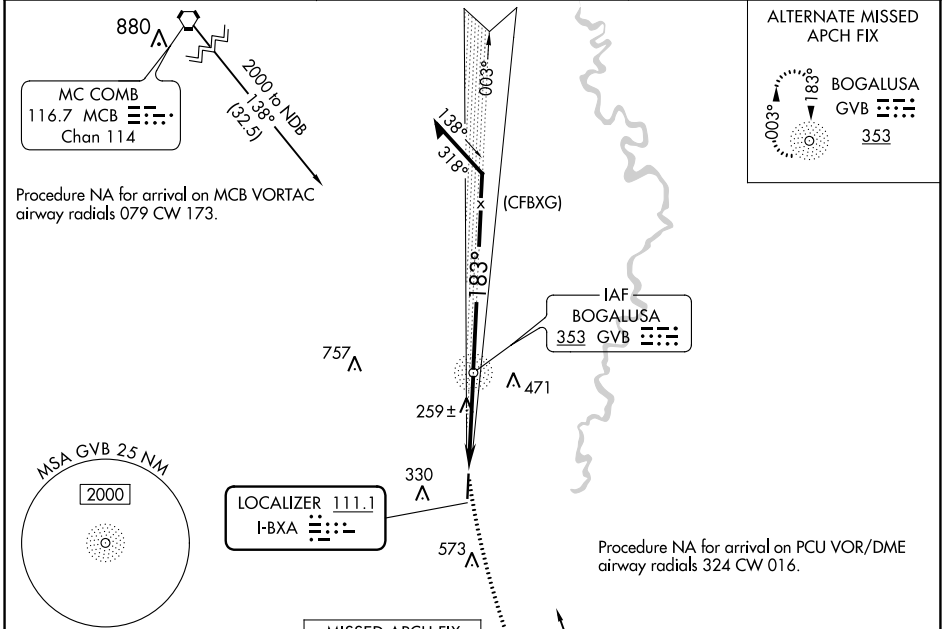
LOC I-BXA 111.1	APP CRS 183°	Rwy ldg TDZE Apt Elev	5002 119 119
---------------------------	------------------------	-----------------------------	---

LOC RWY 18

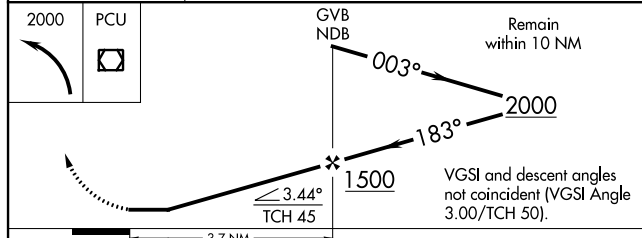
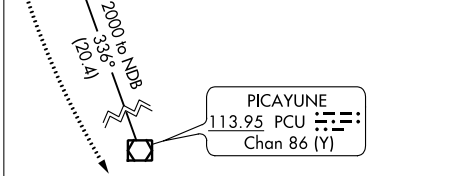
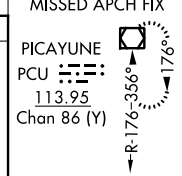
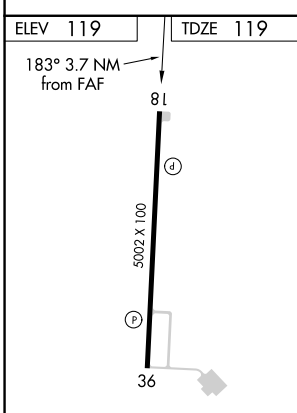
GEORGE R CARR MEML AIR FLD (BXA)

ADF required ▼ ▲	MISSED APPROACH: Climbing left turn to 2000 direct PCU VOR/DME and hold.
------------------------	--

AWOS-3PT 118.025	HOUSTON CENTER 126.8 327.8	UNICOM 122.8 (CTAF) 0
----------------------------	--------------------------------------	---------------------------------



Procedure NA for arrival on PCU VOR/DME airway radials 324 CW 016.



ELEV 119	TDZE 119
183° 3.7 NM from FAF	81
5002 X 100	36
REIL Rwy 18 and 36	MIRL Rwy 18-36
FAF to MAP 3.7 NM	
Knots	60 90 120 150 180
Min:Sec	3:42 2:28 1:51 1:29 1:14

CATEGORY	A	B	C	D
S-18	520-1	401 (500-1)	520-1 1/8 401 (500-1 1/8)	NA
CIRCLING	620-1 501 (600-1)	720-1 601 (700-1)	880-2 1/4 761 (800-2 1/4)	NA

SC-4, 11 JUL 2024 to 08 AUG 2024

SC-4, 11 JUL 2024 to 08 AUG 2024