

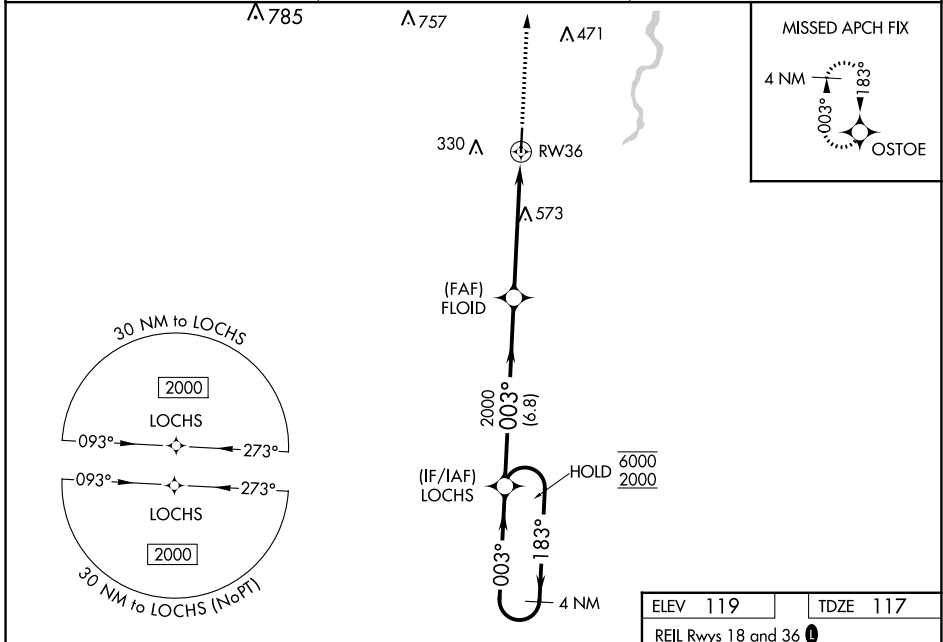
WAAS CH <b>62913</b> <b>W36A</b>	APP CRS <b>003°</b>	Rwy Idg <b>5002</b> TDZE <b>117</b> Apt Elev <b>119</b>
--	------------------------	---

# RNAV (GPS) RWY 36

GEORGE R CARR MEML AIR FLD (BXA)

RNP APCH.	MISSED APPROACH: Climb to 2000 direct OSTOE and hold.
-----------	---

AWOS-3PT <b>118.025</b>	HOUSTON CENTER <b>126.8 327.8</b>	UNICOM <b>122.8 (CTAF) 0</b>
----------------------------	--------------------------------------	---------------------------------



SC-4, 11 JUL 2024 to 08 AUG 2024

SC-4, 11 JUL 2024 to 08 AUG 2024

VGSI and RNAV glidepath not coincident (VGSI Angle 3.00/TCH 52). 4 NM Holding Pattern 6000 ← 183° 2000 → 003° GP 3.30° TCH 60		2000 OSTOE * LNAV only.		
6.8 NM 3.1 NM 2.1 NM		* 2.1 NM to RWY36		
CATEGORY	A	B	C	D
LPV DA	421-1 304 (400-1)			NA
LNAV/VNAV DA	512-1½ 395 (400-1½)			NA
LNAV MDA	840-1 723 (800-1)		840-2 723 (800-2)	NA
CIRCLING	840-1 721 (800-1)		880-2¼ 761 (800-2¼)	NA

