

WAAS CH 75965 W25B	APP CRS 253°	Rwy Idg TDZE Apt Elev	8000 6540 6547
--	------------------------	-----------------------------	---

RNAV (GPS) Y RWY 25

EAGLE COUNTY RGNL (EGE)

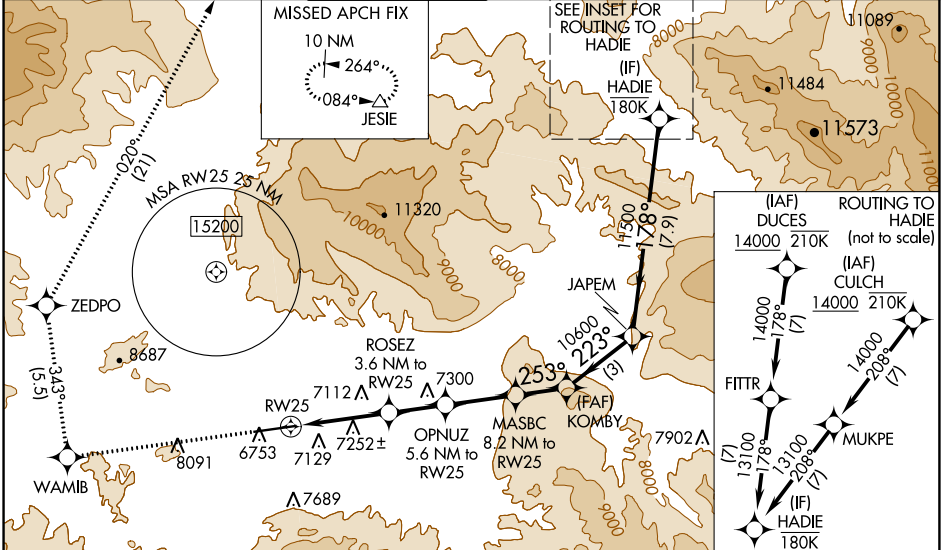
RNP APCH-GPS.

▼ When local altimeter setting not received, procedure NA. Rwy 25 helicopter visibility reduction below 3/4 SM NA. Circling NA south of Rwy 25-7. Circling Rwy 7 NA at night. Inop table does not apply to LP and LNAV Cat C. For inop ALS, increase LP (*) Cat A visibility to 1 SM and Cat C visibility to 2 1/2 SM.

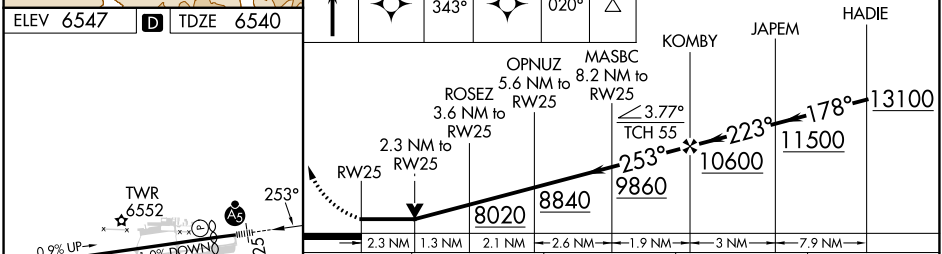
MALS R

MISSED APPROACH: (Do not exceed 165K until ZEDPO) Climb to 15000 on the RNAV missed approach route to JESIE and hold, continue climb in-hold to 15000. *Missed approach requires minimum climb of 318 feet per NM to 8700. #Missed approach requires minimum climb of 288 feet per NM to 8900.

ATIS 135.575	DENVER CENTER 128.65 282.2	EAGLE TOWER * 119.8 (CTAF) 0	GND CON 121.8	CLNC DEL 124.75	DENVER CLNC DEL 124.75 (When tower closed)
------------------------	--------------------------------------	---	-------------------------	---------------------------	---



ELEV 6547	D	TDZE 6540	↑	WAMIB	tr 343°	ZEDPO	tr 020°	JESIE	△	VGSI and descent angles not coincident (VGSI Angle 3.00/TCH 55).		
-----------	----------	-----------	---	-------	---------	-------	---------	-------	---	--	--	--



	CATEGORY	A	B	C	D
LP	MDA*	7320-3/4	780 (800-3/4)	7320-1 3/4 780 (800-1 3/4)	NA
LP	MDA	7780-3/4 1240 (1300-3/4)	7800-1 1260 (1300-1)	7820-3 1280 (1300-3)	NA
LNAV	MDA#	7580-3/4 1040 (1100-3/4)	7580-1 1040 (1100-1)	7580-2 1/2 1040 (1100-2 1/2)	NA
LNAV	MDA	7940-3/4 1400 (1400-3/4)	7960-1 1420 (1500-1)	7980-3 1440 (1500-3)	NA
	CIRCLING	7940-1 1/4 1393 (1400-1 1/4)	8020-1 1/2 1473 (1500-1 1/2)	8580-3 2033 (2100-3)	NA

SW-1, 11 JUL 2024 to 08 AUG 2024

SW-1, 11 JUL 2024 to 08 AUG 2024