

APP CRS 255°	Rwy Idg 3111
	TDZE 1771
	Apt Elev 1783

RNAV (GPS) RWY 26

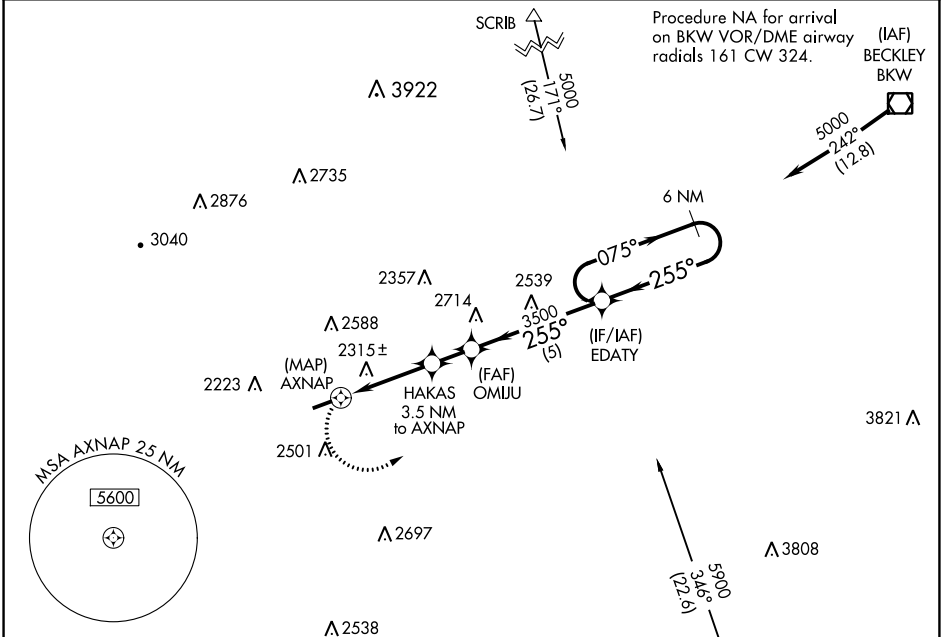
KEE FLD (I16)

RNP APCH - GPS.

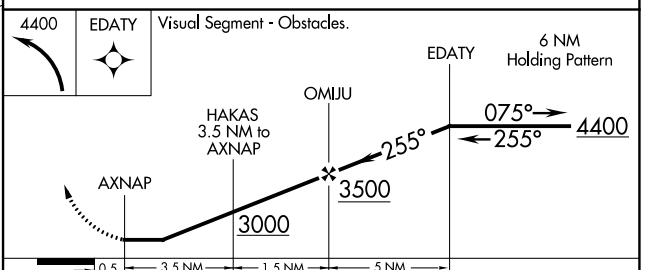
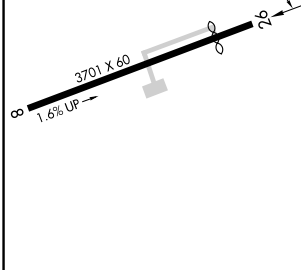
▼ Rwy 26 helicopter visibility reduction below 1 SM NA.
▲ NA Procedure NA at night.

MISSED APPROACH: Climbing left turn to 4400 direct EDATY and hold.

AWOS-3 120.625	CHARLESTON APP CON 125.4 269.125	UNICOM 122.8 (CTAF)
--------------------------	--	-------------------------------



ELEV 1783	TDZE 1771
-----------	-----------



MIRL Rwy 8-26	REIL Rwy 8 and 26
---------------	-------------------

CATEGORY	A	B	C	D
LNAV MDA	2580-1 809 (800-1)	2580-1¼ 809 (800-1¼)	2580-2½ 809 (800-2½)	NA

NE-4, 11 JUL 2024 to 08 AUG 2024

NE-4, 11 JUL 2024 to 08 AUG 2024