

WAAS CH 63232 W28A	APP CRS 279°	Rwy Idg TDZE Apt Elev	5005 1162 1182
--	------------------------	-----------------------------	---

RNAV (GPS) RWY 28

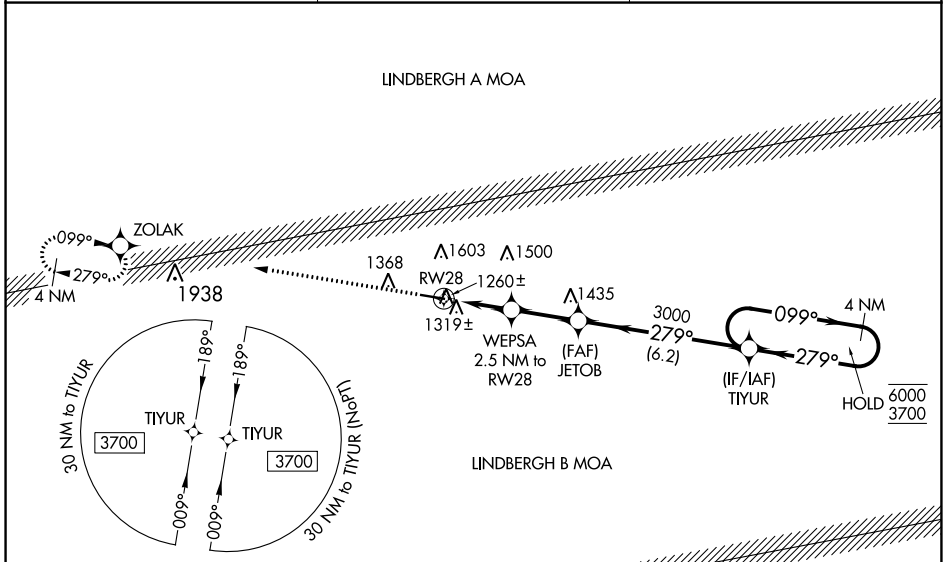
MOUNTAIN VIEW (MNF)

RNP APCH - GPS.

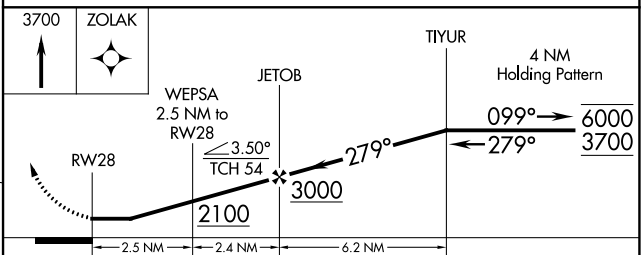
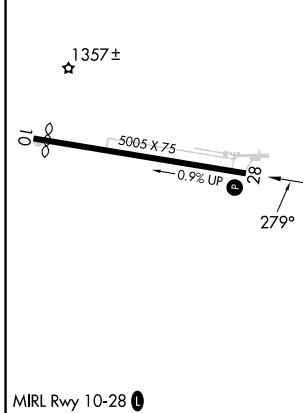
NA Circling Rwy 10 NA at night. Rwy 28 helicopter visibility reduction below 1 SM NA. Use West Plains altimeter setting; when not received, use Fort Leonard Wood altimeter setting and increase all MDA 100 feet; increase LP Cat C/D visibility ¼ SM, LNAV Cat C/D visibility ¼ SM and Circling Cat B/C visibility ¼ SM. Straight-in Rwy 28 at night, Circling Rwy 28 at night, operational VGSI required, remain on or above VGSI glidepath until threshold.

MISSED APPROACH: Climb to 3700 direct ZOLAK and hold.

UNO ASOS 123.825	KANSAS CITY CENTER 128.35 284.675	UNICOM 122.8 (CTAF)
----------------------------	---	-------------------------------



ELEV 1182	TDZE 1162
-----------	-----------



CATEGORY	A	B	C	D
LP MDA	1560-1	398 (400-1)	1560-1½	398 (400-1½)
LNAV MDA	1620-1	458 (500-1)	1620-1¾	458 (500-1¾)
CIRCLING	1880-1 698 (700-1)	2080-1¼ 898 (900-1¼)	2080-2¾ 898 (900-2¾)	2180-3 998 (1000-3)

NC-3, 11 JUL 2024 to 08 AUG 2024

NC-3, 11 JUL 2024 to 08 AUG 2024