

WAAS CH 72802 W26A	APP CRS 259°	Rwy Idg TDZE Apt Elev 5252 2519 2558
--	------------------------	--

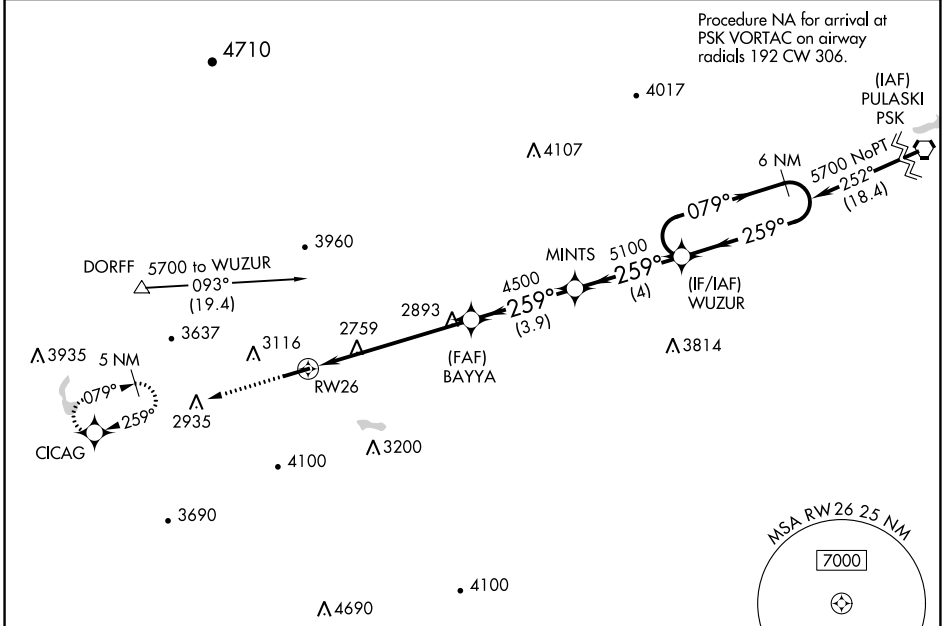
RNAV (GPS) RWY 26

MOUNTAIN EMPIRE (MKJ)

⚠ For uncompensated Baro-VNAV systems, LNAV/VNAV NA below -20°C (-4°F) or above 54°C (130°F). Circling NA north of Rwy 8-26. Rwy 26 helicopter visibility reduction below 3/4 SM NA. DME/DME RNP-0.3 NA.

MISSED APPROACH: Climb to 6200 direct CICAG and hold, continue climb-in-hold to 6200.

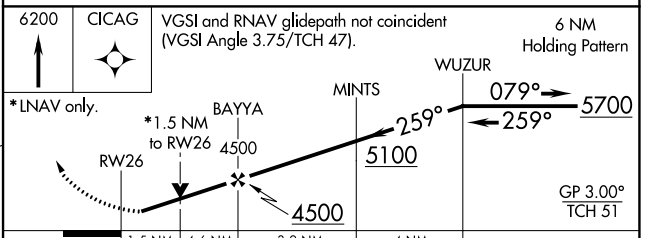
AWOS-3 123.875	ATLANTA CENTER 127.85 269.3	UNICOM 122.7 (CTAF) 0
--------------------------	---------------------------------------	---------------------------------



NE-3, 11 JUL 2024 to 08 AUG 2024

NE-3, 11 JUL 2024 to 08 AUG 2024

ELEV 2558	TDZE 2519
-----------	-----------



CATEGORY	A	B	C	D
LPV DA	3096-2		577 (600-2)	NA
LNAV/VNAV DA	3159-2½		640 (700-2½)	NA
LNAV MDA	3140-1	621 (600-1)	3140-1¾ 621 (600-1¾)	NA
C CIRCLING	3260-1	702 (800-1)	4440-3 1882 (1900-3)	NA

REIL Rws 8 and 26
MIRL Rwy 8-26 0