

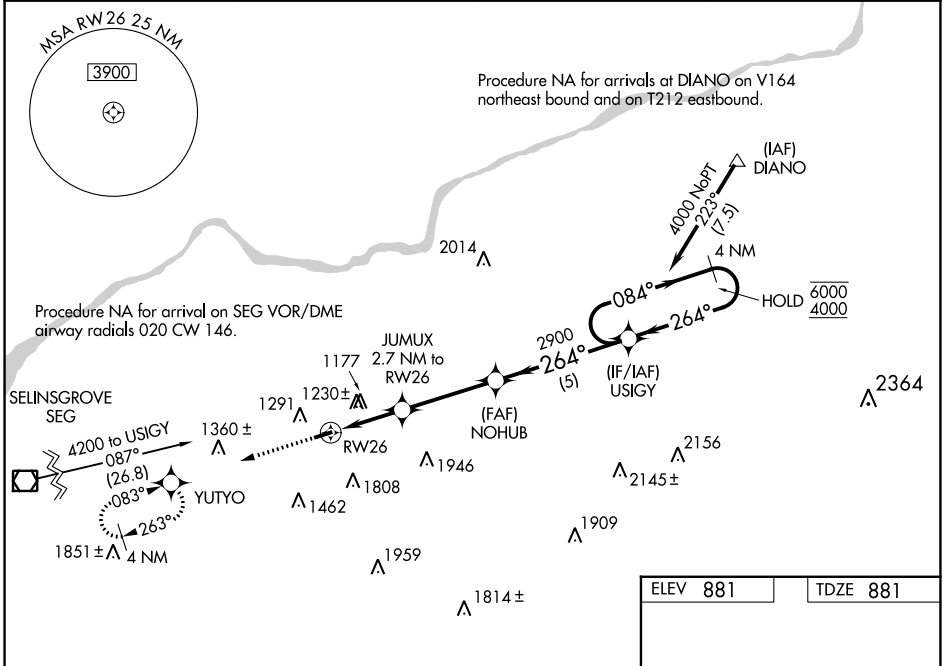
WAAS CH 50424 W26A	APP CRS 264°	Rwy Idg TDZE Apt Elev	3297 881 881
--	------------------------	-----------------------------	---

RNAV (GPS) RWY 26

NORTHUMBERLAND COUNTY (N79)

RNP APCH - GPS.	<p>Baro-VNAV and VDP NA when using Selinsgrove altimeter setting. Rwy 26 helicopter visibility reduction below $\frac{3}{4}$ SM NA. For uncompensated Baro-VNAV systems, LNAV/VNAV NA below -16°C or above 54°C. When local altimeter setting not received, use Selinsgrove altimeter setting and increase LPV DA to 1529 feet and all visibilities $\frac{1}{4}$ SM. Increase LNAV/VNAV DA to 1651 feet and all visibilities $\frac{5}{8}$ SM. Increase all MDAs 100 feet and LNAV visibility Cat C $\frac{1}{4}$ SM.</p>	<p>MISSED APPROACH: Climb to 3400 direct YUTYO and hold, continue climb-in-hold to 3400.</p>
-----------------	--	--

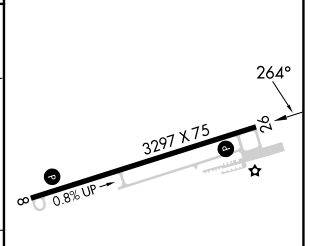
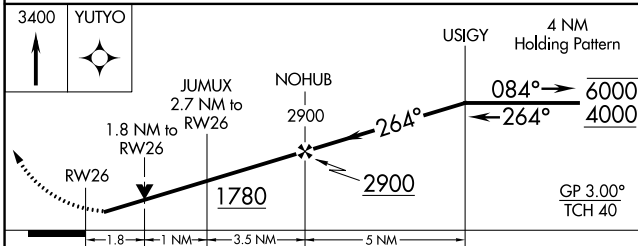
AWOS-3 119.175	HARRISBURG APP CON 118.25 269.45	UNICOM 122.8 (CTAF)	121.8
--------------------------	--	-------------------------------	--------------



NE-4, 11 JUL 2024 to 08 AUG 2024

NE-4, 11 JUL 2024 to 08 AUG 2024

ELEV 881	TDZE 881
----------	----------



CATEGORY	A	B	C	D
LPV DA	1437-1 $\frac{5}{8}$	556 (600-1 $\frac{5}{8}$)		NA
LNAV/VNAV DA	1559-1 $\frac{7}{8}$	678 (700-1 $\frac{7}{8}$)		NA
LNAV MDA	1480-1 599 (600-1)	1480-1 $\frac{1}{4}$ 599 (600-1 $\frac{3}{4}$)		NA
CIRCLING	1820-1 $\frac{1}{4}$ 939 (1000-1 $\frac{1}{4}$)	1880-1 $\frac{1}{2}$ 999 (1000-1 $\frac{1}{2}$)	2120-3 1239 (1300-3)	NA

MIRL Rwy 8-26

REIL Rws 8 and 26