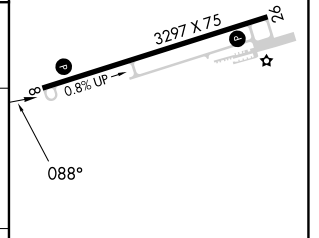
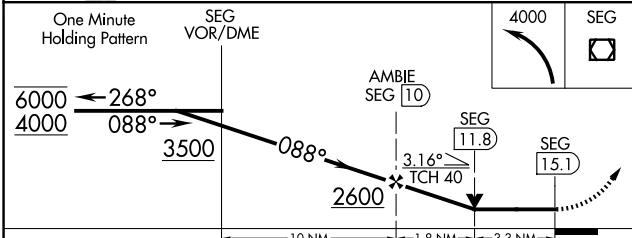
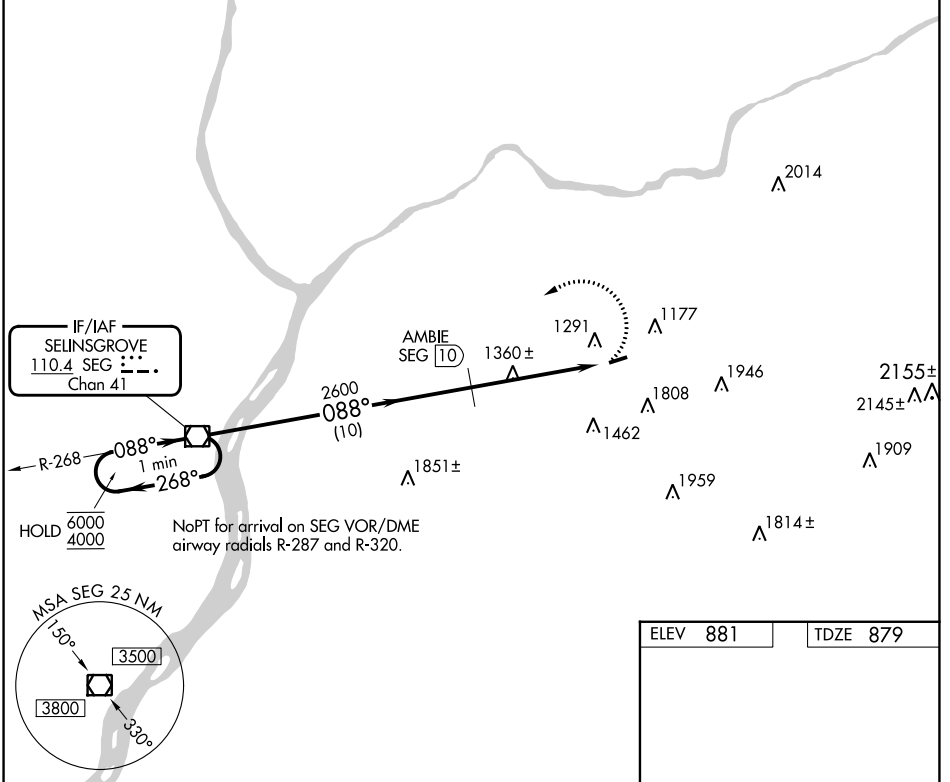


VOR/DME SEG 110.4 Chan 41	APP CRS 088°	Rwy Idg TDZE 3297 879 Apt Elev 881
---	------------------------	---

VOR RWY 8
NORTHUMBERLAND COUNTY (N79)

DME required.	MISSED APPROACH: Climbing left turn to 4000 direct SEG VOR/DME and hold.
▽ Rwy 8 helicopter visibility reduction below ¼ SM NA. ▲ NA When local altimeter setting not received, use Selingsgrove altimeter setting and increase all MDAs 100 feet.	

AWOS-3 119.175	HARRISBURG APP CON 118.25 269.45	UNICOM 122.8 (CTAF)	121.8 0
--------------------------	--	-------------------------------	----------------



CATEGORY	A	B	C	D
S-8	1960-1¼ 1081 (1100-1¼)	1960-1½ 1081 (1100-1½)	1960-3 1081 (1100-3)	NA
CIRCLING	1960-1¼ 1079 (1100-1¼)	1960-1½ 1079 (1100-1½)	2120-3 1239 (1300-3)	NA

MIRL Rwy 8-26 0	
REIL Rws 8 and 26	
FAF to MAP 5.1 NM	
Knots	60 90 120 150 180
Min:Sec	5:06 3:24 2:33 2:02 1:42

NE-4, 11 JUL 2024 to 08 AUG 2024

NE-4, 11 JUL 2024 to 08 AUG 2024