

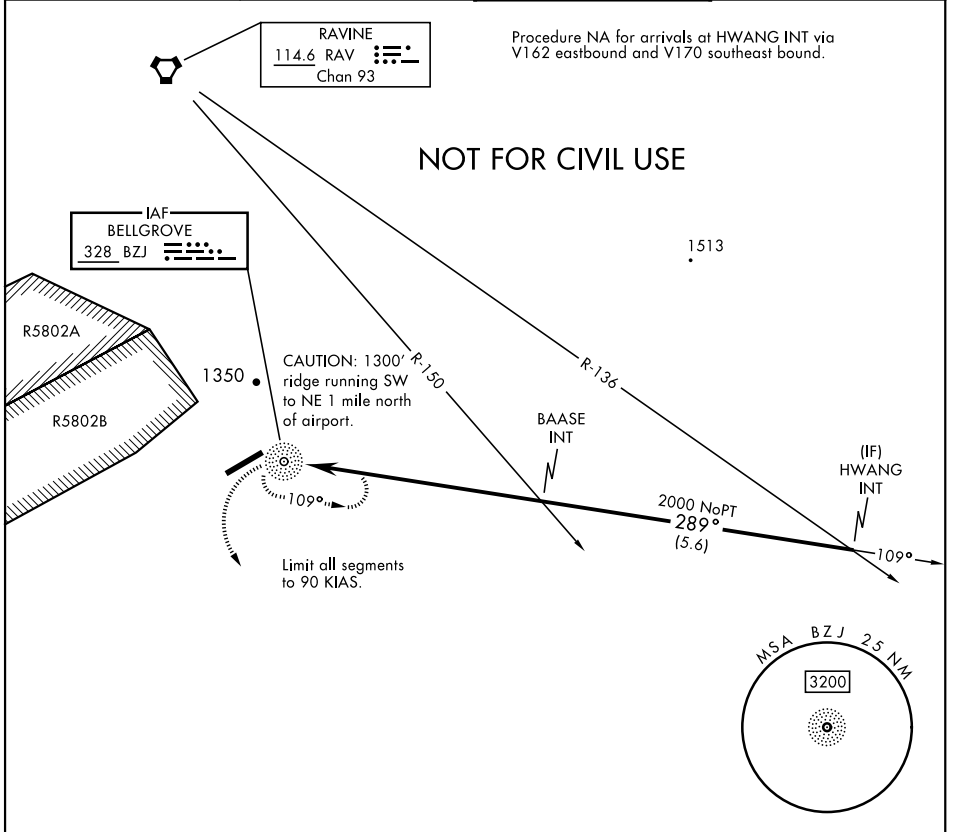
COPTER NDB Z-289°

| | | | | |
|-----------------------|-------------------------|--|---------------|-----------------|
| NDB BZJ 328 | APCH CRS 289° | Rwy ldg TDZE Arprt Elev N/A N/A 487 | AL-6422 [USA] | MUIR AHP (KMUI) |
|-----------------------|-------------------------|--|---------------|-----------------|

▼ VOR receiver required for this approach.
When local altimeter setting not received, use Harrisburg Intl altimeter and increase MDA by 80 ft, vis by ¼ mile, and ceiling by 100 ft.

MISSED APPROACH: Climb to 2000 via hdg 160° then climbing left turn to 2900 direct BZJ NDB and hold. Continue climb in hold.

| | | | |
|------------------------|--|---|-----------------------------------|
| ASOS 124.175 | HARRISBURG APP CON 118.25 269.45 | MUIR TOWER ★ 126.2 (CTAF) 0 290.325 | GND CON 135.675 269.525 |
|------------------------|--|---|-----------------------------------|



NE-4, 11 JUL 2024 to 08 AUG 2024

NE-4, 11 JUL 2024 to 08 AUG 2024

| | | | |
|--|--------|-------------|---|
| 2000 hdg 160° | 2900 | BZJ | ELEV 487 |
| <p>NDB</p> <p>BAASE INT 2000</p> <p>HWANG INT 3000</p> <p>4.7 NM</p> | | | <p>Rwy 7 ldg 3631'</p> <p>Rwy 25 ldg 3860'</p> <p>TWR</p> <p>0.5% UP</p> <p>3981 x 98</p> <p>289°</p> |
| CATEGORY | COPTER | | MIRL Rwy 7-25 |
| H-289° | 1360-1 | 873 (900-1) | REIL all rwys |

COPTER NDB Z-289°