

COPTER RNAV (GPS) RWY 25

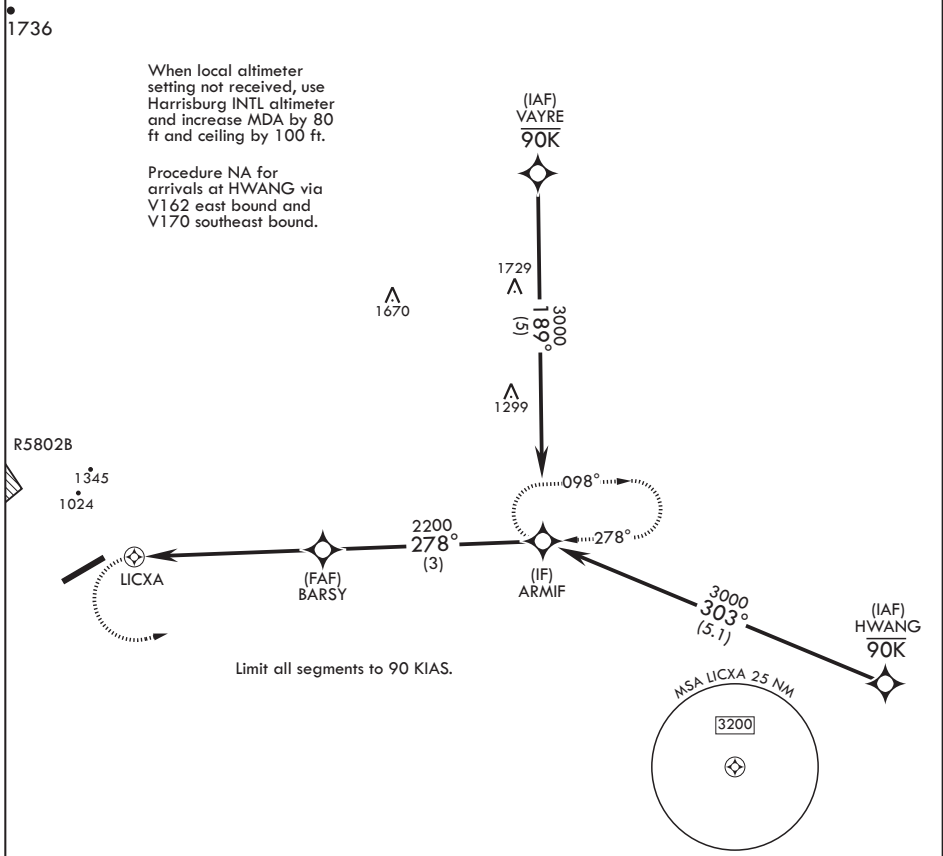
APCH CRS	Rwy Idg	3860
278°	TDZE	487
	Arpt Elev	487

AL-6422 (USA)

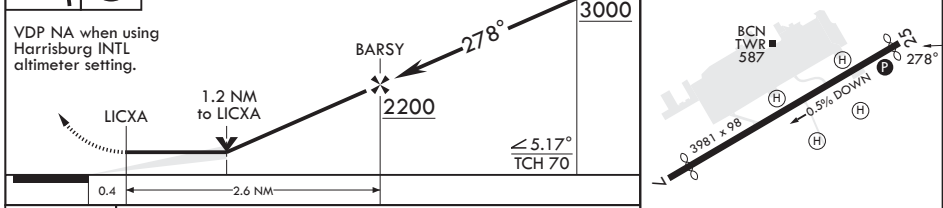
MUIR AHP (KMUI)

RNP APCH - GPS	MISSED APPROACH: Climbing left turn to 3000 direct ARMIF and hold. Continue climb in hold.
----------------	--

ASOS 124.175	HARRISBURG APP CON/DEP CON 118.25 269.45	TOWER * 126.2 (CTAF) 0 290.325	GND CON 135.675 269.525
-----------------	---	-----------------------------------	----------------------------



3000	ARMIF	VGSI and descent angles not coincident.	ARMIF	ELEV 487	TDZE 487
------	-------	---	-------	----------	----------



CATEGORY	COPTER	
LNAV MDA	1460-1¼	973 (1000-1¼)

COPTER RNAV (GPS) RWY 25

NE-4, 11 JUL 2024 to 08 AUG 2024