

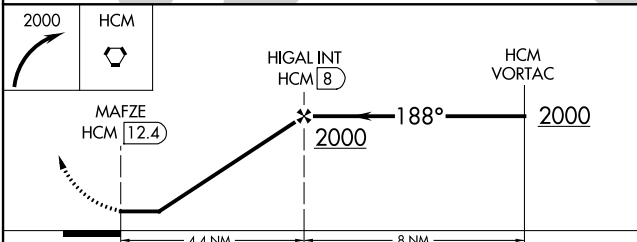
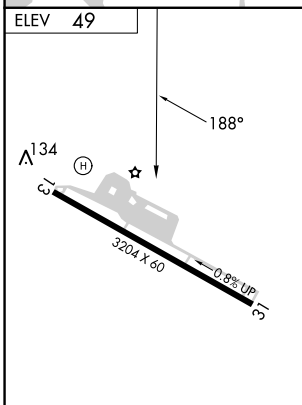
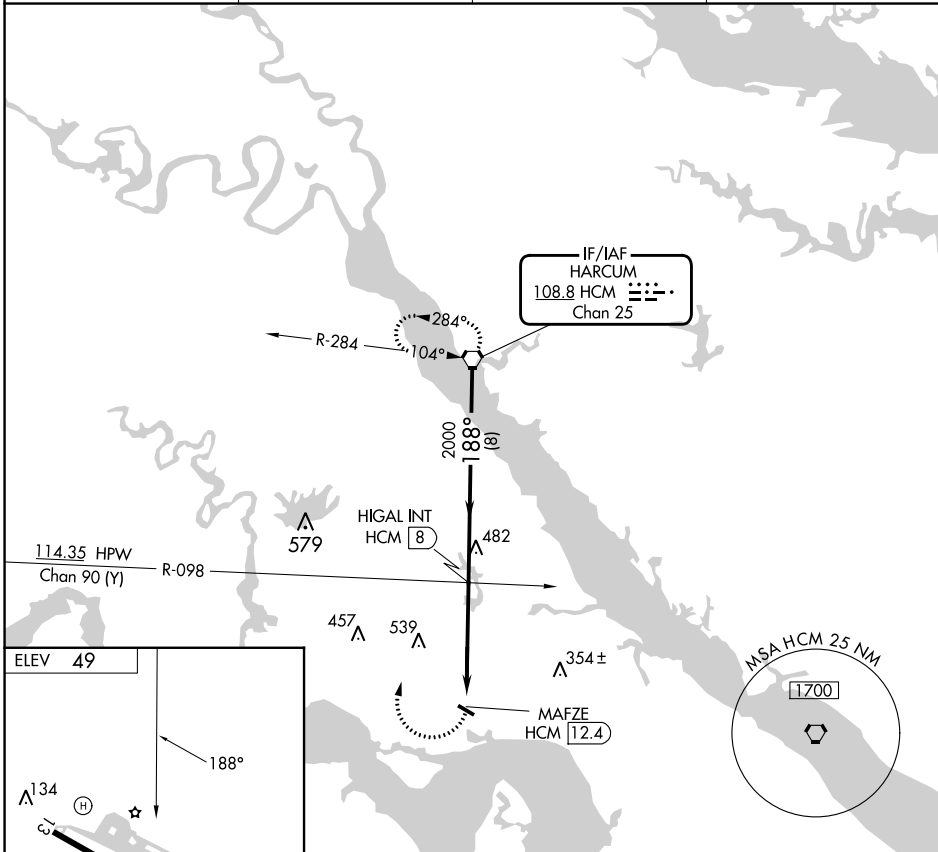
VORTAC HCM 108.8 Chan 25	APP CRS 188°	Rwy Idg TDZE Apt Elev N/A N/A 49
---------------------------------------	------------------------	--

VOR-B

WILLIAMSBURG/JAMESTOWN (JGG)

▽ ▲	Procedure NA at night. Rwy 13, 31 helicopter visibility reduction below 1 SM NA.	MISSED APPROACH: Climbing right turn to 2000 direct HCM VORTAC and hold.
----------------------	---	--

AWOS-3 120.625	NORFOLK APP CON 119.45 360.6	GCO 135.075	UNICOM 122.8 (CTAF) 0
--------------------------	--	-----------------------	---------------------------------



REIL Rwy 13 and 31 MIRL Rwy 13-31
FAF to MAP 4.4 NM
Knots: 60, 90, 120, 150, 180
Min:Sec: 4:24, 2:56, 2:12, 1:46, 1:28

CATEGORY	A	B	C	D
☑ CIRCLING	1060-3	1011 (1100-3)		NA

NE-3, 11 JUL 2024 to 08 AUG 2024

NE-3, 11 JUL 2024 to 08 AUG 2024