

MESQUITE, TEXAS

AL-6444 (FAA)

21112

|  |                        |   |
|--|------------------------|---|
| WAAS<br>CH <b>78401</b><br><b>W36A</b> | APP CRS<br><b>358°</b> | Rwy Idg <b>6000</b><br>TDZE <b>443</b><br>Apt Elev <b>447</b> |
|--|------------------------|---|

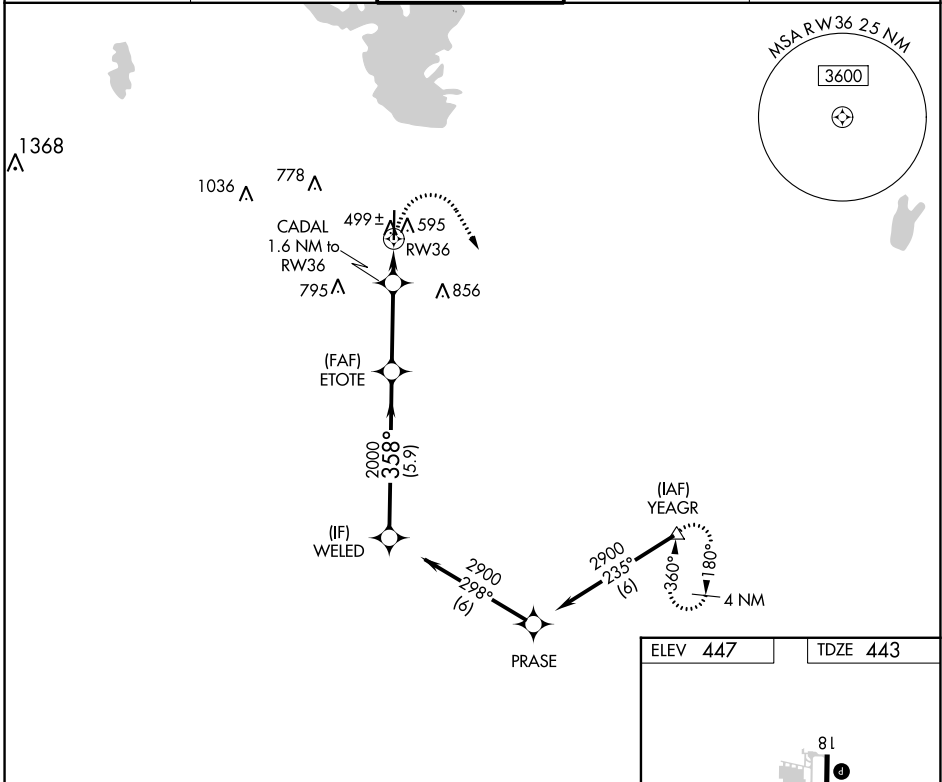
# RNAV (GPS) RWY 36

MESQUITE METRO (HQZ)

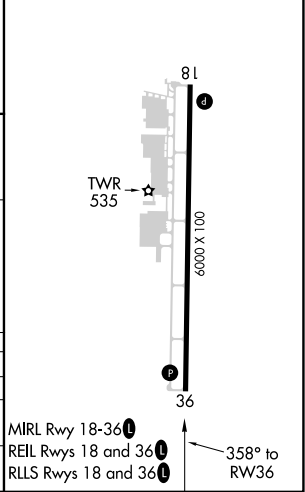
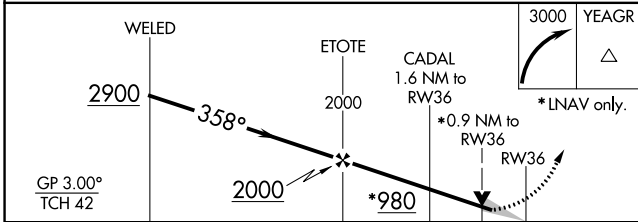
**⚠** DME/DME RNP-0.3 NA. When local altimeter setting not received, use Dallas Love Fld altimeter setting and increase all DA/MDA 60 feet. Increase LPV all Cats visibility to 1 mile, increase Circling Cat C visibility to 2¼ mile. VDP NA when using Dallas Love Fld altimeter setting.

**MISSED APPROACH:**  
Climbing right turn to 3000 direct YEAGR and hold.

|                          |   |   |                          |                         |
|--------------------------|---|---|--------------------------|-------------------------|
| AWOS-3<br><b>118.175</b> | REGIONAL APP CON<br><b>125.2 343.65</b> | MESQUITE TOWER ★<br><b>120.3 (CTAF) 0</b> | GND CON<br><b>118.85</b> | UNICOM<br><b>123.05</b> |
|--------------------------|---|---|--------------------------|-------------------------|



|          |          |
|----------|----------|
| ELEV 447 | TDZE 443 |
|----------|----------|



| CATEGORY          | A       | B             | C                     | D  |
|-------------------|---------|---------------|-----------------------|----|
| LPV DA            | 693-7/8 | 250 (300-7/8) |                       | NA |
| RNAV MDA          | 760-1   | 317 (400-1)   |                       | NA |
| <b>C</b> CIRCLING | 960-1   | 513 (600-1)   | 1160-2<br>713 (800-2) | NA |

MIRL Rwy 18-36 **0**  
REL Rwys 18 and 36 **0**  
RLS Rwys 18 and 36 **0**

SC-2, 11 JUL 2024 to 08 AUG 2024

SC-2, 11 JUL 2024 to 08 AUG 2024

MESQUITE, TEXAS  
Amdt 2 25JUN15

32°45'N-96°32'W

# RNAV (GPS) RWY 36